



A53 & A54 Deck Height Adjusters

Operator's Manual

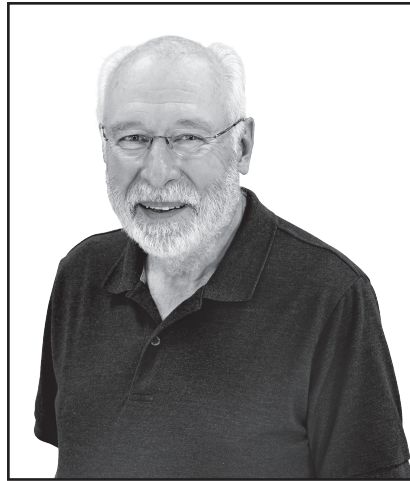
Assembly, Attaching, Removing, Operation, and Maintenance



Please Read and Save These Instructions

For Safety, Read All Assembly and Operation Instructions
Prior to Operating Attachment

Effective Date: 10/01/2024
P/N: 7211-20



Foreword

Thank you. . .for purchasing a Walker Deck Height Adjuster. Every effort has been made to provide you with the most reliable machine on the market, and we are sure you will be among our many satisfied customers. If for any reason this product does not perform to your expectations, please contact your local dealer. Every customer is important to us. Your satisfaction is our goal.

Please. . .read this manual thoroughly! Before you operate your machine, please read this entire manual. Some of the information is crucial for proper operation - it will help protect your investment and ensure that the machine performs to your satisfaction. Some of the information is important to your safety, and must be read and understood to help prevent possible injury to the operator or others. If anything in this manual is confusing or hard to understand, please contact your local authorized dealer or call our service department, at (970) 221-5614, for clarification before operating or servicing this machine.

This manual covers the A53 and A54 Deck Height Adjusters.

All shields and guards must be in place for the proper and safe operation of this machine. Where they are shown removed in this manual, it is for illustration purposes only. **Do not operate this machine unless all shields and guards are in place.**

Walker Mfg. Co. is continually striving to improve the design and performance of its products. We reserve the right to make changes in specifications and design without thereby incurring any obligation relative to previously manufactured products.

Sincerely,

WALKER MANUFACTURING
COMPANY

Bob Walker, Chairman

Table of Contents

General Information _____ 1

Highlighted Information _____ 1

Glossary _____ 1

Servicing the Deck Height Adjuster _____ 1

Unit Description _____ 1

Component Identification _____ 2

Safety Instructions _____ 3

Before Operating _____ 3

Operating _____ 3

Maintenance _____ 3

Assembly and Installation Instructions 4

Operating Instructions _____ 10

Set Cutting Height _____ 10

To Adjust Set Cutting Height _____ 10

Transport Position _____ 11

To Place Deck In Transport Position: _____ 11

To Release From Transport Position: _____ 11

Lockout Arm _____ 11

For Temporary Height Adjustments _____ 11

Lubrication _____ 12

Parts Lists and Diagrams _____ 13

Parts List (A53) _____ 13

Parts Diagram (A53) _____ 14

Parts Diagram (A53) _____ 15

Parts Lists and Diagrams _____ 16

Parts List (A54) _____ 16

Parts Diagram (A54) _____ 17

Parts Diagram (A54) _____ 18

Limited Warranty _____ 20

General Information

HIGHLIGHTED INFORMATION

Walker Manufacturing recommends that any service requiring special training or tools be performed by an authorized Walker Mower Dealer. There are several general practices to be aware of in the area of safety. Most accidents associated with the operation or maintenance of a Walker Tractor are caused by disregarding basic safety precautions or specific warnings. Such accidents, in most cases, can be prevented by being aware of the dangers present.

Information of special importance has been highlighted in bold type in this manual. Refer to Safety Instructions for the meanings of **DANGER**, **WARNING**, **CAUTION**, **IMPORTANT**, and **NOTE**.

GLOSSARY

There are many terms that are either unique to this equipment or that are used as acronyms. The following terms and their definitions will help while using this manual:

- **DECK** is the mowing attachment mounted on the front of the tractor which includes the carrier frame, deck housing, blade spindles, and cutter blades.
- **GRASS HANDLING SYSTEM (GHS®)** collects mowed material and deposits it in the catcher.
- **FORWARD SPEED CONTROL (FSC)** controls the maximum forward speed of the tractor, functioning as a cruise control.
- **LEFT HAND (LH)** refers to the left-hand side of the tractor when the operator is seated facing forward in the tractor seat.
- **MACHINE** consists of the implement installed on the tractor, functioning as a single unit.
- **POWER TAKE-OFF (PTO)** transmits engine power to run the cutter blades and GHS blower.
- **RIGHT HAND (RH)** refers to the right-hand side of the tractor when the operator is seated facing forward in the tractor seat.

- **STEERING LEVERS** steer the tractor by controlling the two transaxles.
- **TRACTOR** is the prime mover, including the engine, drivetrain, operator seat, and controls to operate the mower.

SERVICING THE DECK HEIGHT ADJUSTER

Only routine maintenance and general service instructions are provided in this manual. Any unauthorized work done on the linear actuator during the warranty period may void the warranty. If you have any difficulty finding an authorized outlet or obtaining warranty service, please contact our Service Department for assistance:

Walker Manufacturing Company
5925 E. Harmony Road
Fort Collins, CO 80528
1-970-221-5614
www.walker.com

UNIT DESCRIPTION

The A53 and A54 Deck Height Adjusters are pedal-operated adjusters with gas spring assist. They can be set between 1.5" to 4" at 1/4" intervals for tractors with standard size drive tires.

The A53 Deck Height Adjuster is for 42" decks. It is compatible with the following decks:

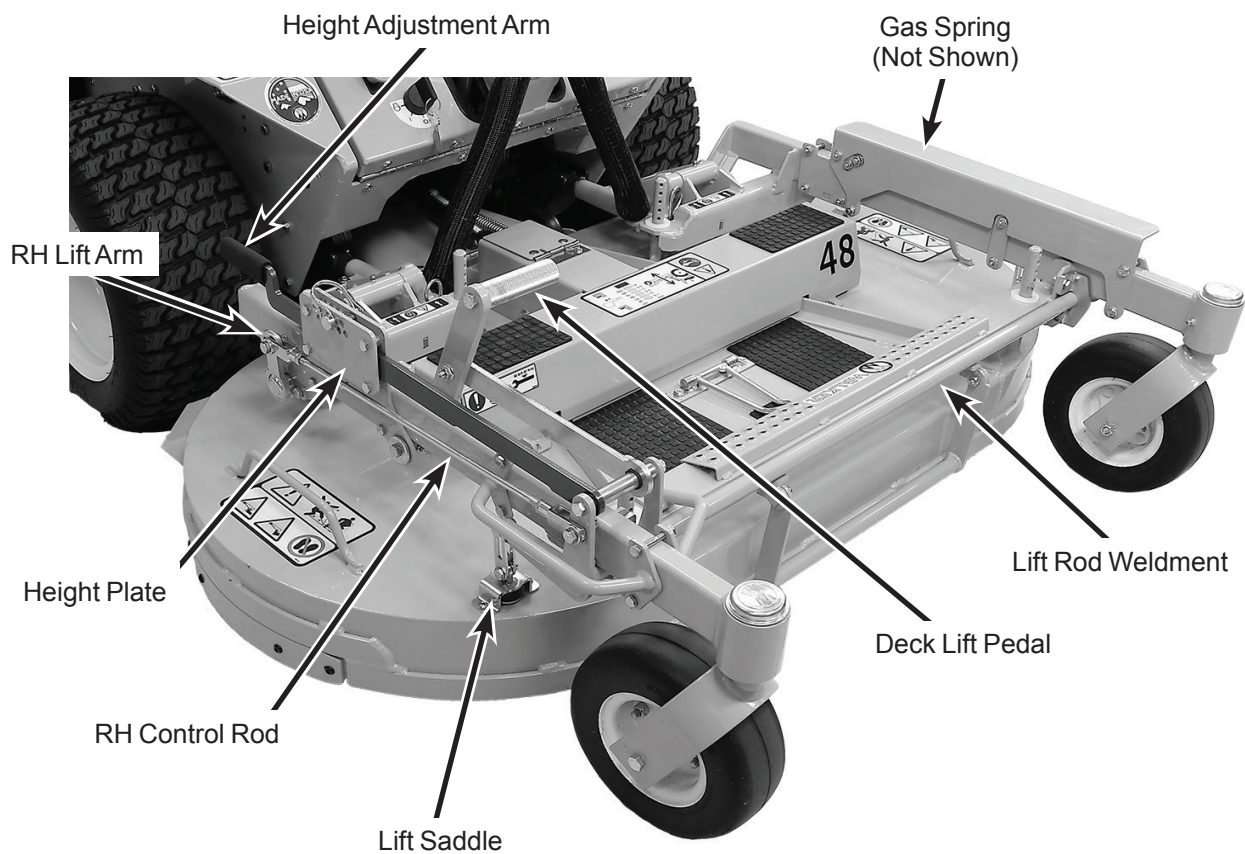
- DC42-2 S/N 221965 and on
- DM42-2 S/N 221965 and on
- DC42R-2 S/N 222489 and on
- DC42RV-2 S/N 222489 and on

The A54 Deck Height Adjuster is for 48" and 52" decks. It is compatible with the following decks:

- DC48-2 S/N 220949 and on
- DM48-2 S/N 220949 and on
- DC48R-2 S/N 220949 and on
- DC48RV-2 S/N 220949 and on
- DC52R-2 S/N 220949 and on
- DC52RV-2 S/N 221042 and on
- DM52-2 S/N 220949 and on

NOTE: MC19, MC19i, MD21d, MT23, and MT27i prior to S/N 2024-188954 are not compatible with the A53 and A54 Deck Height Adjusters.

Component Identification




**A53 and A54 Deck Height Adjusters
(A54 Shown)**

Safety Instructions

Safety Instructions

Pay particular attention to any information labeled **DANGER, WARNING, CAUTION, IMPORTANT**, and **NOTE** in this manual.

When you see the Safety Alert Symbol (), read, understand, and follow the instructions. Failure to comply with safety instructions may result in personal injury.

The seriousness or degree of importance of each type of information is defined as follows:



DANGER

An **IMMEDIATE** hazard that **WILL** result in severe personal injury or **DEATH**, if warning is ignored and proper safety precautions are not taken.



WARNING

A **POTENTIAL** hazard that **COULD** result in severe personal injury or **DEATH**, if warning is ignored and proper safety precautions are not taken.



CAUTION

Possible hazards or unsafe practices that **MAY** result in **MODERATE** personal injury or property damage, or machine damage, if warning is ignored and proper safety precautions are not taken.

IMPORTANT: Identifies mechanical information demanding special attention, since it deals with the possibility of damaging a part or parts of the machine.

NOTE: Identifies information worthy of special attention.

Walker Manufacturing cannot predict every potentially dangerous situation. Therefore, items labeled as such in this manual do not cover all conceivable situations. Any person using procedures, tools, or control techniques not recommended by Walker Manufacturing must take full responsibility for safety.

The Walker Rider Lawnmower has been designed with many safety features to protect the operator from personal harm or injury. However, it is necessary for the operator to use safe operating procedures at all times. **Failure to follow safety instructions contained in this manual may result in personal injury or damage to equipment or property.**

If you have any questions concerning setup, operation, maintenance, or safety, please contact your authorized Walker Mower dealer or call Walker Manufacturing Company at (970) 221-5614.

BEFORE OPERATING

In addition to the safety information provided in the Operator's Manual for the tractor, follow these additional A53 and A54 Deck Height Adjuster safety guidelines:

1. Always make sure the Deck Height Adjuster is properly installed with all guards in place prior to use.
2. Review the Operating Instructions section of this manual to become familiar with the features and proper usage of the Deck Height Adjuster.

OPERATING

In addition to the safety information provided in the Operator's Manual for operating the tractor, follow these additional A53 and A54 Deck Height Adjuster safety guidelines:

1. When operating the A53 or A54 Deck Height Adjuster, the operator should be in the seated in correct operator position.
2. Never adjust the Set Cutting Height while the mower is moving. Before adjusting the Set Cutting Height, move the Forward Speed Control (FSC) into the NEUTRAL-PARK position, engage the parking brake, and disengage the blade clutch (PTO).

MAINTENANCE

Follow the safety information provided in the Operator's Manual for servicing and maintaining the tractor.

Assembly and Installation Instructions

This section covers the assembly and installation of the A53 and A54 Deck Height Adjusters.

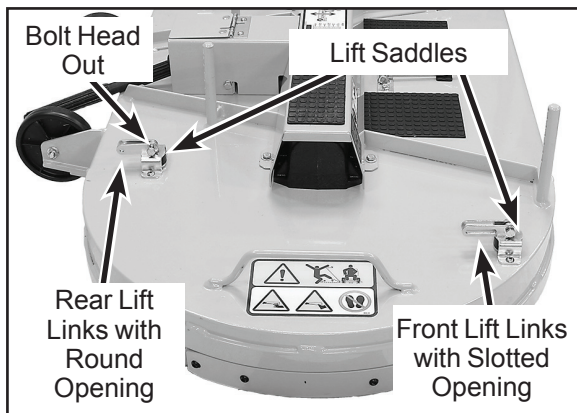
1. Remove the deck from the tractor.
2. Remove the carrier frame from deck housing by removing the hitch pins from the deck height pins and lifting the carrier frame off the deck housing.
3. Drill out the eight (8) pilot mount holes on the deck housing to 1/4" and deburr the holes.

NOTE: For DC48 decks, there are only four (4) front mount holes to drill out. The rear mount holes are capped with four (4) factory installed hex bolts that need to be removed.

4. Install the Lift Saddles and Lift Links. See the deck specific instructions.

For 48" Decks and DC52" Decks: There are four (4) Lift Saddles (#5, P/N 7211-9) that come installed with either slotted Front Lift Links (#19) or round Rear Lift Links (#20). The heads of the bolts that secure the Lift Links to the Lift Saddle need to face out. Install the Lift Saddles on the housing using eight (8) 1/4-20 x 1/2 button head bolts (F717) and 1/4-20 flange top lock nuts (F569). Fully tighten.

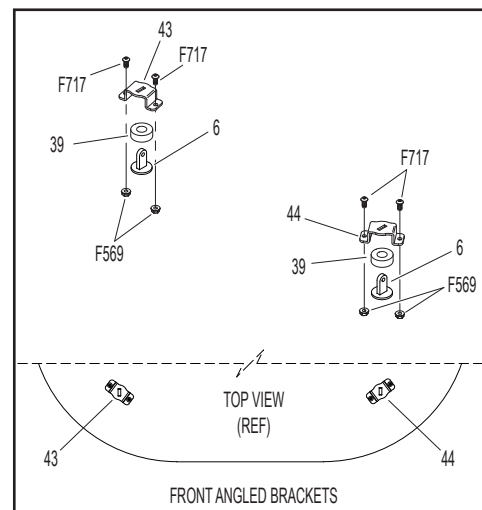
NOTE: For DC48 decks, the rear bolts are secured by a threaded insert in the deck.



Lift Saddles Installed (DM48 Shown)

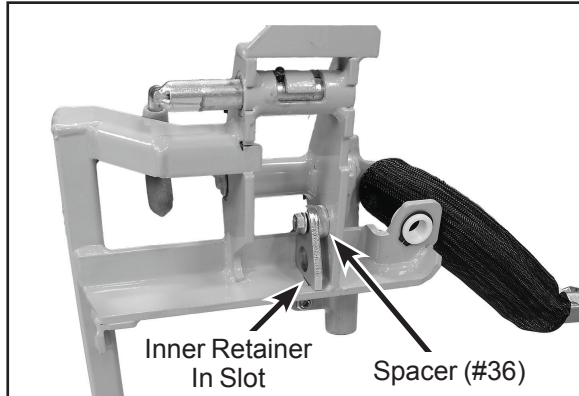
For 42" Decks and DM52" decks: The kit includes a RH Lift Saddle (P/N 7211-18) and the LH Lift Saddle (P/N 7211-19) with slotted Front Lift Links (#19) and two (2) Lift Saddles (#5, P/N 7211-9) round Rear Lift Links (#20). The heads of the bolts that secure the Lift Links to the Lift Saddle need to face out. Install the Lift Saddles on the housing using eight (8) 1/4-20 x 1/2 button head bolts (F717) and 1/4-20 flange top lock nuts (F569). Fully tighten.

NOTE: For the DM52, the front Lift Saddles will need to be replaced with the RH Lift Saddle (P/N 7211-18) and the LH Lift Saddle (P/N 7211-19) to provide a correct mounting angle. Transfer the Lift Links from the standard Lift Saddles before installing them.



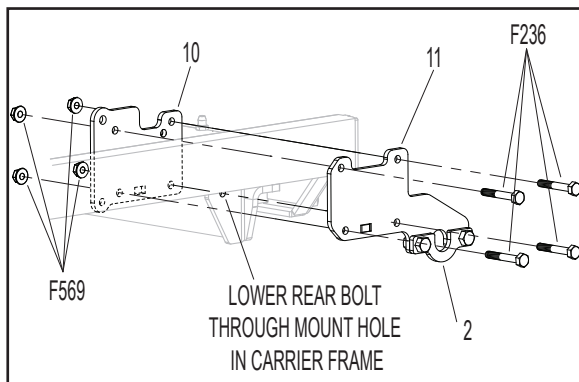
Angled Lift Saddles (DM52 Shown)

5. On the LH side of the carrier frame, install finger tight the Inner Retainer (#35, P/N 7211-14) with a 1.0 x 5/16 x 5/16 Spacer (#36, P/N 6325-14) using a 5/16-18 x 1-1/8 hex bolt (F645) and a 5/16-18 flange top lock nut (F551). Do not fully tighten.



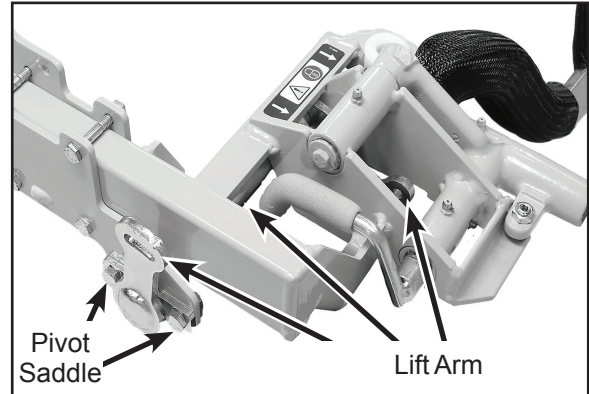
Inner Retainer Installed (LH Shown from Under the Carrier Frame)

6. Install the LH Inner Pivot Plate (#10, P/N 7211-11) and LH Pivot Plate (#11, P/N 7211-7) using four (4) 1/4-20 x 1-3/4 hex bolts (F236) and 1/4-20 flange top lock nuts (F569). The lower rear bolt must go through the mounting hole in the carrier frame. Tighten the bolts evenly to keep the plates parallel. Fully tighten.



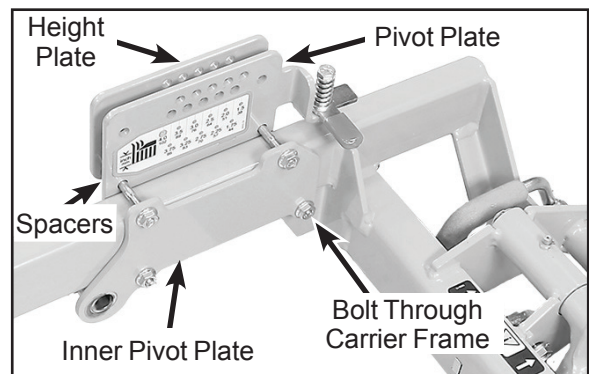
LH Pivot Plates Installed

7. Remove the rear bolt securing the Pivot Saddle (#2, P/N 7211-8) and allow the saddle to swing down. Install the LH Lift Arm (#4, A53: P/N 7210-3, A54: P/N 7211-3) in the Inner Retainer and secure it with the Pivot Saddle. Fully tighten the Inner Retainer and the Pivot Saddle.



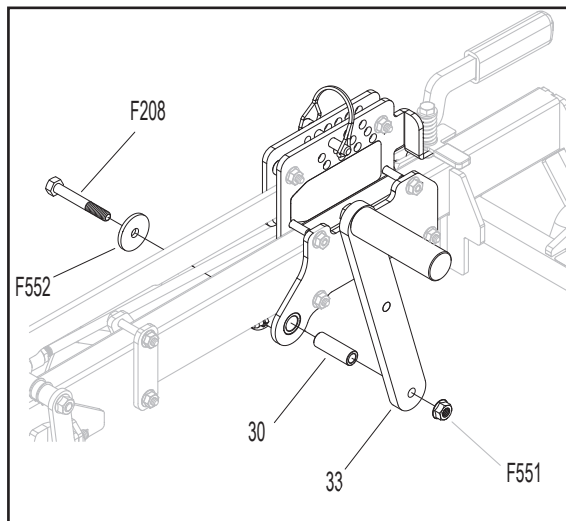
LH Lift Arm Installed

8. On the RH side, install the Inner Retainer (#35) finger tight.
9. Install the RH Inner Pivot Plate (#7, P/N 7211-6) and the RH Pivot Plate (#8, P/N 7211-10) through the **bottom holes** with two (2) 1/4-20 x 1-3/4 hex bolts (F236) and 1/4-20 flange top lock nuts (F569). Like the LH side, the rear bolt must go through the mounting hole on the carrier frame.
10. Install finger tight the Height Plate (#9, P/N 7211-42) to the pivot plates using two (2) 1/4-20 x 2-1/4 hex bolts (F271) and 1/4-20 flange top lock nuts (F569). The bolts will go through the **bottom holes** on the Height Plate, the **middle holes** on the RH Pivot Plate (#8), and the **top holes** on the RH Inner Pivot Plate (#7). Spacers (.5 x .250 x .438) (#24, P/N 6325-11) are required between the Height Plate and RH Pivot Plate.



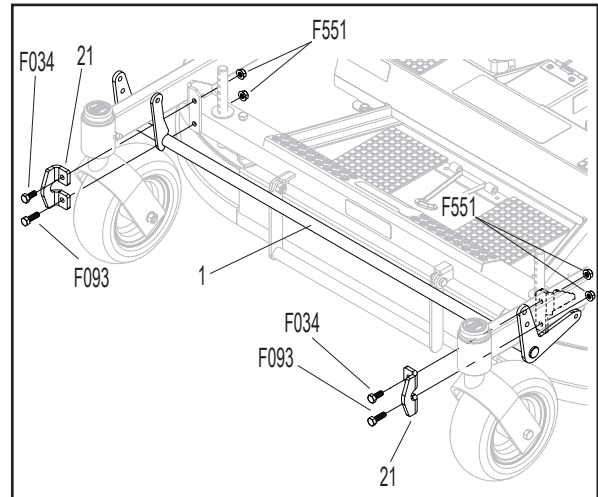
RH Pivot Plates and Height Plate Installed

11. Remove the rear bolt securing the Pivot Saddle (#2, P/N 7211-8) to the RH Pivot Plate, and allow the saddle to swing down. Install the Lift Arm, RH (#3, A53: P/N 7210-2, A54: P/N 7211-2) in the Inner Retainer and secure it with the Pivot Saddle. Fully tighten the Inner Retainer and the Pivot Saddle.
12. Install Foot Pedal Arm (#33, P/N 7211-16) on the RH Pivot Plate (#8) with the Pivot Bushing (1/2 x 5/16 x 1.468) (#30, P/N 7211-13). Secure the arm with a 5/16-18 x 2-1/4 hex bolt (F208), a 1.250 x .314 x .125 washer (F552) and a 5/16-18 flange top lock nut (F551). Fully tighten. Lubricate the bushing using the grease zerk on the front of the RH Pivot Plate.



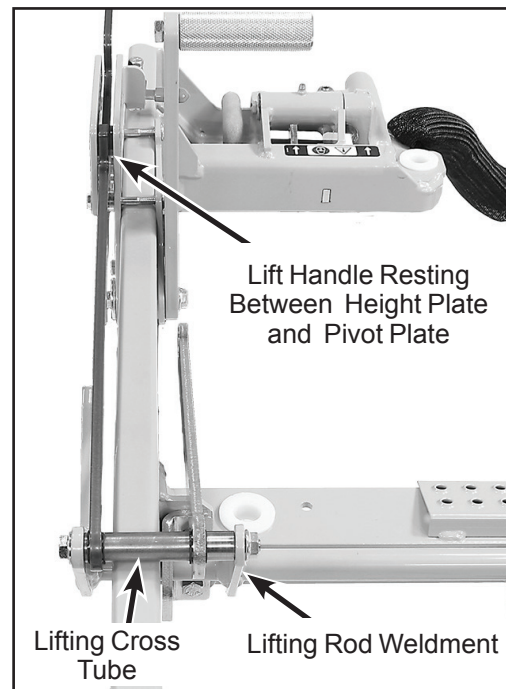
Install Foot Pedal Arm

13. Install the Lift Rod Weldment (#1, A53: P/N 7210-1, A54: P/N 7211-1) along the front of the carrier frame using two (2) Lift Rod Brackets (#21, P/N 7210-10) with a 5/16-18 x 3/4 hex bolt (F034) in the top hole and a 5/16-18 x 1 hex bolt (F093) in the bottom hole along with two (2) 5/16-18 flange top lock nuts (F551). Fully tighten.



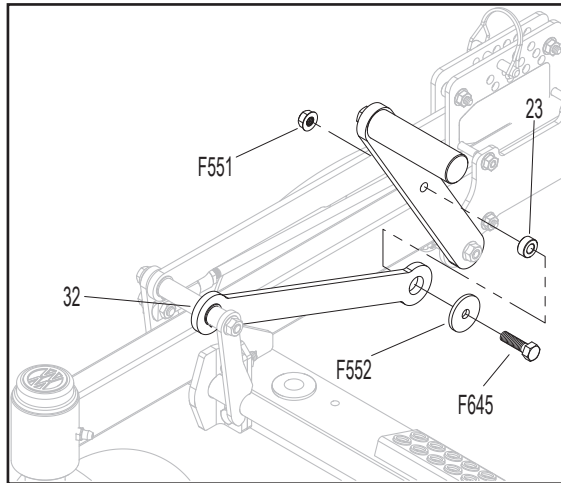
Install Lift Rod Weldment

14. Install the Lifting Cross Tube assembly on the Lift Rod Weldment using a 5/16-18 x 4 hex bolt (F716) and a 5/16-18 flange top lock nut (F551). Fully tighten.



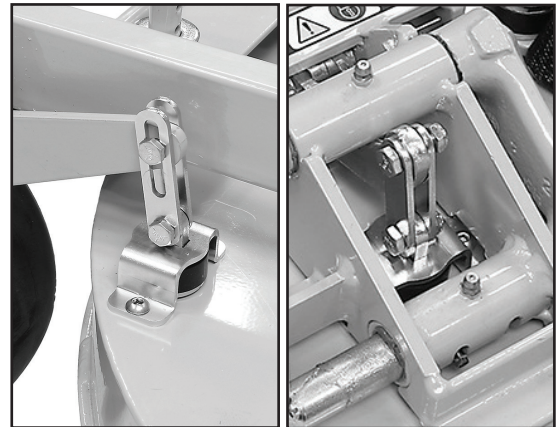
Lifting Cross Tube Installed

15. Attach the Foot Pedal Link (#32) to the Foot Pedal Arm (#33) using 5/16-18 x 1-1/8 hex bolt (F645), 1.250 x .314 x .125 washer (F552), 5/8 x 5/16 x .280 spacer bushing (#23, P/N 6325-9), and a 5/16-18 flange top lock nuts (F551). Fully tighten.



Attach Foot Pedal Arm to Foot Pedal Link

16. With the Height Adjustment Arm (#13) resting between the Height Plate and RH Pivot Plate, install the two (2) 1/4-20 x 1 hex bolts (F179) and 1/4-20 flange top lock nuts (F569) in the top holes with spacers (.5 x .250 x .438) (#24, P/N 6325-11) between the plates. Fully tighten remaining hardware on the height plate and the RH pivot plates.
 17. Install the carrier frame on the deck housing. Block up the deck housing. Using the deck height pins and hitch pins, set the deck height to 3" with the washers and shims installed.
- NOTE:** The deck housing will still be resting on blocks instead of the deck height pins at this point.
18. Connect the four (4) sets of Lift Links to the carrier frame using four (4) 1/4-20 x 13/16 hex bolts (F705) and 1/4-20 LP nylock nuts (F350). The Front Lift Links connect to the Lift Rod Weldment (#1), and the Rear Lift Links (#20) connect to the RH and LH Lift Arms (#3 and #4). Tighten until snug; **don't over tighten**. The links must move freely through the full range of motion.

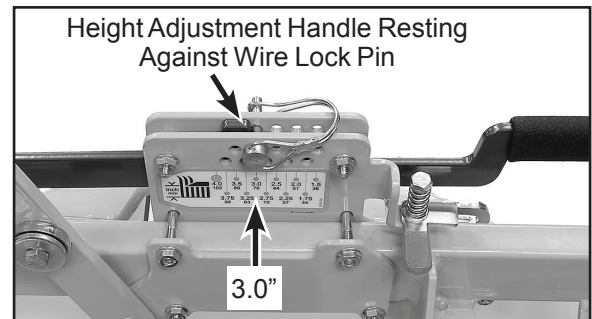


Front

Rear

Lift Links Secured (LH Shown)

19. Unblock the deck housing allowing it to rest on the deck height pins and hitch pins.
20. Install the deck on a tractor.
21. Set the height on the deck height adjuster to 3" using the Wire Lock Pin (#38, P/N 7775-3). Make sure the Height Adjustment handle is resting against the Wire Lock Pin.



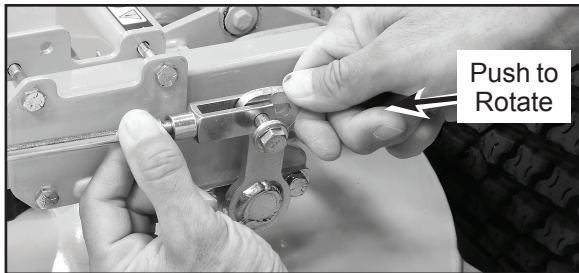
Deck Height Adjuster Set to 3"

22. On the LH side, install the Control Rod (#27, P/N 5213-9) through the lower hole on the Lift Rod Weldment (#1) and the slot on the Lift Arm (#3 and #4) using a 5/16-18 x 1-1/16" hex bolt (F706), a .745 x .320 x .125 washer (F603) and a 5/16-18 ESNA LP nut (F288). Keep finger tight.



Install LH Control Rod

23. Adjust the length of the LH Control Rod so the rear F706 mount bolt goes through the front of the slot on the LH Lift Arm. Rotate the control arm forward to remove any slack during this step; there should be no slop between the F706 and the front of the slot. Once the length of the rod is determined, twist the rear clevis fork **one time** to shorten the rod. The bolt should no longer reach the slot. Lift the deck housing to slide the F706 mount bolt into the slot, and secure the bolt. Fully tighten the front and rear F288 nuts, but do not over tighten.



Set Control Rod Length

24. Measure the length of the LH Control Rod, and set the RH Control Rod to the same length as a starting point. Repeat the procedure to install the rod.

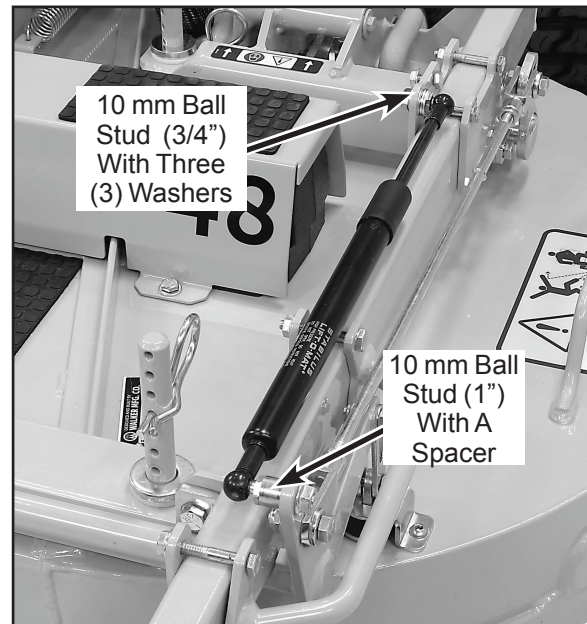
NOTE: While the rods will likely not end up the exact same length, they should be close. Manufacturing tolerances will cause them to vary slightly.

25. Carefully raise the deck using the deck lift pedal to the highest setting and remove the hitch pins, the spacer and the washer from the deck height pins.

NOTE: The deck will be more difficult to lift without the gas spring installed.

26. Carefully lower the deck checking to make sure the deck is level using the deck height pins as a guide. They should all be within a 1/8" of each other with the same number of holes showing above the carrier frame. Raise the deck, and make sure the height still matches the holes on the deck height pins. If the deck pins are not within 1/8", repeat step 23 and 24.

27. Mount the 10 mm Ball Stud, 5/16-18 x 3/4 (#18, P/N 5155-13) on the LH Inner Pivot Plate (#10) with three (3) 5/16 SAE washers (F049) and secure with a 5/16-18 flange top lock nut (F551). Mount the 10 mm Ball Stud, 5/16-18 x 1 (#34, P/N 5146-2) on the Lift Rod Weldment (#1) with the spacer (#45, P/N 2720-3) another F551 top lock nut. Install the gas spring on the ball studs and secure it with the clips.



Gas Spring Installed

28. Raise and lower the deck to check the deck levelness. Height can only be adjusted front to rear on each side respectively. Starting with the right side, use the deck height pins as a guide. They should all be within a 1/8" of each other with the same number of holes showing above the carrier frame.

Adjust the right Control Rod (#27) as needed.

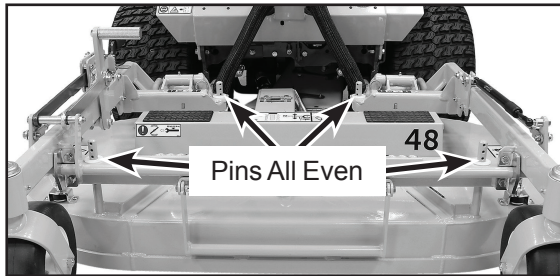
* Shorten the rod to lift the rear.

* Lengthen the rod to lower the rear.

Repeat this process for the left Control Rod.

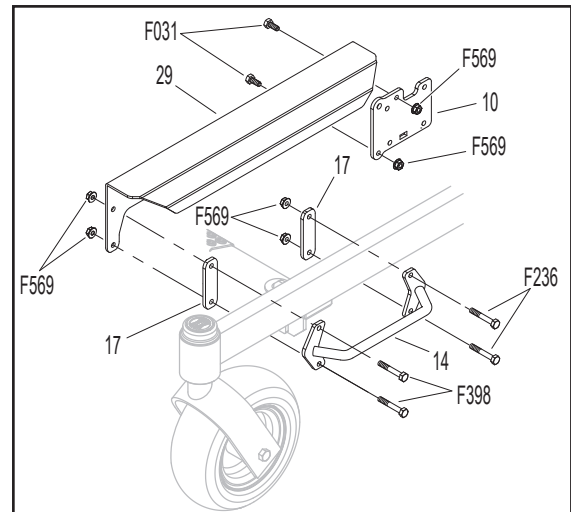
NOTE: Both sides should be under a similar tension. If one side appears to require excessive adjustment, loosen both sides and start the adjustment again.

NOTE: Variations in tire pressure, tire size, floor levelness, etc. can cause the deck to not appear level.



Check Deck Levelness

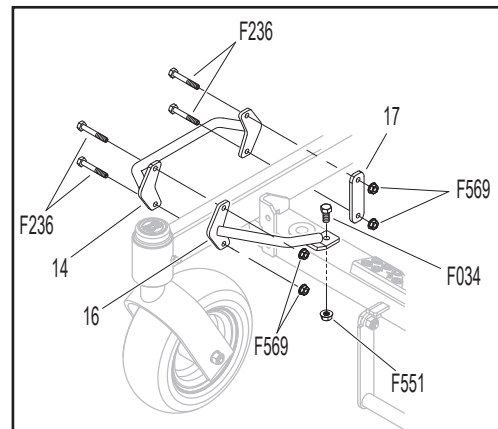
29. Tighten the jam nuts on both control rods.
30. Install the LH guards using the hardware shown. Do not overly tighten the bolts.



LH Guards Illustration

31. Install the RH guards using the hardware shown. Do not overly tighten the bolts.

NOTE: For decks prior to S/N 221298, it may be necessary to drill out and deburr the guard mount hole on the carrier frame to 5/16" before installing the guard.



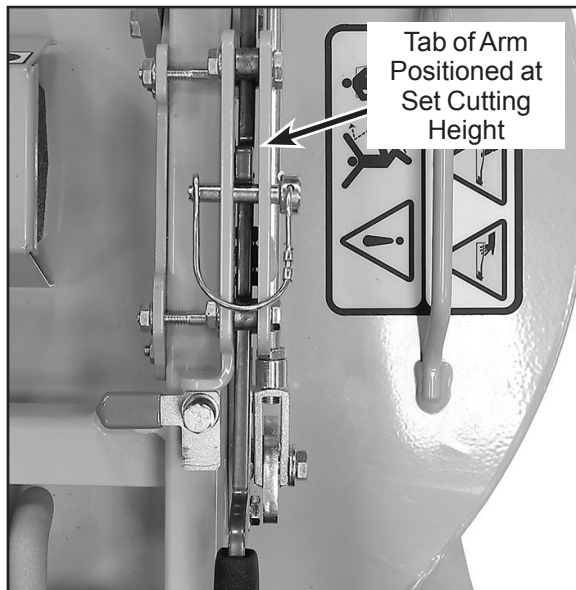
RH Guards Illustration

Operating Instructions

The A53 and A54 Deck Height Adjusters are designed to be set between 1.5" to 4" at 1/4" intervals on tractors with standard size drive tires.

SET CUTTING HEIGHT

The Wire Lock Pin stops the tab of the Height Adjustment Arm at a specific cutting height which is called the Set Cutting Height.



Height Adjustment Arm at Set Cutting Height



WARNING

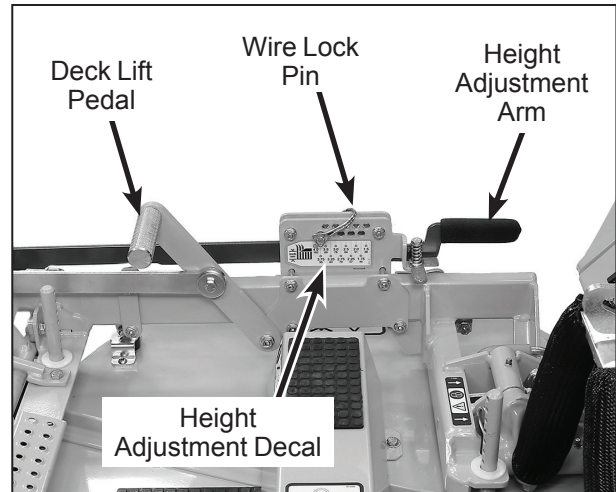
Never adjust the Set Cutting Height while the mower is moving. Before adjusting the Set Cutting Height, move the Forward Speed Control (FSC) into the NEUTRAL-PARK position, engage the parking brake, and disengage the blade clutch (PTO).

The Set Cutting Height is adjusted from operator's seat using the Deck Lift Pedal to raise the deck while adjusting pin location.

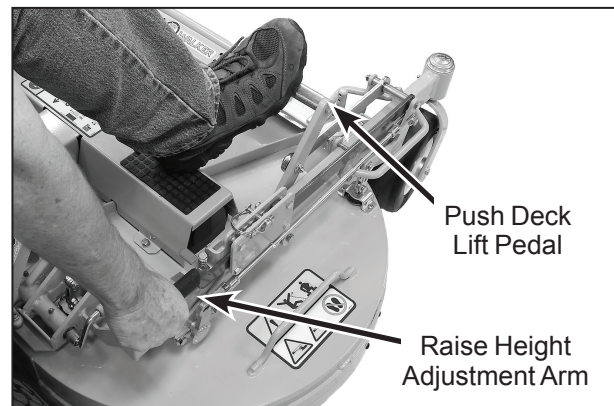
To Adjust Set Cutting Height

1. Disengage PTO and stop tractor.
2. Push down on Deck Lift Pedal until it locks in the top cutting height position.

3. Select the desired cutting height by moving the Wire Lock Pin to the location shown on the Height Adjustment Decal.
4. Push down on the Deck Lift Pedal and lift up on the Height Adjustment Arm. Slowly release the pedal while lifting the arm until the deck is in the selected cutting height position.



Set Cutting Height Adjustment



Lowering Deck to Selected Cutting Height

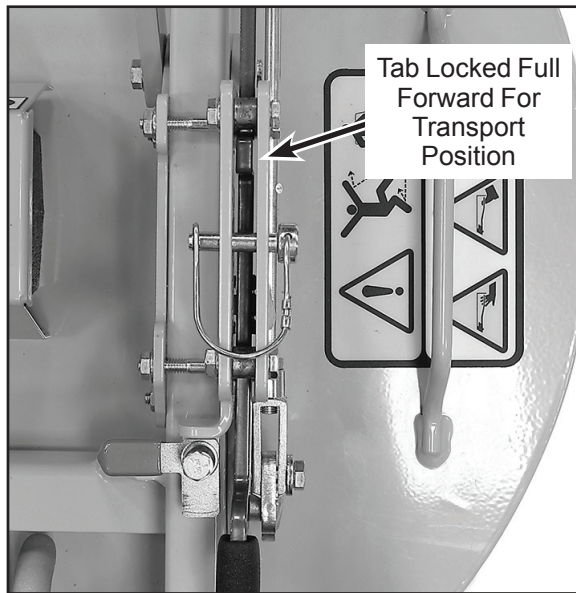
Operating Instructions

TRANSPORT POSITION

The top cutting height (4") is a locking position that is called the Transport position. This position is recommended for increased ease when driving the tractor (transporting it) between mowing locations.

To Place Deck In Transport Position:

1. Disengage the PTO.
2. Push down on Deck Lift Pedal until it locks in the Transport position.



Transport Position

To Release From Transport Position:

Push down on the Deck Lift Pedal while lifting the Height Adjustment Arm to release the deck back to the Set Cutting Height.

LOCKOUT ARM

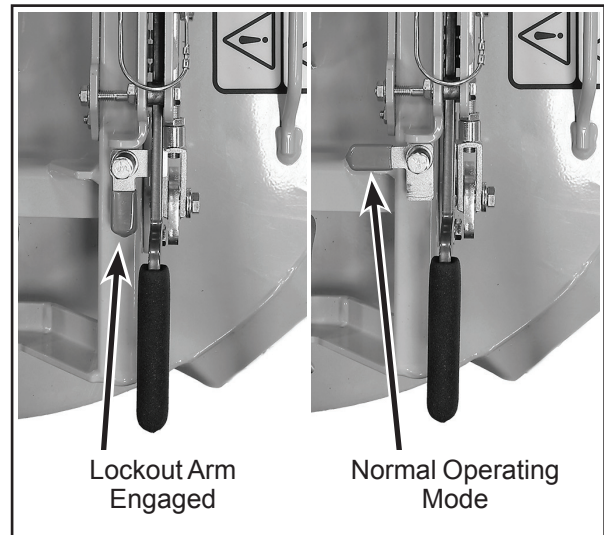
The A53 and A54 are equipped with a Lockout Arm that keeps the Deck Height Adjuster from locking in the Transport position. The Lockout Arm can be used when it is necessary to make **temporary** height increases **while mowing**. This feature can be helpful when mowing leaves that might build up on the front of the deck.

For Temporary Height Adjustments

1. With the Lockout Arm engaged, press down on the Deck Lift Pedal while mowing.
2. Slowly release the Deck Lift Pedal to return the deck to the Set Cutting Height.

WARNING

Never change the Set Cutting Height while the mower is moving. Only a temporary height increase can be made with the Lockout Arm engaged while mowing.

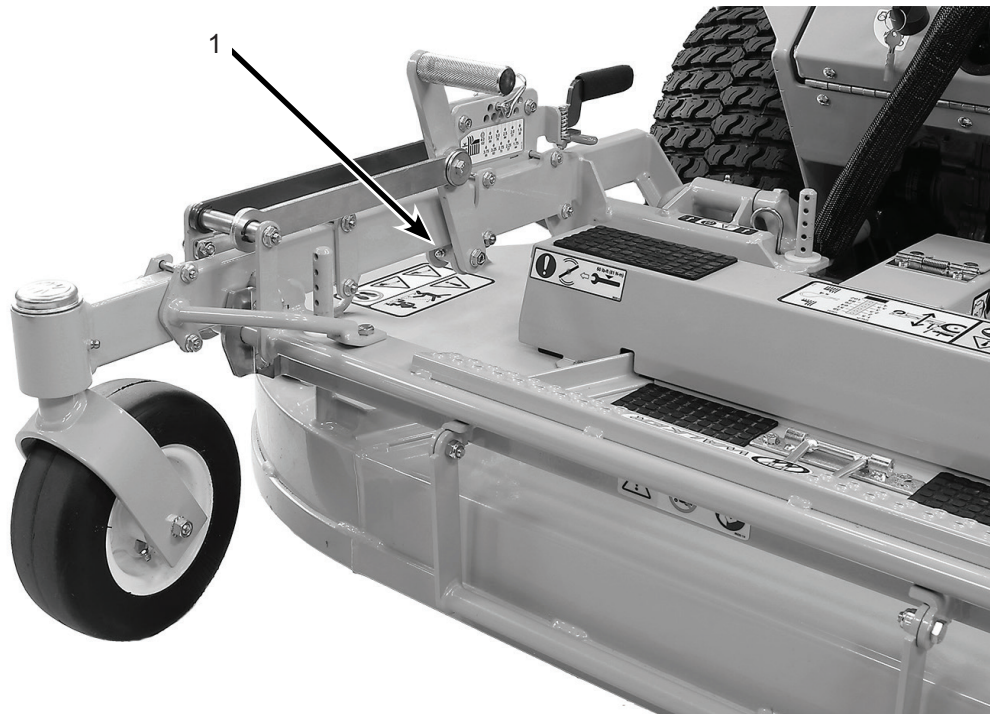


Lockout Arm Positions

Lubrication

Ident No.	Location	Lubrication Type	No. Places
1	Deck Lift Pivot	Grease*	1

* Grease every twenty-five (25) hours.

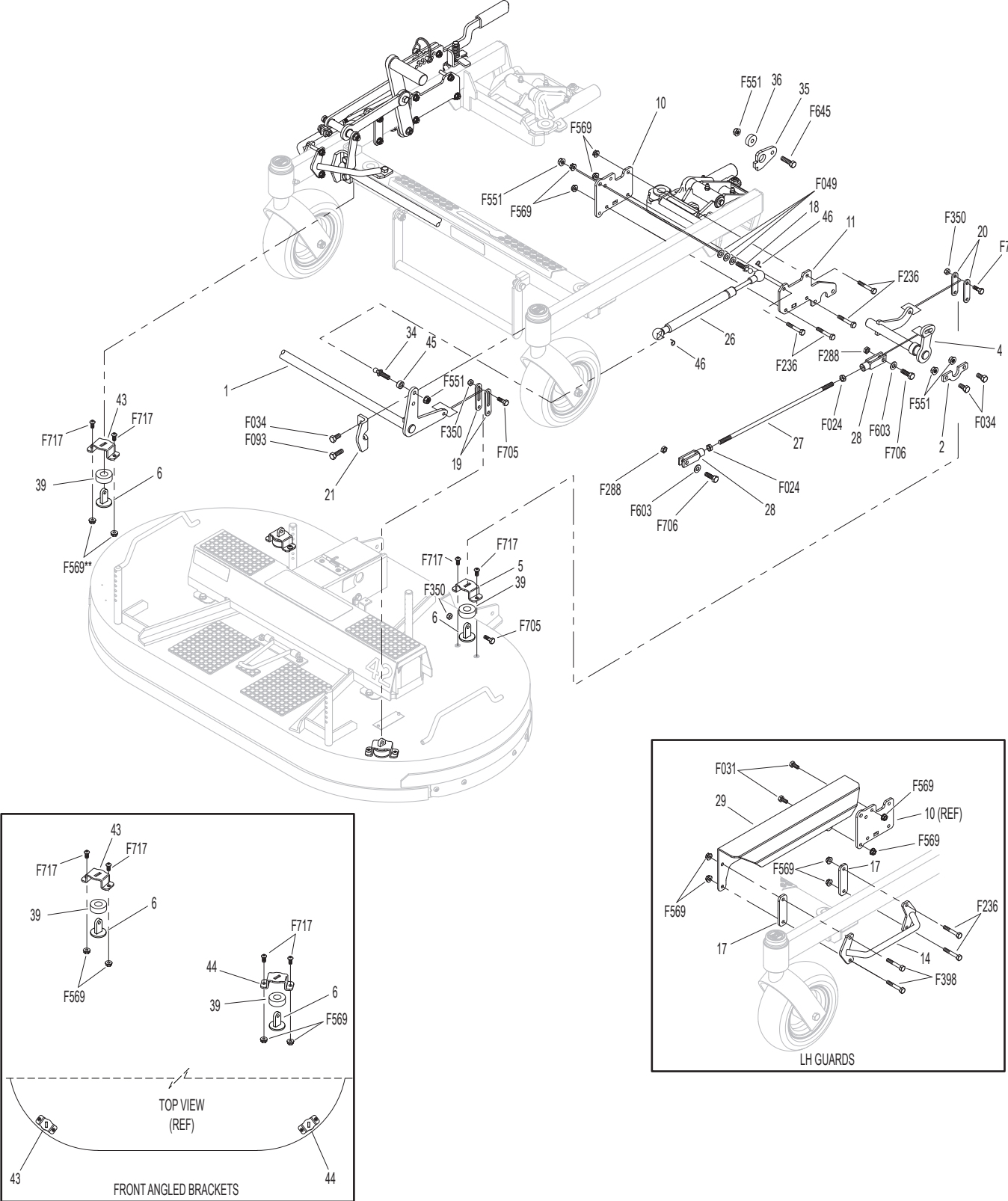


A53 and A54 Lubrication Points

PARTS LIST (A53)

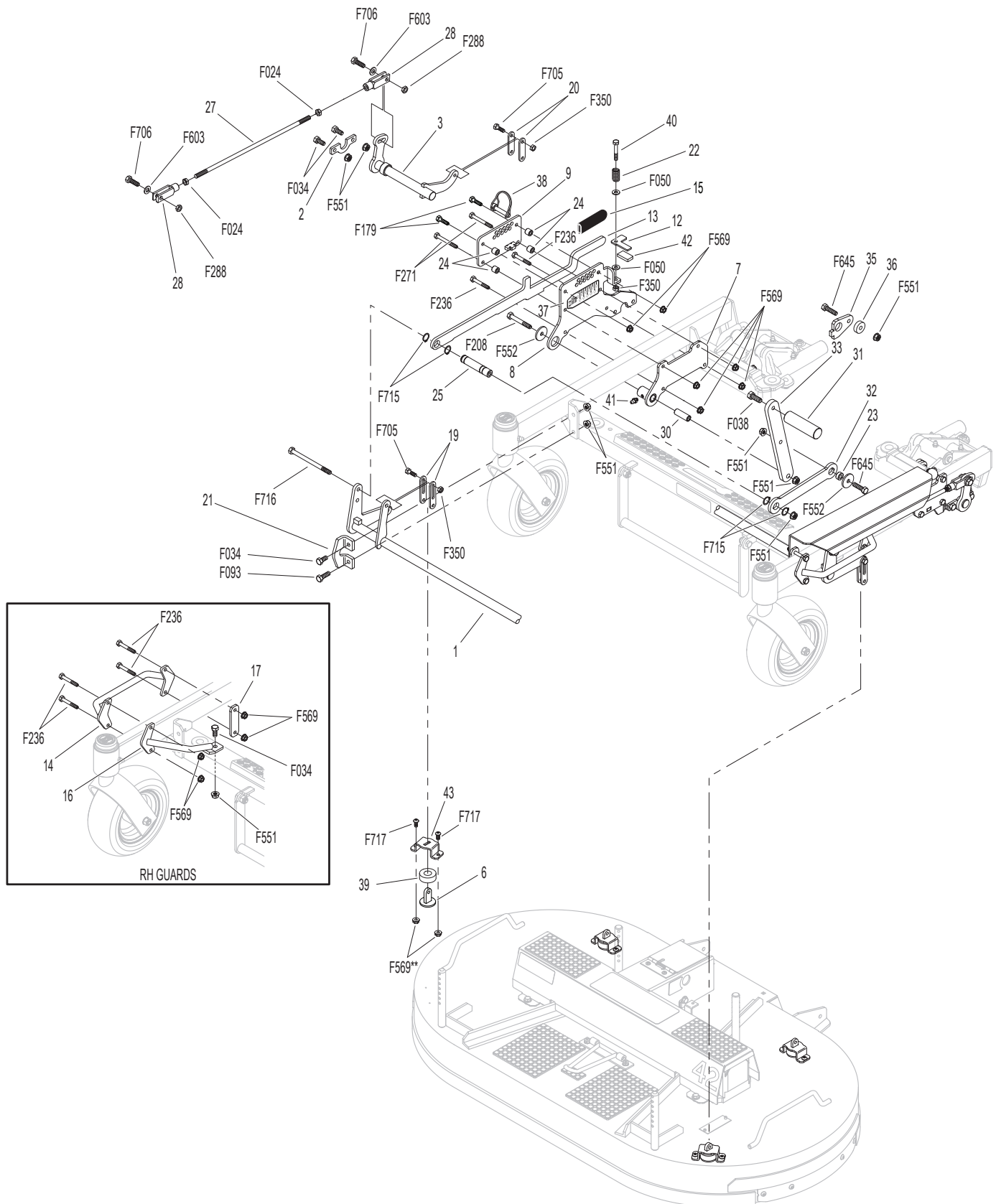
ITEM NO.	PART NO.	DESCRIPTION	NO. REQ'D	ITEM NO.	PART NO.	DESCRIPTION	NO. REQ'D
42" Deck Height Adjuster Kit				Fasteners			
1	7210-1	Lift Rod Weldment / DHA 42"	1	F024	5/16-24 Jam Nut		4
2	7211-8	Pivot Saddle / DHA	2	F031	1/4-20 x 5/8 Hex Bolt		2
3	7210-2	Lift Arm, RH / DHA	1	F034	5/16-18 x 3/4 Hex Bolt		7
4	7210-3	Lift Arm, LH / DHA	1	F038	3/8-16 x 1 Hex Bolt		1
5	7211-9	Lift Saddle / DHA	2	F049	5/16 SAE Washer		3
6	7211-4	Saddle Lift Arm / DHA	4	F050	1/4 SAE Washer		2
7	7211-6	Inner Pivot Plate, RH / DHA (Includes Item # 41)	1	F093	5/16-18 x 1 Hex Bolt		2
8	7211-10	Pivot Plate, RH / DHA	1	F179	1/4-20 x 1 Hex Bolt		2
9	7211-42	Height Plate / DHA	1	F208	5/16-18 x 2-1/4 Hex Bolt		1
10	7211-11	Inner Pivot Plate, LH / DHA	1	F236	1/4-20 x 1-3/4 Hex Bolt		12
11	7211-7	Pivot Plate, LH / DHA	1	F271	1/4-20 x 2-1/4 Hex Bolt		2
12	7210-5	Lockout Arm	1	F288	5/16-18 ESNA Jam Nut		4
13	7210-31	Height Adjustment Arm (Includes Item # 15)	1	F350	1/4-20 LP Nylock		9
14	7210-13	Outside Guard / DHA	2	F398	1/4-20 x 2 Hex Bolt		2
15	5850-3	Handle Grip, Foam (3-1/4)	1	F551	5/16-18 Flange Top Lock Nut		16
16	7210-14	Inside Guard, RH / DHA	1	F552	Washer 1.250 x .314 x .125		2
17	7210-6	Guard Mount Inside	3	F569	1/4-20 Flange Top Lock Nut		28
18	5155-13	3/4 Ball Stud	1	F603	Washer .745 x .320 x .125		4
19	7210-9	Front Lift Link	4	F645	5/16-18 x 1-1/8 Hex Bolt		3
20	7210-8	Rear Lift Link	4	F705	1/4-20 x 13/16 Hex Bolt		8
21	7210-10	Lift Rod Bracket	2	F706	5/16-18 x 1-1/16" Hex Bolt		4
22	5665	Compression Spring (1/2 x 1)	1	F715	5/8 External Snap Ring		4
23	6325-9	Spacer Bushing (5/8 x 5/16 x .280)	1	F716	5/16-18 x 4 Hex Bolt		1
24	6325-11	Spacer (.5 x .250 x .375)	4	F717	1/4-20 x 1/2 Button Head		8
25	7211-17	Lifting Cross Tube / DHA	1				
26	2215-15	Gas Spring Assembly	1				
27	5213-8	Control Rod (13-3/8") 5/16 Threads	2				
28	5280-5	Clevis Fork, Long (5/16)	4				
29	7210-12	Gas Spring Cover 42 / DHA	1				
30	7211-13	Pivot Bushing (1/2 x 5/16 x 1.468)	1				
31	2722-8	Foot Pedal / DS60/DS52	1				
32	7210-15	Foot Pedal Link 42 / DHA	1				
33	7211-16	Foot Pedal Arm	1				
34	5146-2	10mm Ball Stud, 5/16-18	1				
35	7211-14	Inner Retainer	2				
36	6325-14	Spacer (1.0 x 5/16 x 5/16)	2				
37	8600-38	Decal, Deck Height Adj	1				
38	7775-9	Wire Lock Pin (5/16 x 1-3/8)	1				
39	7434-1	Washer 1-3/8 x 5/8-1/2 Thick	4				
40	4452-6	Steering Pivot (1/4-20 x 1-5/8)	1				
41	5830	Grease Fitting	1				
42	5847	Plastic Tip	1				
43	7211-18	RH Lift Saddle	1				
44	7211-19	LH Lift Saddle	1				
45	2720-3	Height Adjustment Spacer	1				
46	5147	Spring Clip	2				

Use only genuine **Walker®** replacement parts.



Use only genuine **Walker®** replacement parts.

PARTS DIAGRAM (A53)



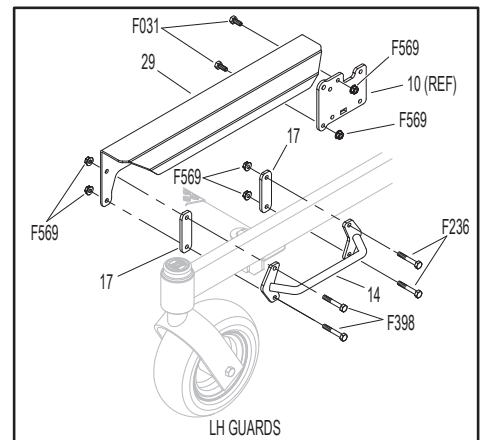
Use only genuine **Walker®** replacement parts.

PARTS LIST (A54)

ITEM NO.	PART NO.	DESCRIPTION	NO. REQ'D	ITEM NO.	PART NO.	DESCRIPTION	NO. REQ'D
48" & 52" Deck Height Adjuster Kit				Fasteners			
1	7211-1	Lift Rod Weldment / DHA 48"	1	F024	5/16-24 Jam Nut		4
2	7211-8	Pivot Saddle / DHA	2	F031	1/4-20 x 5/8 Hex Bolt		2
3	7211-2	Lift Arm, RH / DHA	1	F034	5/16-18 x 3/4 Hex Bolt		7
4	7211-3	Lift Arm, LH / DHA	1	F038	3/8-16 x 1 Hex Bolt		1
5	7211-9	Lift Saddle / DHA	4	F049	5/16 SAE Washer		3
6	7211-4	Saddle Lift Arm / DHA	4	F050	1/4 SAE Washer		2
7	7211-6	Inner Pivot Plate, RH / DHA (Includes Item # 41)	1	F093	5/16-18 x 1 Hex Bolt		2
8	7211-10	Pivot Plate, RH / DHA	1	F179	1/4-20 x 1 Hex Bolt		2
9	7211-42	Height Plate / DHA	1	F208	5/16-18 x 2-1/4 Hex Bolt		1
10	7211-11	Inner Pivot Plate, LH / DHA	1	F236	1/4-20 x 1-3/4 Hex Bolt		12
11	7211-7	Pivot Plate, LH / DHA	1	F271	1/4-20 x 2-1/4 Hex Bolt		2
12	7210-5	Lockout Arm	1	F288	5/16-18 ESNA LP Nut		4
13	7210-4	Height Adjustment Arm (Includes Item # 15)	1	F350	1/4-20 LP Nylock		9
14	7210-13	Outside Guard / DHA	2	F398	1/4-20 x 2 Hex Bolt		2
15	5850-3	Handle Grip, Foam (3-1/4)	1	F551	5/16-18 Flange Top Lock Nut		16
16	7210-14	Inside Guard, RH / DHA	1	F552	Washer 1.250 x .314 x .125		2
17	7210-6	Guard Mount Inside	3	F569	1/4-20 Flange Top Lock Nut		28**
18	5155-13	10 mm Ball Stud, 5/16-18 x 3/4	1	F603	Washer .745 x .320 x .125		4
19	7210-9	Front Lift Link	4	F645	5/16-18 x 1-1/8 Hex Bolt		3
20	7210-8	Rear Lift Link	4	F705	1/4-20 x 13/16 Hex Bolt		8
21	7210-10	Lift Rod Bracket	2	F706	5/16-18 x 1-1/16" Hex Bolt		4
22	5665	Compression Spring (1/2 x 1)	1	F715	5/8 External Snap Ring		4
23	6325-9	Spacer Bushing (5/8 x 5/16 x .280)	1	F716	5/16-18 x 4 Hex Bolt		1
24	6325-11	Spacer (.5 x .250 x .375)	4	F717	1/4-20 x 1/2 Button Head		8
25	7211-17	Lifting Cross Tube / DHA	1				
26	2215-16	Gas Spring Assembly	1				
27	5213-9	Control Rod (16-1/2")	2				
28	5280-5	Clevis Fork, Long (5/16)	4				
29	7211-12	Gas Spring Cover 48, 52 / DHA	1				
30	7211-13	Pivot Bushing (1/2 x 5/16 x 1.468)	1				
31	2722-8	Foot Pedal / DS60/DS52	1				
32	7211-15	Foot Pedal Link 48, 52 / DHA	1				
33	7211-16	Foot Pedal Arm	1				
34	5146-2	10mm Ball Stud, 5/16-18 x 1	1				
35	7211-14	Inner Retainer	2				
36	6325-14	Spacer (1.0 x 5/16 x 5/16)	2				
37	8600-38	Decal, Deck Height Adj	1				
38	7775-9	Wire Lock Pin (5/16 x 1-3/8)	1				
39	7434-1	Washer 1-3/8 x 5/8-1/2 Thick	4				
40	4452-6	Steering Pivot (1/4-20 x 1-5/8)	1				
41	5830	Grease Fitting	1				
42	5847	Plastic Tip	1				
43	7211-18	RH Lift Saddle	1*				
44	7211-19	LH Lift Saddle	1*				
45	2720-3	Spacer (9/16 x 5/16 x .438)	1				
46	5147	Spring Clip	2				

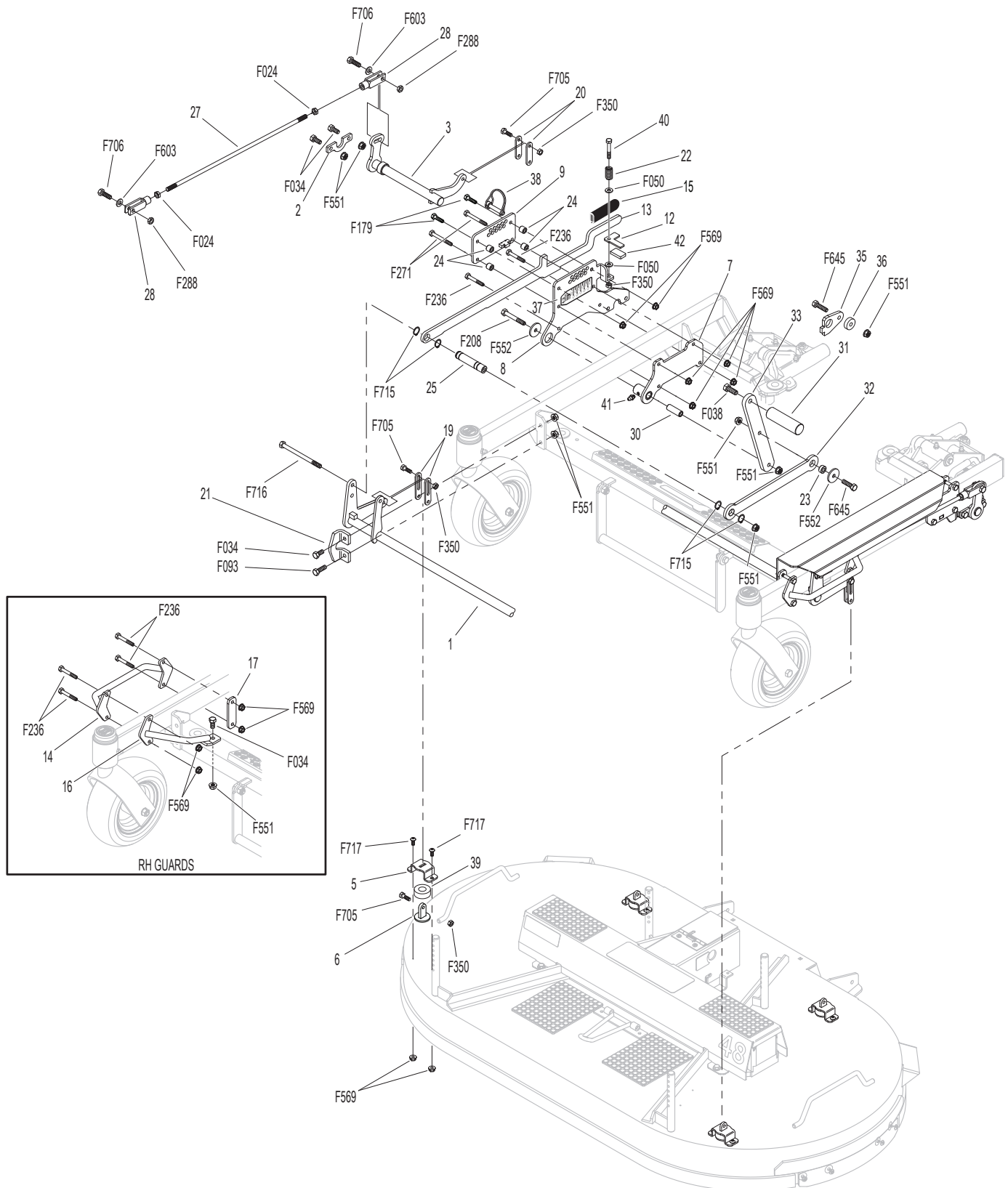
* DM52 only

** Four (4) F569 are used on rear Lift Saddles of all decks except DC48.



17

PARTS DIAGRAM (A54)



Use only genuine **Walker®** replacement parts.

MAINTENANCE AND SERVICE RECORD SHEET

[illegible]

LIMITED WARRANTY FOR WALKER A53 & A54 DECK HEIGHT ADJUSTERS

1. What this warranty covers, and for how long:

Walker Manufacturing company will, at its option, repair or replace, without charge, any part covered by this warranty which is found to be defective in material and/or workmanship within one (1) year after date of sale to the original retail purchaser unless the product is used for rental purposes, in which case this warranty is limited to ninety (90) days. At Walker's request, customer will make the defective part available for inspection by Walker and/or return the defective part to Walker, transportation charges prepaid. All parts and components of the Walker implement hitch are covered by this warranty.

2. What this warranty does not cover:

A. This warranty does not cover defects caused by depreciation or damage caused by normal wear, accidents, improper maintenance, improper use or abuse of the product, alterations, or failure to follow the instructions contained in the Operator's Manual for operation and maintenance.

B. The customer shall pay any charges for making service calls and/or for transporting the attachment to and from the place where the inspection and/or warranty work is performed.

3. How to obtain service under this warranty:

Warranty service can be arranged by contacting the dealer where you purchased the machine or by contacting Walker Manufacturing Company, 5925 East Harmony Road, Ft. Collins, CO 80528. Proof of the date of purchase may be required to verify warranty coverage.

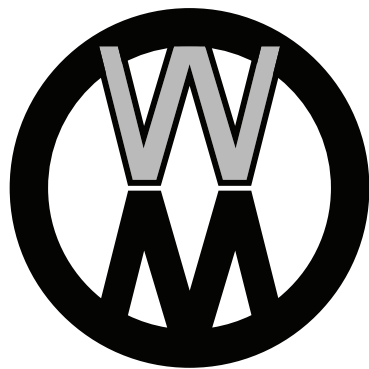
4. Warranty limitation:

A. THERE IS NO OTHER EXPRESS WARRANTY. ANY WARRANTY THAT MAY BE IMPLIED FROM THIS PURCHASE INCLUDING MERCHANTABILITY AND FITNESS FOR A PARTICULAR PURPOSE IS HEREBY LIMITED TO THE DURATION OF THIS WARRANTY AND TO THE EXTENT PERMITTED BY LAW ANY AND ALL IMPLIED WARRANTIES ARE EXCLUDED. Some states do not allow limitations on how long an implied warranty lasts, so the above limitations may not apply to you.

B. WALKER WILL NOT BE LIABLE FOR ANY INCIDENTAL, CONSEQUENTIAL, OR SPECIAL DAMAGES AND/OR EXPENSES IN CONNECTION WITH THE PURCHASE OR USE OF THE MACHINE. Some states do not allow the exclusion or limitation of incidental or consequential damages, so the above limitation(s) or exclusion(s) may not apply to you.

C. Only the warranty expressed in this limited warranty shall apply and no dealer, distributor, or individual is authorized to amend, modify, or extend this warranty in any way. Accordingly, additional statements such as dealer advertising or presentations, whether oral or written, do not constitute warranties by Walker, and should not be relied upon.

D. This warranty gives you specific legal rights, and you may also have other rights which vary from state to state.



WALKER

WALKER MFG. CO. • 5925 E. HARMONY ROAD, FORT COLLINS, CO 80528 • (970) 221-5614
FORM NO. 100924 PRINTED IN USA www.walker.com ©2024 WALKER MFG. CO