

WALKER

Illustrated Parts Manual

C23i



Note: The C23i shown in this manual is equipped with the optional 10.0 bushel catcher.

Beginning S/N: 191079
P/N 6000-49

KEY TO ABBREVIATIONS USED IN THIS MANUAL

<i>Abbreviation</i>	<i>What it Represents</i>
° (Dimension)	Degrees (Angle)
" (Dimension)	inches
(-)	Negative (Polarity)
(+)	Positive (Polarity)
-1 (as deck style designation)	Standard (Aluminum) Gear Drive Deck
-2 (as deck style designation)	Heavy Duty (Cast Iron) Gear Drive Deck
-3 (as deck style designation)	Belt Drive Deck
AT	All-Terrain
CCW	Counter-clockwise
CW	Clockwise
D	Diameter
DC	Deck, Collection (number refers to size in inches)
DM	Deck, Mulching (number refers to size in inches)
DR	Deck, Rear Discharge (number refers to size in inches)
DS	Deck, Side Discharge (number refers to size in inches)
DU	Garlock (Bearing)
ESNA (Fastener)	Nylon Insert Locknut
FSC	Forward Speed Control
GA	Gauge
gal.	gallon
GHS	Grass Handling System
GR (Fastener)	Grade
HD	Heavy Duty
HP	Horse Power
ID	Identification or Inside Diameter
L	Length
LH	Left Hand (orientated with operator on seat)
LP	Low Profile
mm (Dimension)	millimeters
MS (Fastener)	Machine Screw
NS (as part number)	Item is not sold by Walker Manufacturing
OD	Outside Diameter
oz.	ounce
PFH (Fastener)	Phillips Flat Head
P/N	Part Number
PPH (Fastener)	Phillips Pan Head
PTH (Fastener)	Phillips Truss Head
PTO	Power Take-Off
QKS	Quick Slide
qt.	quart
RH	Right Hand (orientated with operator on seat)
SAE (Fastener)	Society of Automotive Engineers
SBH (Fastener)	Socket Button Head (Bolt)
SFH (Fastener)	Slotted Flat Head
SHC (Fastener)	Socket Head Cap
SHL (Fastener)	Shoulder (Bolt)
SM (Fastener)	Sheet Metal (Screw)
S/N	Serial Number
SQH (Fastener)	Square Head
SS (Fastener)	Stainless Steel
ST (Fastener)	Self-Tapping (Screw)
V	Volts

NOTE: In some instances, combinations of abbreviations may be used (e.g. PPHMS - Phillips Pan Head Machine Screw).

ILLUSTRATED PARTS LIST

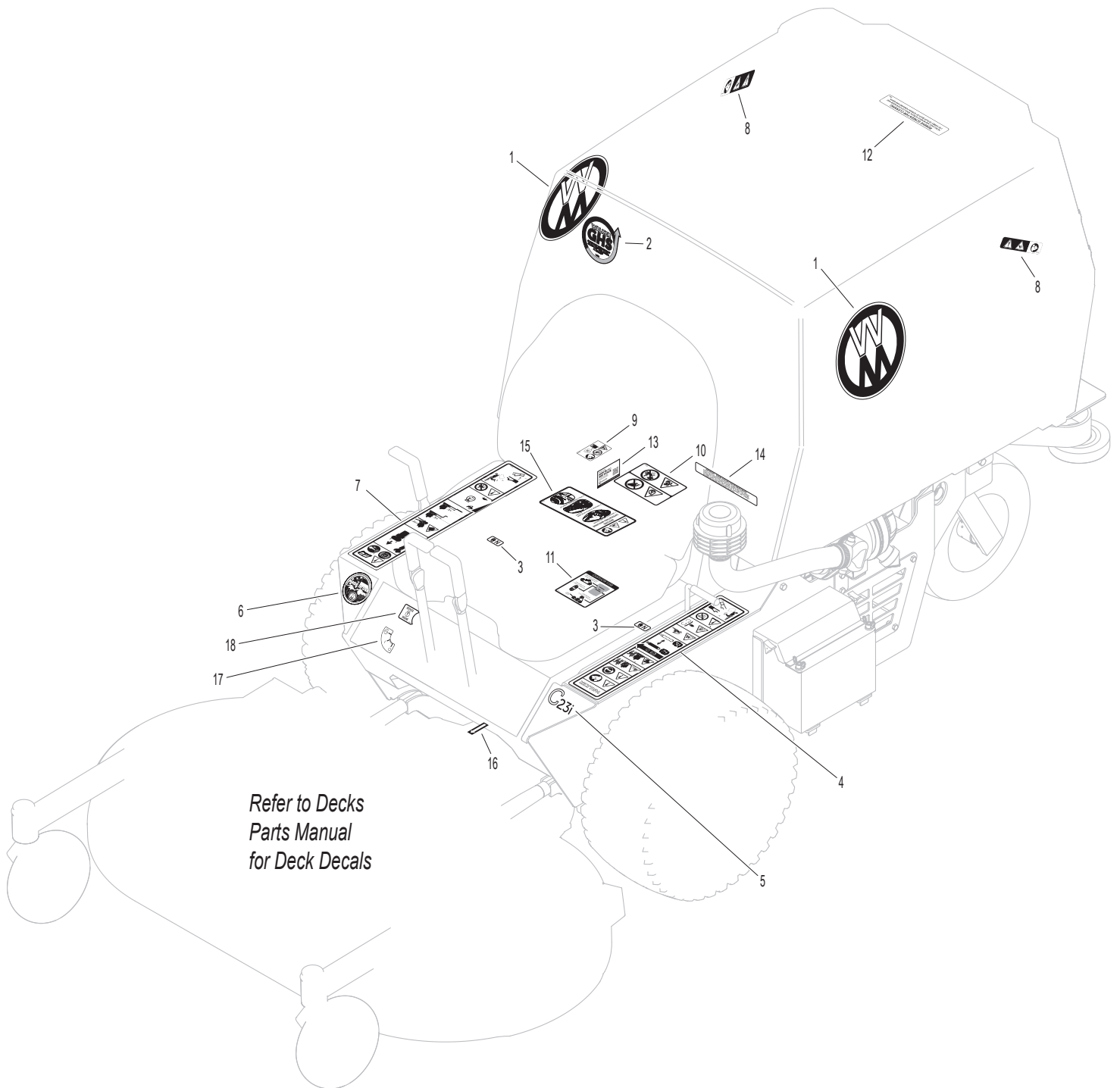
<i>Section of Tractor Covered</i>	<i>Page</i>	<i>Section of Tractor Covered</i>	<i>Page</i>
Decals		Electrical Components	
Tractor Decals	2	Electrical Assembly	30
Body / Chassis Assemblies		Electrical Assemblies (GHS 7.0 Bushel Components).....	32
Body / Chassis Assembly (7.0 / 10.0).....	4	Electrical Assemblies (GHS 10.0 Bushel Components).....	34
Rear Body Assembly (7.0)	6	Maintenance	
Rear Body Assembly (10.0)	8	Lubrication Points	36
Tractor Components		Wiring Schematic	38
Main Component Power Transmission	10	Maintenance And Service Record Sheet	39
Engine Group	12	Warranty	
Hydrostatic Ground Drive Assemblies.....	14	Limited Warranty	41
Steering Control Assemblies.....	16		
GHS Group (7.0).....	18		
GHS Group (10.0).....	20		
GHS Powerfil® Assembly (7.0)	22		
GHS Powerfil® Assembly (10.0)	24		
GHS 7.0 Bushel Catcher Assembly.....	26		
GHS 10.0 Bushel Catcher Assembly.....	28		

TRACTOR DECALS

ITEM NO.	PART NO.	DESCRIPTION	LOCATION	NO. REQ'D GHS
Walker Product Decals				
1	5800-22	Walker (8" Round)	7.0 / 10.0 Bushel Catcher (one on each side)	2
2	5813-2	Decal, 4" Grass-Pak Powerfil®	Powerfil® Cover Plate	1
3	9804-1	Axle Lockout	Chassis	2
4	8600-75	LH Fender	Chassis, LH near Seat	1
5	8821-33	Decal, C23i	Chassis, Front	1
6	5856-1	Made in USA	Chassis, Front	1
7	8600-68	RH Fender	Chassis, RH near Seat	1
Danger Decals Warning Decals Caution Decals				
8	8600-10	Danger, Pinch Point	7.0 / 10.0 Bushel Catcher Mounting Frame Assembly (one on each side)	2
9	8600-12	Danger, Engine Exhaust	Fuel Pump Module Cover, Top	1
10	8600-4	Danger, Rotating Blower Blades	Seat Panel Cover Plate	1
11	6107-1	Decal, Belt Routing	Seat Panel, Underside	1
Maintenance Decals				
12	5869	Removable Screen	7.0 / 10.0 Bushel Catcher Removable Screen	1
13	6895-103	Kohler 300 Hour Oil	Fuel Pump Module Cover, LH Side	1
14	5855	Important, Engine Cooling	Catcher Support, Front	1
15	8394-35	Jackshaft Decal	Jackshaft	1
16	6875	PTO Alignment Arrow	Universal Joint Tube Assembly	1
17	8600-54	Decal, Ignition Switch	Seat Panel, Front	1
18	5802-4	Engine Service Light	Seat Panel, Front	1

NOTE: All parts requiring decals are shipped with decals applied.

TRACTOR DECALS



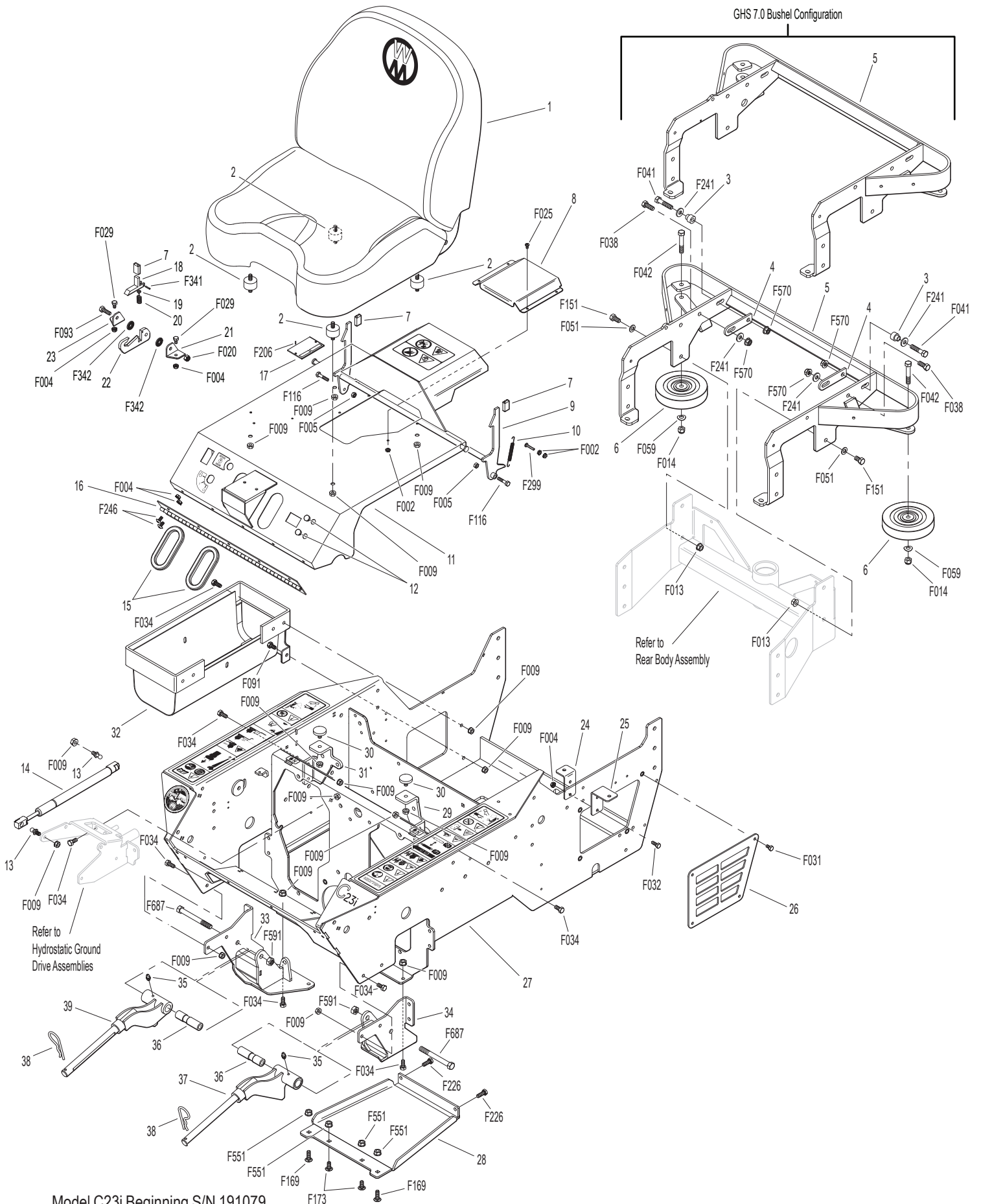
BODY / CHASSIS ASSEMBLY (7.0 / 10.0)

ITEM NO.	PART NO.	DESCRIPTION	NO. REQ'D	ITEM NO.	PART NO.	DESCRIPTION	NO. REQ'D
Seat Assembly				Deck Support Arm & Hitch Assemblies			
1	6104-31	Comfort Seat	1	33	6431-12	Deck Arm Mount, RH	1
2	7440-5	Shock Mount (1-1/4 x 3/4)	4	34	6431-11	Deck Arm Mount, LH	1
Rear Bumper Assembly				35	5830	Grease Fitting	2
3	7516-5	Catcher Pivot Bushing	2	36	6840-4	Deck Arm Bushing (3")	2
4	7517-4	Catcher Pivot Plate	2	37	6431-13	Deck Support Arm, LH (Includes Item # 35)	1
5	7516-12	Rear Bumper (10.0)	1	38	5775-2	Hitch Pin (#6)	2
	7516-13	Rear Bumper (7.0)	*	39	6431-14	Deck Support Arm, RH (Includes Item # 35)	1
6	5162	Roller Wheel (5" Rubber)	2	Fasteners			
Body Assembly					F002	10-24 Keps Nut	6
7	5847	Plastic Tip	3		F004	1/4-20 Keps Nut	12
8	6101-11	Cover Plate	1		F005	1/4-20 ESNA Nut	2
9	7383-29	Body Latch Trigger	1		F009	5/16-18 Whiz Locknut	25
10	7222	Extension Spring (1/4 x 3)	1		F013	3/8-16 Whiz Locknut	4
11	6100-54	Front Body	1		F014	3/8-16 ESNA Nut	2
12	5989-55	Dome Plug (1/2)	2		F020	5/16-18 ESNA Nut	1
13	5146	10mm Ball Stud	2		F025	10-24 x 3/8 PPHMS	4
14	4145-2	Gas Spring Assembly (Includes Item # 13)	1		F029	1/4-20 x 1/2 Hex Bolt	2
15	5180	Edge Molding, Lever Opening	2		F031	1/4-20 x 5/8 Hex Bolt	4
16	7504-5	Hinge (19")	1		F032	1/4-20 x 3/4 Hex Bolt	2
17	NS	Body ID Plate	1		F034	5/16-18 x 3/4 Hex Bolt	16
Tilt-Up Latch Assembly**					F038	3/8-16 x 1 Hex Bolt	2
18	5744-20	Spring Arm, Tilt-Up Latch	1		F041	3/8-16 x 1-3/4 Hex Bolt	2
19	5744-10	Spring Pivot Bushing	1		F042	3/8-16 x 2-1/4 Hex Bolt	2
20	5744-15	Compression Spring (3/8 x 5/8)	1		F051	3/8 SAE Washer	4
21	5744-13	Mount Angle, LH	1		F059	3/8 Wave Spring Washer	2
22	5744-12	Hook, Tilt-Up Latch	1		F091	5/16-18 x 5/8 Hex Bolt	1
23	5744-14	Mount Angle, RH	1		F093	5/16-18 x 1 Hex Bolt	1
Chassis Assembly					F116	1/4-20 x 1-1/4 Hex Bolt	2
24	6307-4	Air Cleaner Mount, Short	1		F151	3/8-16 x 7/8 Hex Bolt	4
25	6307-5	Air Cleaner Mount, Long	1		F169	5/16-18 x 1 Carriage Bolt	2
26	5300-22	Side Cover	1		F173	5/16-18 x 3/4 Carriage Bolt	2
27	6307-8	Chassis Frame	1		F206	#2 x 3/16 Drive Pin	2
28	6310-5	Skid Plate	1		F226	5/16-18 x 7/8 Hex Bolt	2
29	8394-15	Front Body Bumper Mount, LH	1		F241	.375 x .875 x .10 Washer	4
30	7844	Rubber Bumper (1.25 x .250)	2		F246	1/4-20 x 1/2 PTHMS	8
31	8394-24	Front Body Bumper Mount, RH	1		F299	10-24 x 1 PPHMS	1
32	6046-11	Gas Tank Mount	1		F341	Coil Roll Pin (7/64 x 9/16)	1
					F342	5/16 Conical Washer	2
					F551	5/16-18 Flange Top Lock Nut	4
					F570	3/8-16 Flange Top Lock Nut	4
					F591	7/16-14 Flange Top Lock Nut	2
					F687	7/16-14 x 4 Hex Bolt, Grade 8	2

* Service Part Only

** Complete Tilt-Up Latch Assembly Kit available by ordering kit # 5744-5.

BODY / CHASSIS ASSEMBLY (7.0 / 10.0)

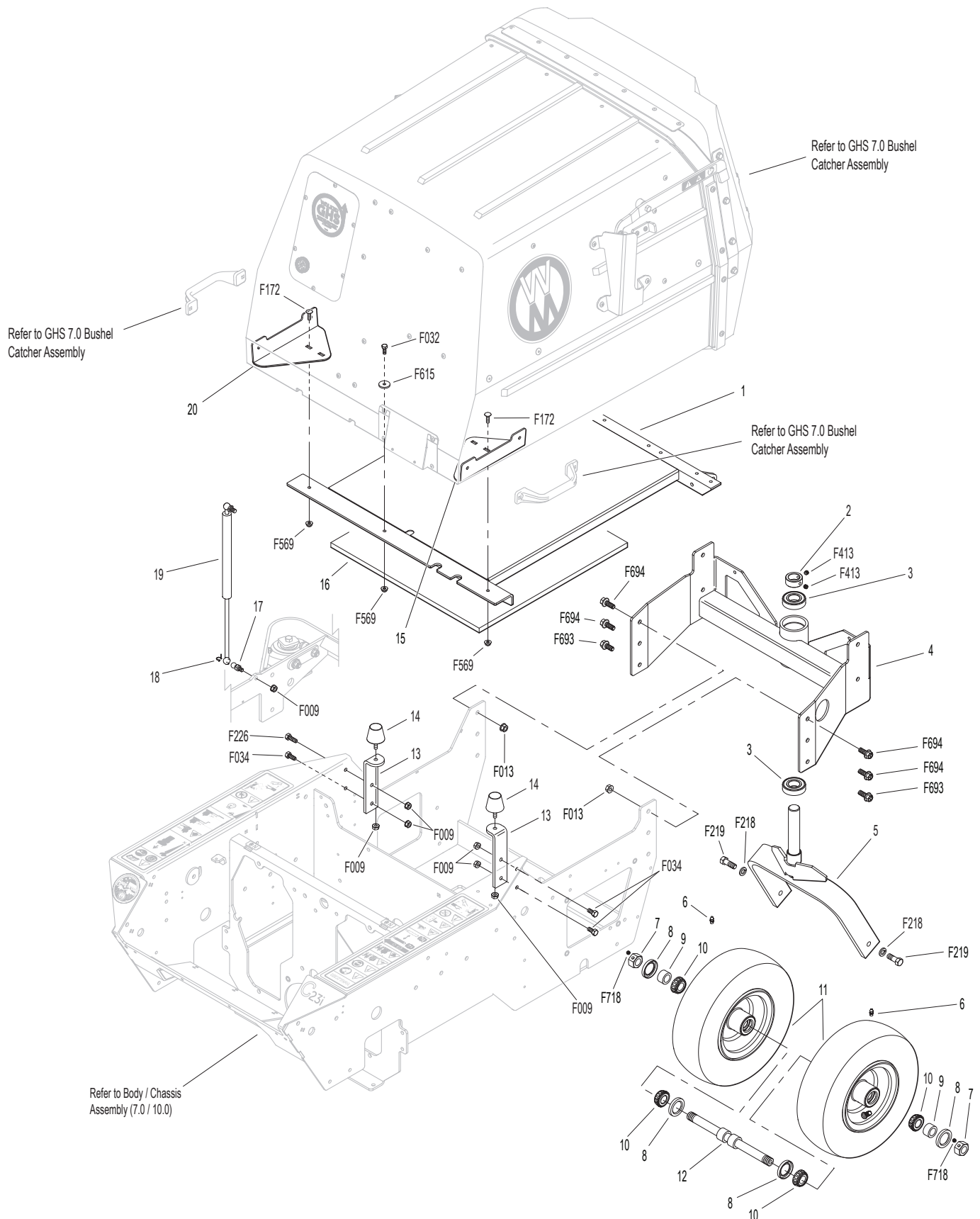


Model C23i Beginning S/N 191079
Use only genuine Walker® replacement parts.

REAR BODY ASSEMBLY (7.0)

ITEM NO.	PART NO.	DESCRIPTION	NO. REQ'D	ITEM NO.	PART NO.	DESCRIPTION	NO. REQ'D
Rear Body Assembly				Fasteners			
1	7515-1	Catcher Support	1	F009		5/16-18 Whiz Locknut	8
2	5267-1	Retainer Collar (1")	1	F013		3/8-16 Whiz Locknut	6
3	5270-1	Ball Bearing	2	F032		1/4-20 x 3/4 Hex Bolt	1
4	6342-1	Rear Chassis	1	F034		5/16-18 x 3/4 Hex Bolt	3
5	7420-12	Tail Wheel Fork	1	F172		1/4-20 x 3/4 Carriage Bolt	2
6	5830-3	Grease Fitting (45 Degrees)	2	F218		7/16 Split Lock Washer	2
7	8039	Nut, Tail Wheel Axle	2	F219		7/16-14 x 1-1/4 Hex Bolt	2
8	8768-2	Seal, Reverse Lip	4	F226		5/16-18 x 7/8 Hex Bolt	1
9	8038-1	Spacer, Wheel Axle (.750 ID x 1.125 OD)	2	F413		5/16-24 x 5/16 Set Screw	2
10	8037	Bearing Cone (3/4 ID)	4	F569		1/4-20 Flange Top Lock Nut	3
11	8035-1	Wheel & Tire Assembly (13 x 4.5-6) (With Bearing Race)	2	F615		1.0 x .255 x .125 Washer	1
	8035-3	Tail Wheel Tire (13 x 4.5-6 Ply)	*	F693		3/8-16 x 7/8 Flanged Hex Bolt	2
	8036	Wheel & Hub (6 x 3.25) (Includes Items # 6 & Bearing Race)	*	F694		3/8-16 x 1 Flanged Hex Bolt	4
	8037-2	Bearing Race	*	F718		5/16-18 x 5/16 Set Screw (Knurl Point)	2
	7420-20	Dual Tail Wheel & Tire Assembly (Includes Items # 7-12)	*	NOTE: Rear Bumper Assembly is not shown here. Refer to BODY / CHASSIS ASSEMBLY , Page 4.			
12	8038	Tail Wheel Axle (3/4 x 10-3/8)	1	* Service Part Only			
13	6342-7	Catcher Bumper Mount	2				
14	5845	Rubber Bumper (1.50 x 1.25)	2				
15	8515-17	Catcher Handle Plate, LH	1				
16	7190-6	Insulation Foam Pad	1				
17	7146	13mm Ball Stud	2				
18	7147	Spring Clip	2				
19	7145	Gas Spring Assembly (Includes Items # 17 & 18)	1				
20	8515-18	Catcher Handle Plate, RH	1				

REAR BODY ASSEMBLY (7.0)

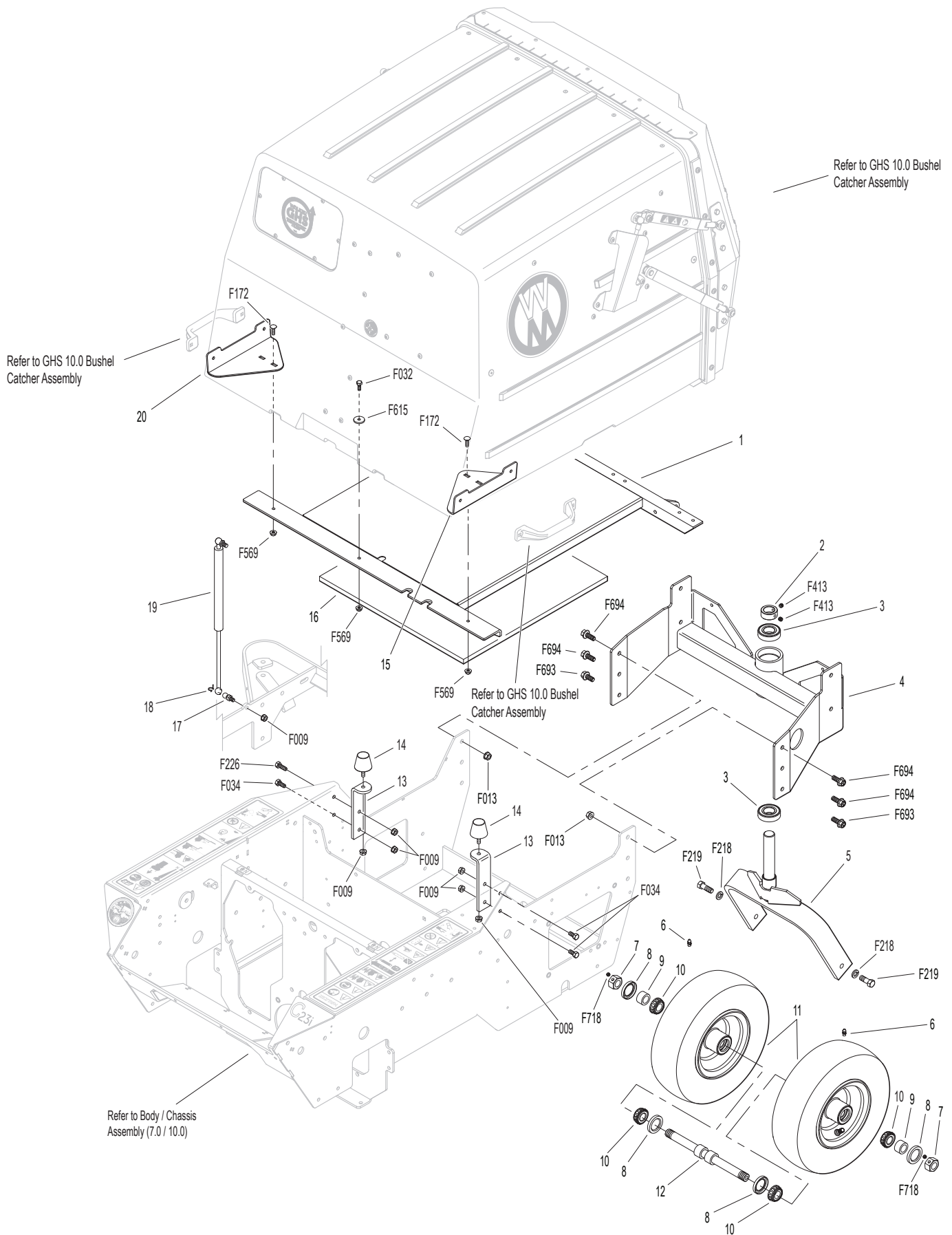


Model C23i Beginning S/N 191079
 Use only genuine **Walker**® replacement parts.

REAR BODY ASSEMBLY (10.0)

ITEM NO.	PART NO.	DESCRIPTION	NO. REQ'D	ITEM NO.	PART NO.	DESCRIPTION	NO. REQ'D
Rear Body Assembly				Fasteners			
1	6515-1	Catcher Support	1	F009		5/16-18 Whiz Locknut	8
2	5267-1	Retainer Collar (1")	1	F013		3/8-16 Whiz Locknut	6
3	5270-1	Ball Bearing	2	F032		1/4-20 x 3/4 Hex Bolt	1
4	6342-1	Rear Chassis	1	F034		5/16-18 x 3/4 Hex Bolt	3
5	7420-12	Tail Wheel Fork	1	F172		1/4-20 x 3/4 Carriage Bolt	2
6	5830-3	Grease Fitting (45 Degrees)	2	F218		7/16 Split Lock Washer	2
7	8039	Nut, Tail Wheel Axle	2	F219		7/16-14 x 1-1/4 Hex Bolt	2
8	8768-2	Seal, Reverse Lip	4	F226		5/16-18 x 7/8 Hex Bolt	1
9	8038-1	Spacer, Wheel Axle (.750 ID x 1.125 OD)	2	F413		5/16-24 x 5/16 Set Screw	2
10	8037	Bearing Cone (3/4 ID)	4	F569		1/4-20 Flange Top Lock Nut	3
11	8035-1	Wheel & Tire Assembly (13 x 4.5-6) (With Bearing Race)	2	F615		1.0 x .255 x .125 Washer	1
	8035-3	Tail Wheel Tire (13 x 4.5-6 Ply)	*	F693		3/8-16 x 7/8 Flanged Hex Bolt	2
	8036	Wheel & Hub (6 x 3.25) (Includes Items # 6 & Bearing Race)	*	F694		3/8-16 x 1 Flanged Hex Bolt	4
	8037-2	Bearing Race	*	F718		5/16-18 x 5/16 Set Screw (Knurl Point)	2
	7420-20	Dual Tail Wheel & Tire Assembly (Includes Items # 7-12)	*	NOTE: Rear Bumper Assembly is not shown here. Refer to BODY / CHASSIS ASSEMBLY , Page 4.			
12	8038	Tail Wheel Axle (3/4 x 10-3/8)	1	* Service Part Only			
13	6342-7	Catcher Bumper Mount	2				
14	5845	Rubber Bumper (1.50 x 1.25)	2				
15	8515-17	Catcher Handle Plate, LH	1				
16	7190-6	Insulation Foam Pad	1				
17	7146	13mm Ball Stud	2				
18	7147	Spring Clip	2				
19	7145	Gas Spring Assembly (Includes Items # 17 & 18)	1				
20	8515-18	Catcher Handle Plate, RH	1				

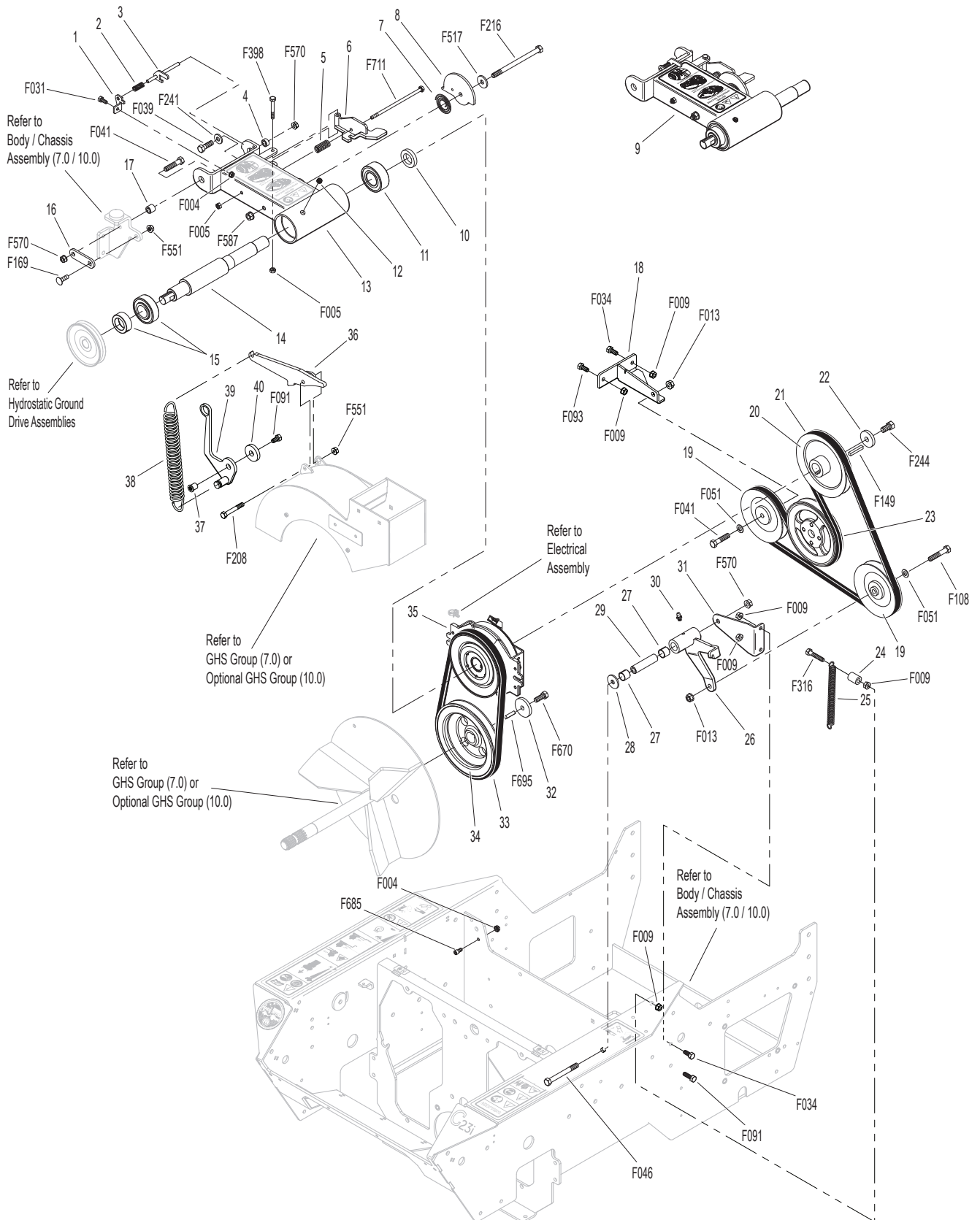
REAR BODY ASSEMBLY (10.0)



MAIN COMPONENT POWER TRANSMISSION

ITEM NO.	PART NO.	DESCRIPTION	NO. REQ'D	ITEM NO.	PART NO.	DESCRIPTION	NO. REQ'D
Swing-Away Jackshaft Assembly				Jackshaft Tensioner Assembly			
1	8394-10	Lock Tab	1	36	8394-40	Jackshaft Tensioner Lever	1
2	7223-5	Compression Spring (3/8 x 1-1/2)	1	37	7620-16	Roller Bushing	1
3	8394-9	Locking Pin	1	38	5221-6	Extension Spring (1-1/4 x 6-1/2)	1
4	6325-8	Bushing (.375 x .625 x .280)	1	39	8394-11	Jackshaft Spring Tensioner	1
5	5665-2	Compression Spring (.590 x 1.438)	1	40	8394-12	Washer (1/2 x 1-1/2 x .288)	1
6	6410-9	Clutch Stop	1	Fasteners			
7	6235	Spring, Belt Tension Cam	1	F004	1/4-20 Keps Nut		2
8	8394-18	Jackshaft Tension Cam	1	F005	1/4-20 ESNA Nut		2
9	8394-37	Jackshaft Swingarm Assembly (Includes Items # 1-3, 5-8, 11-15, F004, F005, F031, F216, F398, F517, F587 & F711)	1	F009	5/16-18 Whiz Locknut		6
10	8394-16	Jackshaft Clutch Spacer (1.625 x 1.128 x .465)	1	F013	3/8-16 Whiz Locknut		2
11	5270-3	Double Row Ball Bearing	1	F031	1/4-20 x 5/8 Hex Bolt		1
12	6207-19	1/8 NPT Plug	1	F034	5/16-18 x 3/4 Hex Bolt		2
13	8394-39	Jackshaft Swingarm (Includes Item # 12)	1	F039	3/8-16 x 1-1/4 Hex Bolt		1
14	6273-10	Jackshaft (Includes Items # 11 & 15)	1	F041	3/8-16 x 1-3/4 Hex Bolt		2
15	5270-5	Ball Bearing	1	F046	3/8-16 x 3-1/2 Hex Bolt		1
16	8394-19	Swingarm Pivot Plate	1	F051	3/8 SAE Washer		2
17	6325-3	Spacer Bushing (9/16)	1	F091	5/16-18 x 5/8 Hex Bolt		2
Engine Belt Tightener Assembly				F093	5/16-18 x 1 Hex Bolt		1
18	6345-7	Engine Idler Mount	1	F108	3/8-16 x 2 Hex Bolt		1
19	5245-7	Idler Pulley (5/V)	2	F149	1/4 x 1/4 x 1-1/2 Key		1
20	7240-6	Jackshaft Pulley (Includes Item # F149)	1	F169	5/16-18 x 1 Carriage Bolt		1
21	6230-3	Engine Belt (BB64)	1	F208	5/16-18 x 2-1/4 Hex Bolt		1
22	8394-17	Jackshaft Washer	1	F216	3/8-16 x 5-1/2 Hex Bolt		1
23	8237-11	Engine Pulley	1	F241	.375 x .875 x .10 Washer		1
24	M111	Hose (1/4 x 3/4")	1	F244	7/16-20 x 3/4 Hex Bolt		1
25	5221-1	Extension Spring (3/4 x 5)	1	F316	5/16-18 x 1-3/4 Hex Bolt		1
26	6358-14	Idler Weldment (Includes Items # 27 & 30)	1	F398	1/4-20 x 2 Hex Bolt		1
27	7201-3	Fiberglide Bearing	2	F517	Washer 3/8 x 1-1/8 x 1/8		1
28	5841	Retainer Washer (3/8 x 1-1/4)	1	F551	5/16-18 Flange Top Lock Nut		2
29	7201-7	Inner Race (2-5/8)	1	F570	3/8-16 Flange Top Lock Nut		3
30	5830	Grease Fitting	1	F587	3/8-16 Top Lock Flange Nut, Grade G		1
31	6358-11	Idler Arm Mount	1	F670	3/8-24 x 1 Hex Bolt Grade 8		1
PTO Drive Assembly				F685	1/4-20 x 1/2 SHC Screw		1
32	4401-4	Washer (1-3/4 x 3/8 x 1/4 Thk)	1	F695	1/4 x 1/4 x 7/8 Key		1
33	6231-1	PTO Drive Belt (B35K)	1	F711	1/4-20 x 6 Hex Bolt, Grade 5		1
34	7239-2	Blower Pulley (Includes Items # 32, F670 & F695)	1				
35	6410-1	Clutch	1				

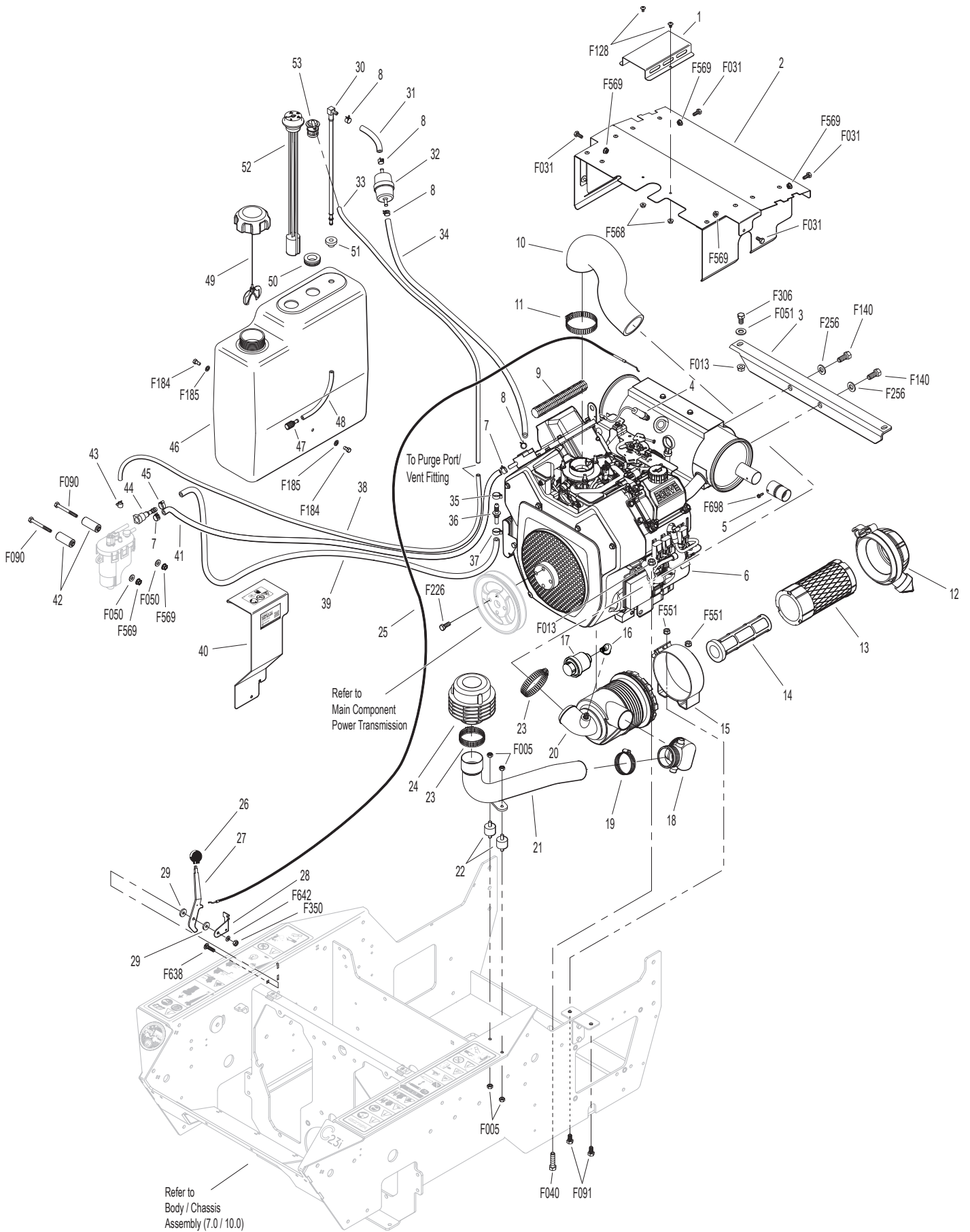
MAIN COMPONENT POWER TRANSMISSION



ENGINE GROUP

ITEM NO.	PART NO.	DESCRIPTION	NO. REQ'D	ITEM NO.	PART NO.	DESCRIPTION	NO. REQ'D
Engine Assembly				39	M246	Fuel Line (1/4 x 16-1/2")	1**
1	6013-41	Heat Shield O2 Cover (Includes Items # F128 & F568)	1	40	8018-9	Fuel Pump Module Cover	1
2	6013-38	Heat Shield (Includes Items # 1, F128 & F568)	1	41	M246	Fuel Line (1/4 x 3-1/2")	1**
3	6342-6	Motor Brace	1	42	8018-8	Fuel Module Standoff	2
4	NS	Sensor, Oxygen (Kohler)	1	43	5879-4	Hose Clamp (7/16)	1
5	8014-15	Extended Spark Arrestor	1	44	8046-17	Quick Coupler Straight (5/16 x 5/16)	1
6	NS	23 HP Engine, EFI (Kohler)	1	45	5879-5	Stepless Ear Clamp (5/8)	1
7	5879-2	Hose Clamp (7/16 Silver)	2	46	8055-1	Fuel Tank, 4.7 Gallon, Gas (Black) (Includes Items # 30, 47, 48 & 50-53)	1
8	5879-3	Hose Clamp (1/2)	4	47	5020-2	Fuel Filter, In Tank	1
9	8123-3	Insultherm (3/8 x 10)	1	48	5086-7	Hose (1/4 x 6)	1
Precleaner Assembly				49	5082-4	2-1/4 Ratchet Fuel Cap	1
10	6087-10	Air Intake Hose	1	50	5977-7	Roll Over Grommet (.900 x 1-1/2)	1
11	6029	Hose Clamp (1-13/16 to 2-3/4)	1	51	5083-1	Bushing, Rubber	1
12	2088-2	Air Cleaner Cap	1	52	8055-2	Fuel Tank Gauge	1
13	2090-1	Air Cleaner Cartridge	1	53	8043-8	Roll Over Valve	1
14	2090-3	Safety Filter Insert	1	Fasteners			
15	5088-3	Air Cleaner Band	1	F005	1/4-20 ESNA Nut		4
16	5091-16	Street Elbow 90° (1/8 x 1/8)	1	F013	3/8-16 Whiz Locknut		6
17	5091-18	Air Flow Indicator (Vacuum 15" H2O)	1	F031	1/4-20 x 5/8 Hex Bolt		4
18	2090-4	Low Profile Precleaner Elbow	1	F040	3/8-16 x 1-1/2 Hex Bolt		4
19	7840	Hose Clamp (1-5/16 to 2-1/4)	1	F050	1/4 SAE Washer		2
20	2090-21	Air Cleaner Assembly (Includes Items # 12-15)	*	F051	3/8 SAE Washer		2
21	7028-7	Precleaner Tube	1	F090	1/4-20 x 2-1/2 Hex Bolt		2
22	7432	Shock Mount (1.0 OD x .75)	2	F091	5/16-18 x 5/8 Hex Bolt		2
23	7840-5	Hose Clamp (1.56 to 2.50)	2	F128	10-24 x 3/8 PTHMS		2
24	7026-3	Remote Precleaner (Includes Item # 23)	1	F140	7/16-14 x 1 Hex Bolt		2
Throttle Assembly				F184	1/4-20 x 1/2 Hex Bolt, SS		2
25	5108-39	Throttle Cable (31")	1	F185	1/4 Internal Star Lock Washer, SS		2
26	5108-5	Throttle Control Knob, Red	1	F226	5/16-18 x 7/8 Hex Bolt		4
27	5108-20	Control Lever, Throttle	1	F256	7/16 SAE Washer		2
28	5108-21	Control Bracket	1	F306	3/8-16 x 3/4 Hex Bolt		2
29	5108-10	Friction Washer (.125)	2	F350	1/4-20 LP Nylock		1
Fuel Tank Assembly				F551	5/16-18 Flange Top Lock Nut		2
30	5083-8	Tank Tube (13")	1	F568	10-24 Flange Top Lock Nut		2
31	M246	Fuel Line (1/4 x 4")	1**	F569	1/4-20 Flange Top Lock Nut		6
32	5020-3	Fuel Filter, EFI (9-12 Micron)	*	F638	1/4-20 x 1 Carriage Bolt		1
33	M113	Fuel Line (3/16 x 10")	1**	F642	1/4 x .042 Belleville Washer		1
34	M246	Fuel Line (1/4 x 2-1/2")	1**	F698	#8 x 1/2 Hex Head Drilling Screw		2
35	5879-9	Stepless Ear Clamp, Black (15.7)	1	* Service Part Only			
36	8046-14	Quick Connector, Male (5/16)	1	** Required hose specifications:			
37	NS	Clamp (Kohler)	1	M113 - 3/16" ID fuel/oil/vapor hose (Gates 4219-0093 or equivalent)			
38	M113	Fuel Line (3/16 x 15-1/2")	1**	M246 - 1/4" ID low permeation (<15g/m^2/day) fuel hose (Parker 38904 or equivalent)			

ENGINE GROUP



Model C23i Beginning S/N 191079
Use only genuine Walker® replacement parts.

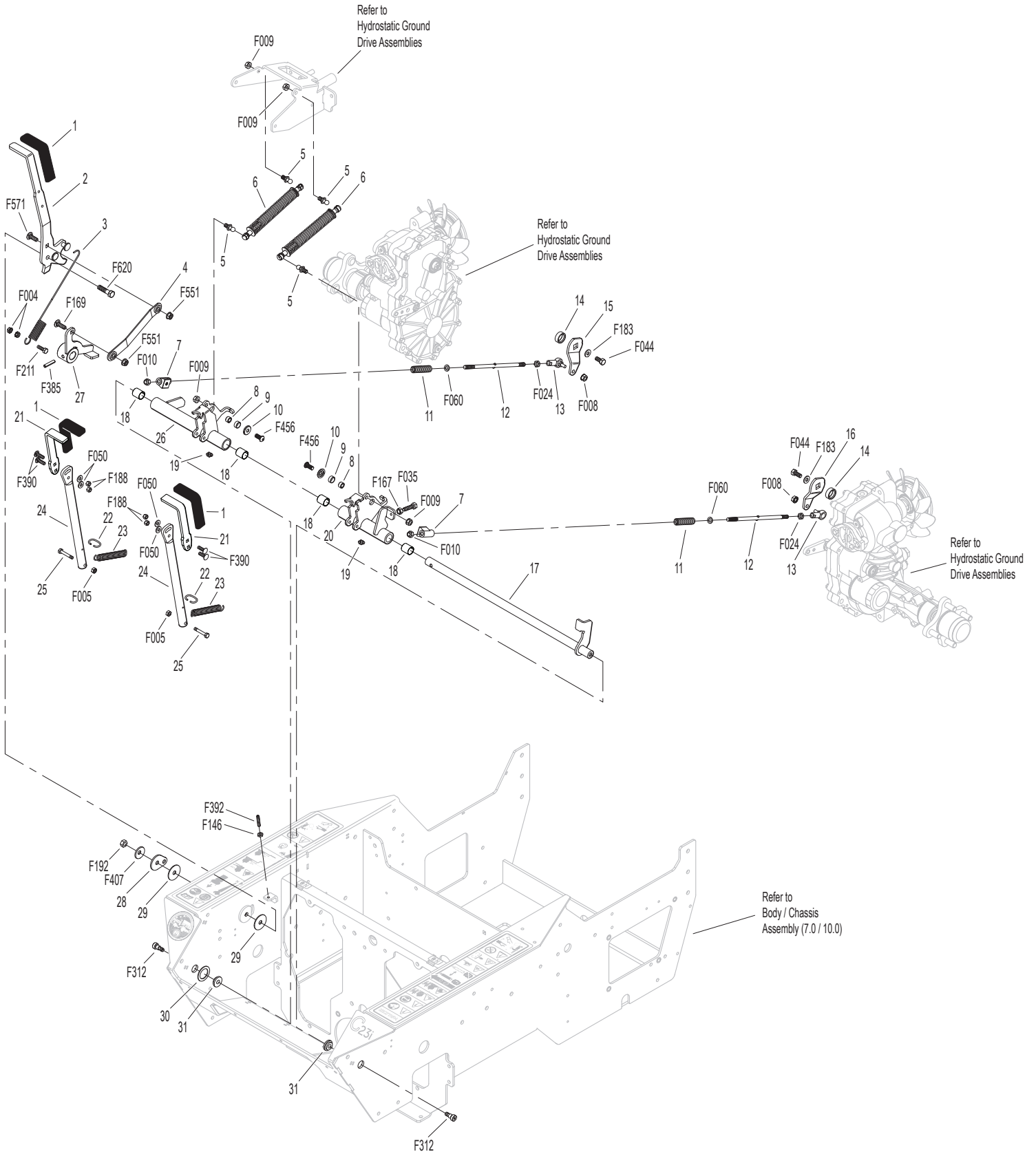
HYDROSTATIC GROUND DRIVE ASSEMBLIES

ITEM NO.	PART NO.	DESCRIPTION	NO. REQ'D	ITEM NO.	PART NO.	DESCRIPTION	NO. REQ'D	
Transaxle Reservoir Assembly				Wheel Assembly				
1	6215-33	Steering Dampener Mount	1	42	5075-3	LP Wheel & Tire Assembly (18 x 8.50-10)	2	
2	5830	Grease Fitting	2		5075-2	LP Tire (18 x 8.50-10)	*	
3	7364-3	Idler Spring Bushing	1		5075-5	LP Wheel (10 x 7)	*	
4	7364-2	Torsion Spring	1	Fasteners				
5	2025-17	Straight Thread Hose Fitting	2		F005	1/4-20 ESNA Nut	2	
6	5879-2	Hose Clamp (7/16 Silver)	4		F009	5/16-18 Whiz Locknut	6	
7	M111	Hose (1/4 x 9-3/4")	1**		F013	3/8-16 Whiz Locknut	5	
8	4023-3	Oil Expansion Reservoir	1		F015	1/2-20 Wheel Lug Nut	8	
9	M111	Hose (1/4 x 10-3/4")	1**		F029	1/4-20 x 1/2 Hex Bolt	1	
Ground Drive Assemblies						F032	1/4-20 x 3/4 Hex Bolt	2
10	4026-13	Hydro Pulley Fan	2		F034	5/16-18 x 3/4 Hex Bolt	2	
11	4026-18	Pulley (Includes Items # 10, 12, & 14)	2		F041	3/8-16 x 1-3/4 Hex Bolt	1	
12	5025-19	Hydro Fan Nut	2		F042	3/8-16 x 2-1/4 Hex Bolt	2	
13	5245	Idler Pulley (3")	1		F050	1/4 SAE Washer	2	
14	NS	Hydro Fan Washer	2		F051	3/8 SAE Washer	1	
15	4407-4	Bow Tie Cotter Pin	4		F067	3/16 x 3/16 x 1 Key	1	
16	2028-5	Lockout Arm, LH	1		F182	1/4 x 5/8 x 1/8 Washer	4	
17	5025-44	Hydro-Gear ZT-3100, LH	1		F312	3/8 x 3/8 Shoulder Bolt	2	
18	2026-17	Hydro-Gear Oil Filter	2		F350	1/4-20 LP Nylock	2	
19	9430-1	Spacer Tube	4		F388	3/8-16 x 2-1/2 Hex Bolt	2	
20	6232-10	Ground Drive Idler	1		F438	5/16-18 x 2-3/4 Hex Bolt	1	
21	6325-2	Spacer Bushing (5/16)	1		F533	Socket Cap Bolt, 5/16-18 x 3-1/2	4	
22	4240-1	Drive Pulley (Includes Items # F067 & F718)	1		F551	5/16-18 Flange Top Lock Nut	1	
23	6232-1	Ground Drive Belt (AX47 X5)	1		F582	Washer 5/16 x 7/8 x .125	1	
24	5026-44	Hydro-Gear ZT-3100, RH	1		F718	5/16-18 x 5/16 Set Screw (Knurl Point)	2	
25	2028-6	Lockout Arm, RH	1	* Service Part Only				
Parking Brake Assembly				** Required hose specifications: M111 - 1/4" ID fuel/oil/vapor hose (Gates 4219-0103 or equivalent)				
26	4215-13	Dampener	1					
27	5146	10mm Ball Stud	2					
28	5281-2	Clevis Pin (5/16 x 7/8)	2					
29	5270-2	Ball Bearing	1					
30	7201-11	Inner Race (1.938)	1					
31	7406-14	Parking Brake Lever (Includes Item # 2)	1					
32	7406-1	Handle Grip, Red	1					
33	7406-12	Bearing Retainer / Spacer	1					
34	9704-3	Pivot Rod Bushing / Plastic	2					
35	5227-1	Extension Spring (1/2 x 4)	1					
36	5280-4	Clevis Fork	2					
37	5665-1	Compression Spring (2-1/2)	2					
38	5463	Steering Lever Actuator	2					
39	4303-7	Clutch Actuator Bolt (5/16)	2					
40	7406-11	Parking Brake Cross Shaft	1					
41	7406-13	Parking Brake Cross Shaft Bracket	1					

STEERING CONTROL ASSEMBLIES

ITEM NO.	PART NO.	DESCRIPTION	NO. REQ'D	ITEM NO.	PART NO.	DESCRIPTION	NO. REQ'D
Steering Lever & FSC Assemblies				Fasteners			
1	5850-2	Handle Grip, Foam (5-1/2)	3	F004	1/4-20 Keps Nut		2
2	4170-2	FSC Lever	1	F005	1/4-20 ESNA Nut		2
3	4219-1	Extension Spring	1	F008	5/16-24 Keps Nut		2
4	4170-3	FSC Linkage	1	F009	5/16-18 Whiz Locknut		4
5	5146	10mm Ball Stud	4	F010	5/16-24 ESNA Nut		2
6	4199-4	Steering Lever Dampener Assembly	2	F024	5/16-24 Jam Nut		2
7	5463-4	Steering Lever Actuator	2	F035	5/16-18 x 1-1/4 Hex Bolt		1
8	5463-5	Steering Arm Pivot Bushing (SS)	2	F044	5/16-24 x 3/4 Hex Bolt		2
9	7201-2	Fiberglide Bearing (1/2")	2	F050	1/4 SAE Washer		4
10	4215-14	Step Washer	2	F060	AN960516 Washer		2
11	5665-1	Compression Spring (2-1/2)	2	F146	1/4-20 Jam Nut		1
12	5213-7	Control Rod (8-3/8)	2	F167	5/16-18 Hex Nut		1
13	5214-2	Ball Joint (5/16-24) (Nylon Lined)	2	F169	5/16-18 x 1 Carriage Bolt		1
14	2212-3	Seal Retainer	2	F183	.312 x .700 x .074 Washer		2
15	6212-8	Transmission Control Arm, RH	1	F188	1/4-20 Self-Locking Nut		4
16	6212-9	Transmission Control Arm, LH	1	F192	3/8-24 Self-Locking Nut		1
17	6451-7	Steering Pivot Shaft W/Stop	1	F211	1/4-20 x 7/8 Hex Bolt		1
18	8201-3	Fiberglide Bearing	4	F312	3/8 x 3/8 Shoulder Bolt		2
19	5830	Grease Fitting	2	F385	1/4 x 1-1/4 Roll Pin		1
20	6451-5	Speed Control Actuator, LH (Includes Items # 18 & 19)	1	F390	1/4-20 x 7/8 Carriage Bolt		4
21	5453-14	Steering Lever Handle, Adjustable (Includes Items # 1, F050, F188 & F390)	2	F392	1/4-20 x 1 Set Screw/SS Cup Point		1
22	5450	D-Clip	2	F407	Belleville Washer 3/8 x 1.187, SS		1
23	5222	Extension Spring (1/2 x 3-1/4)	2	F456	5/16-18 x 3/4 SBH Cap Screw, SS		2
24	6452-1	Steering Lever Tube W/Tab	2	F551	5/16-18 Flange Top Lock Nut		2
25	4452-6	Steering Pivot (1/4-20 x 1-5/8)	2	F571	5/16-18 x 7/8 Carriage Bolt		1
26	6451-10	Speed Control Actuator, RH (Includes Items # 18 & 19)	1	F620	3/8-24 x 1-1/2 Hex Bolt		1
27	6451-9	FSC Friction Actuator	1				
28	4142-1	FSC Cam	1				
29	5141	FSC Friction Washer (1-1/2 x 3/8 x 1/16)	2				
30	4142-2	FSC Friction Washer (1-1/2 x 1-1/32 x 1/16)	1				
31	9704-3	Pivot Rod Bushing / Plastic	2				

STEERING CONTROL ASSEMBLIES

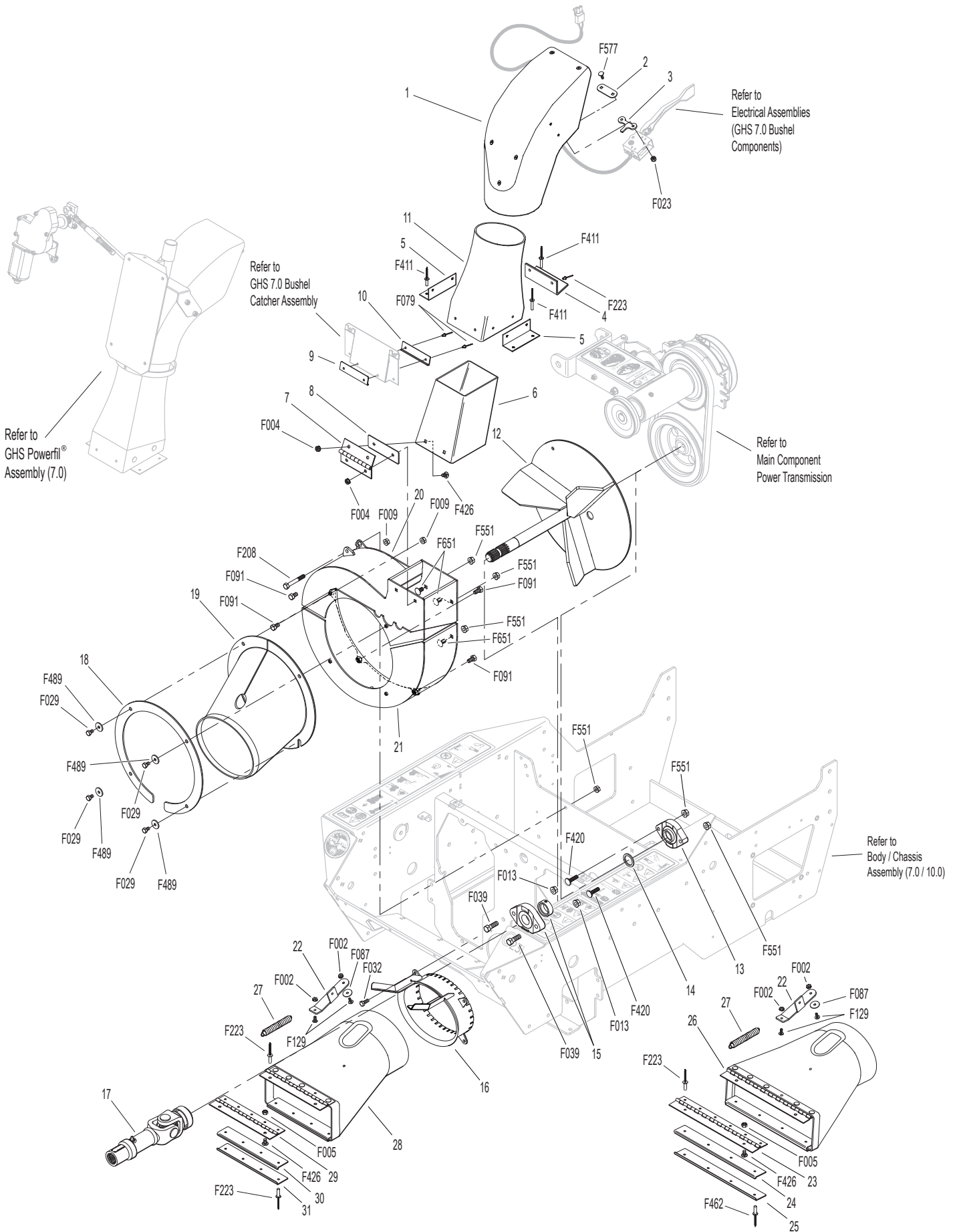


Model C23i Beginning S/N 191079
 Use only genuine **Walker®** replacement parts.

GHS GROUP (7.0)

ITEM NO.	PART NO.	DESCRIPTION	NO. REQ'D	ITEM NO.	PART NO.	DESCRIPTION	NO. REQ'D
Delivery Chute Assembly				Fasteners			
1	5515-4	Elbow Delivery Spout	1	F002		10-24 Keps Nut	2
2	5592-24	Backing Plate, Grass-Pak® Switch	1	F004		1/4-20 Keps Nut	4
3	5592-23	Grass-Pak® Housing Spacer	1	F005		1/4-20 ESNA Nut	2
4	5578	Rear Clip, Chute Mount	1	F009		5/16-18 Whiz Locknut	2
5	5577	Side Clip, Chute Mount	2	F013		3/8-16 Whiz Locknut	2
6	6530-7	Body Chute	1	F023		10-24 ESNA Nut	2
7	7504-7	Hinge (4")	1	F029		1/4-20 x 1/2 Hex Bolt	4
8	7504-10	Hinge Spacer	1	F032		1/4-20 x 3/4 Hex Bolt	4
9	7511-5	Outside Chute Cover Lip	1	F039		3/8-16 x 1-1/4 Hex Bolt	2
10	7511-4	Inside Chute Cover Lip	1	F079		A/A66D Aluminum Pop Rivet	2
11	5511-3	Delivery Chute W/Clips (Includes Items # 4, 5, F223 & F411)	1	F087		#10 x 7/8 Fender Washer	1
				F091		5/16-18 x 5/8 Hex Bolt	4
				F129		10-24 x 1/2 PTHMS	2
				F208		5/16-18 x 2-1/4 Hex Bolt	1
				F223		3/16 x 5/16 Semi-Tube Rivet	12
				F411		3/16 Bulbex Rivet	6
				F420		5/16-18 x 1-1/4 Carriage Bolt	2
				F426		1/4-20 x 1/2 Carriage Bolt	6
				F462		3/16 x .468 (+/- .010) Semi-Tube Rivet	4
				F489		Washer 1/4 x 7/8 x .090	4
				F551		5/16-18 Flange Top Lock Nut	6
				F577		10-24 x 5/8 Carriage Bolt	2
				F651		5/16-18 x 5/8 Carriage Bolt, Gr 2	3
				* Used with DC48 deck only			
				** Used with all other decks			
Blower Assembly							
12	6545-16	Blower Wheel	1				
13	6349-9	Flanged Bearing (1")	1				
14	6545-8	Blower Spacer	1				
15	4349-14	Flanged Bearing (1") Machine Flat	1				
16	5526-10	Receiver Cone	1				
17	7275-3	U-Joint Tube, Splined	1				
18	6543-13	Blower Faceplate Ring	1				
19	5794-8	Fixed Chute	1				
20	6543-16	Blower Weldment, Top	1				
21	6543-17	Blower Weldment, Bottom	1				
Deck Chute Assemblies							
22	8678-5	Spring Mount, Chute	1				
23	7726	Chute Hinge (2 x 11)	1				
24	7755-1	Chute Lip, Top	1				
25	7755-2	Chute Lip, Bottom	1				
26	7794-2	Discharge Chute W/Spring Mount (C23i / Wide) (Includes Items # 22-25, F223 & F462)	1*				
27	8677	Extension Spring (1 x 6-1/16)	1				
28	5794-11	Discharge Chute W/Spring Mount (C23i / Narrow) (Includes Items # 22, 29-31 & F223)	1**				
29	5726	Chute Hinge (2 x 8)	1				
30	5755-2	Chute Lip, Top	1				
31	5755-3	Chute Lip, Bottom	1				

GHS GROUP (7.0)

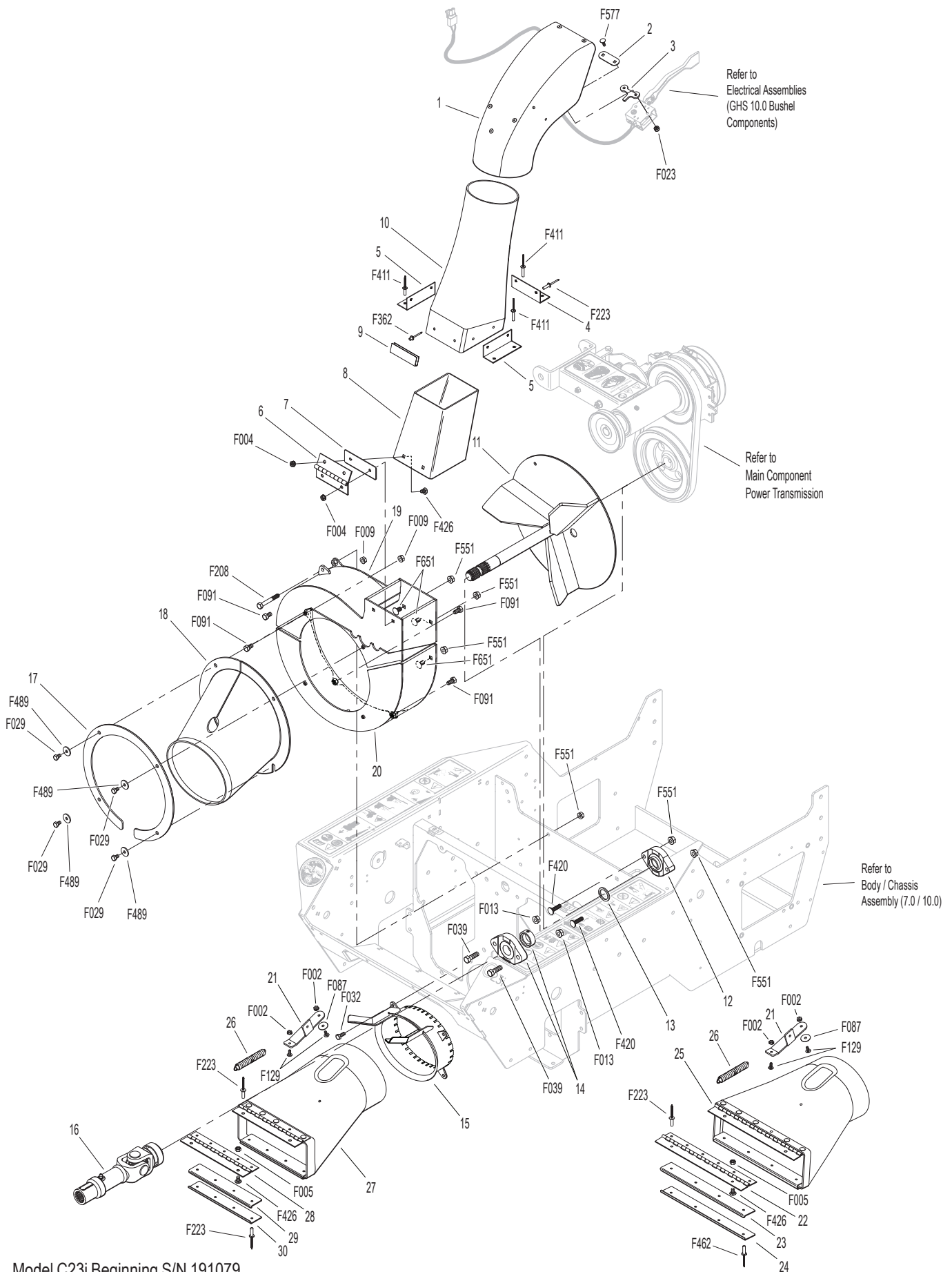


Model C23i Beginning S/N 191079
 Use only genuine **Walker®** replacement parts.

GHS GROUP (10.0)

ITEM NO.	PART NO.	DESCRIPTION	NO. REQ'D	ITEM NO.	PART NO.	DESCRIPTION	NO. REQ'D
Delivery Chute Assembly				Fasteners			
1	5515-4	Elbow Delivery Spout	1	F002		10-24 Keps Nut	2
2	5592-24	Backing Plate, Grass-Pak® Switch	1	F004		1/4-20 Keps Nut	4
3	5592-23	Grass-Pak® Housing Spacer	1	F005		1/4-20 ESNA Nut	2
4	5578	Rear Clip, Chute Mount	1	F009		5/16-18 Whiz Locknut	6
5	5577	Side Clip, Chute Mount	2	F013		3/8-16 Whiz Locknut	2
6	7504-7	Hinge (4")	1	F023		10-24 ESNA Nut	2
7	7504-10	Hinge Spacer	1	F029		1/4-20 x 1/2 Hex Bolt	4
8	6530-7	Body Chute	1	F032		1/4-20 x 3/4 Hex Bolt	4
9	5578-10	Front Clip, Chute Mount	1	F039		3/8-16 x 1-1/4 Hex Bolt	2
10	8511-1	Delivery Chute W/Clips (Includes Items # 4, 5, 9, F362 & F411)	1	F087		#10 x 7/8 Fender Washer	1
				F091		5/16-18 x 5/8 Hex Bolt	4
				F129		10-24 x 1/2 PTHMS	2
				F208		5/16-18 x 2-1/4 Hex Bolt	1
				F223		3/16 x 5/16 Semi-Tube Rivet	14
				F362		A/A62D Alum. Pop Rivet (3/16D x 13/32L)	2
				F411		3/16 Bulbex Rivet	6
				F420		5/16-18 x 1-1/4 Carriage Bolt	2
				F426		1/4-20 x 1/2 Carriage Bolt	6
				F462		3/16 x .468 (+/- .010) Semi-Tube Rivet	4
				F489		Washer 1/4 x 7/8 x .090	4
				F551		5/16-18 Flange Top Lock Nut	6
				F577		10-24 x 5/8 Carriage Bolt	2
				F651		5/16-18 x 5/8 Carriage Bolt, Gr 2	3
Blower Assembly				* Used with DC48 deck only			
11	6545-16	Blower Wheel	1	** Used with all other decks			
12	6349-9	Flanged Bearing (1")	1				
13	6545-8	Blower Spacer	1				
14	4349-14	Flanged Bearing (1") Machine Flat	1				
15	5526-10	Receiver Cone	1				
16	7275-3	U-Joint Tube, Splined	1				
17	6543-13	Blower Faceplate Ring	1				
18	5794-8	Fixed Chute	1				
19	6543-16	Blower Weldment, Top	1				
20	6543-17	Blower Weldment, Bottom	1				
Deck Chute Assemblies							
21	8678-5	Spring Mount, Chute	1				
22	7726	Chute Hinge (2 x 11)	1				
23	7755-1	Chute Lip, Top	1				
24	7755-2	Chute Lip, Bottom	1				
25	7794-2	Discharge Chute W/Spring Mount (C23i / Wide) (Includes Items # 21-24, F223 & F462)	1*				
26	8677	Extension Spring (1 x 6-1/16)	1				
27	5794-11	Discharge Chute W/Spring Mount (C23i / Narrow) (Includes Items # 21, 28-30 & F223)	1**				
28	5726	Chute Hinge (2 x 8)	1				
29	5755-2	Chute Lip, Top	1				
30	5755-3	Chute Lip, Bottom	1				

GHS GROUP (10.0)

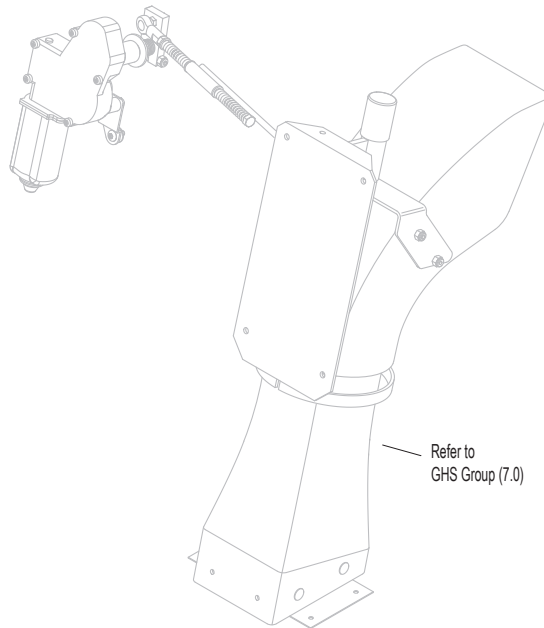
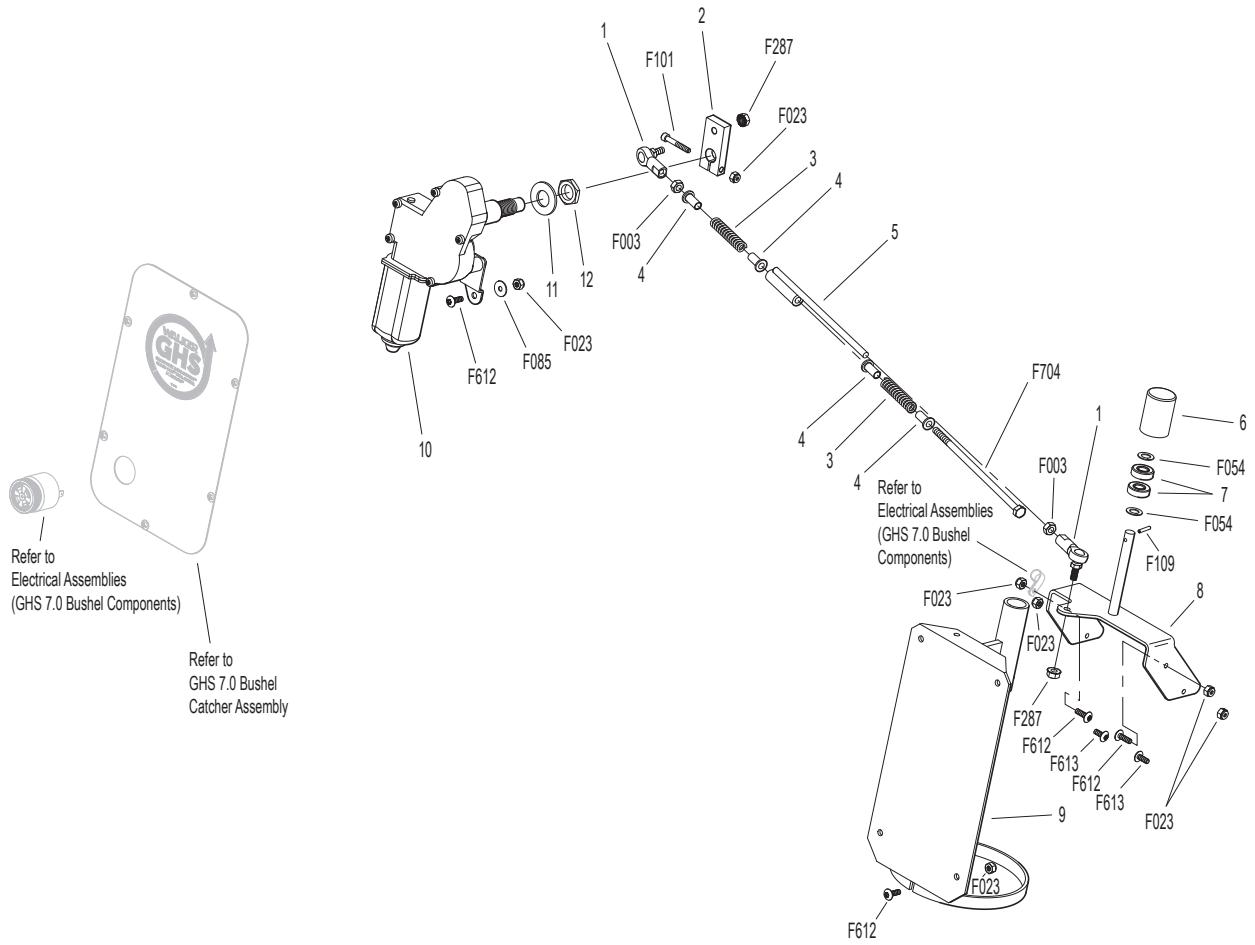


Model C23i Beginning S/N 191079
 Use only genuine Walker® replacement parts.

GHS POWERFIL® ASSEMBLY (7.0)

ITEM NO.	PART NO.	DESCRIPTION	NO. REQ'D	ITEM NO.	PART NO.	DESCRIPTION	NO. REQ'D
7.0 GHS Powerfil® Assembly				Fasteners			
1	5552	Ball Joint (1/4-28)	2	F003		1/4-28 Hex Nut	2
2	5554	Actuator Arm	1	F023		10-24 ESNA Nut	10
3	5553-1	Compression Spring (1/2 x 2)	2	F054		AN960616 Washer	2
4	5553-3	Bushing, Powerfil® Actuator	4	F085		3/16 Rivet Backup Washer	1
5	5558-2	Powerfil® Actuator Rod	1	F101		10-24 x 1-1/4 SHC Screw	1
	5549	Actuator Rod Assembly (Includes Items # 1, 3-5, F003, F287 & F704)	*	F109		1/8 x 5/8 Roll Pin	1
6	5551-3	Bearing Cap, Powerfil®	1	F287		1/4-28 Keps Nut	2
7	5551-1	Pivot Bearing (#S3PP)	2	F612		10-24 x 5/8 Truss Head Torx	7
8	5518-6	Pivot, Delivery Spout	1	F613		10-24 x 1/2 Truss Head Torx	2
9	5517-2	Pivot Mount	1	F704		1/4-28 x 6-1/2 Hex Bolt Grade 5, Clear Zinc	1
10	5519-5	Actuator Motor (12V) (Includes Items # 11 & 12)	1	* Service Part Only			
11	5519-2	Motor Mount Washer	*				
12	5519-3	Motor Mount Nut (5/8-24)	*				

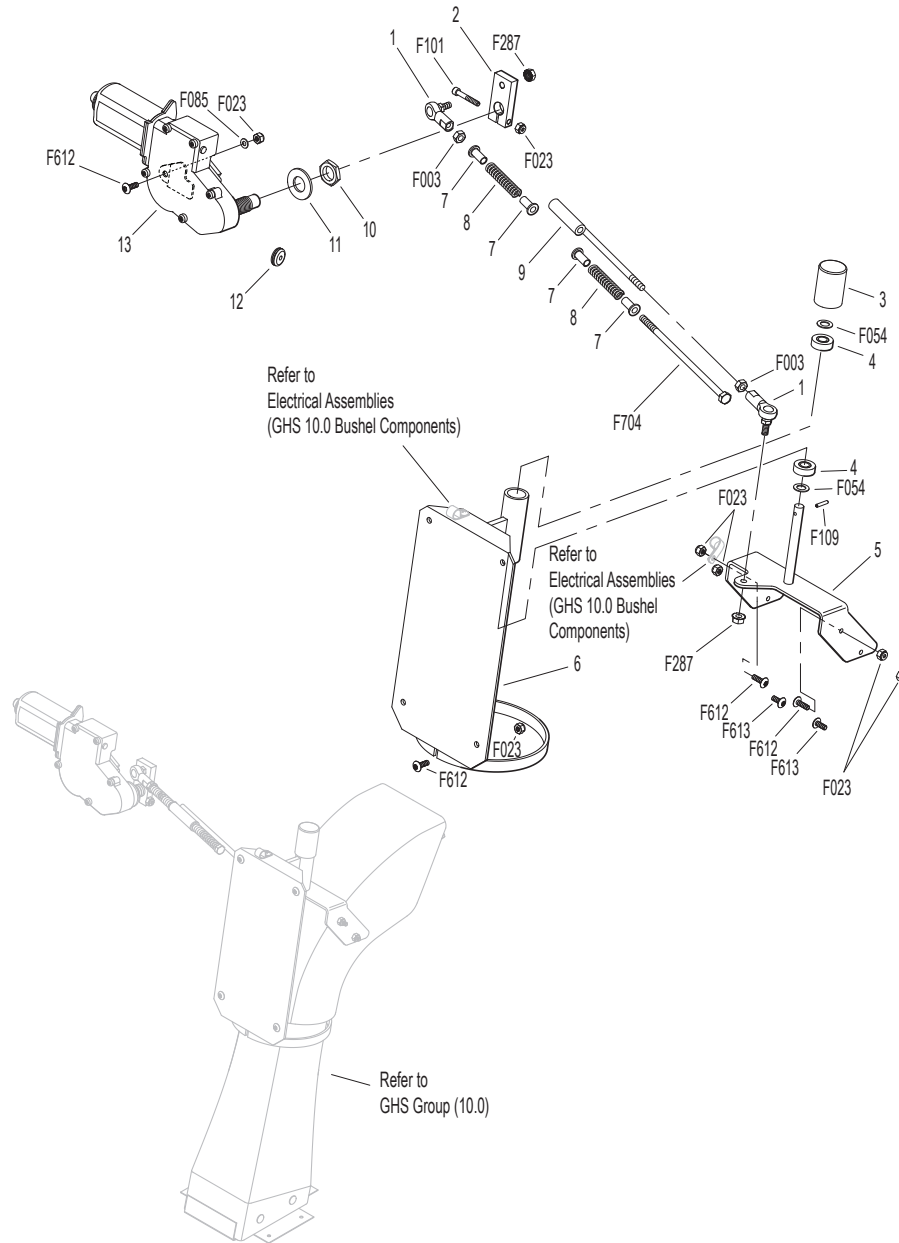
GHS POWERFIL® ASSEMBLY (7.0)



GHS POWERFIL® ASSEMBLY (10.0)

ITEM NO.	PART NO.	DESCRIPTION	NO. REQ'D	ITEM NO.	PART NO.	DESCRIPTION	NO. REQ'D
10.0 GHS Powerfil® Assembly				Fasteners			
1	5552	Ball Joint (1/4-28)	2	F003		1/4-28 Hex Nut	2
2	5554	Actuator Arm	1	F023		10-24 ESNA Nut	10
3	5551-3	Bearing Cap, Powerfil®	1	F054		AN960616 Washer	1
4	5551-1	Pivot Bearing (#S3PP)	2	F085		3/16 Rivet Backup Washer	1
5	5518-6	Pivot, Delivery Spout	1	F101		10-24 x 1-1/4 SHC Screw	1
6	5517-2	Pivot Mount	1	F109		1/8 x 5/8 Roll Pin	1
7	5553-3	Bushing, Powerfil® Actuator	4	F287		1/4-28 Keps Nut	2
8	5553-1	Compression Spring (1/2 x 2)	2	F612		10-24 x 5/8 Truss Head Torx	7
9	5558-2	Powerfil® Actuator Rod	1	F613		10-24 x 1/2 Truss Head Torx	2
	5549	Actuator Rod Assembly (Includes Items # 1, 7-9, F003, F287 & F704)	*	F704		1/4-28 x 6-1/2 Hex Bolt Grade 5, Clear Zinc	1
10	5519-3	Motor Mount Nut (5/8-24)	*	* Service Part Only			
11	5519-2	Motor Mount Washer	*				
12	5976-2	Grommet (3/16 x 3/4)	1				
13	5519-5	Actuator Motor (12V) (Includes Items # 10 & 11)	1				

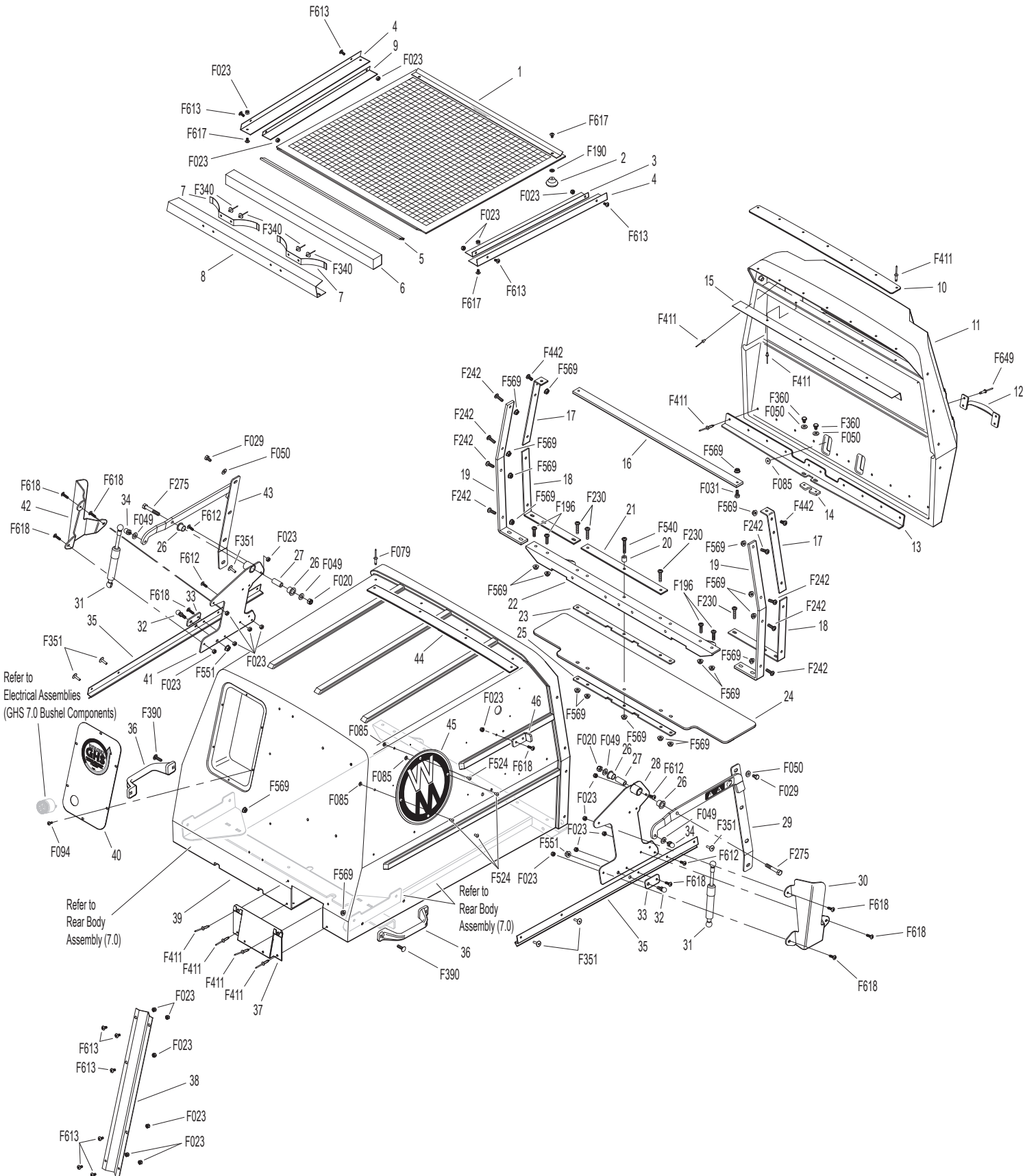
GHS POWERFIL® ASSEMBLY (10.0)



GHS 7.0 BUSHEL CATCHER ASSEMBLY

ITEM NO.	PART NO.	DESCRIPTION	NO. REQ'D	ITEM NO.	PART NO.	DESCRIPTION	NO. REQ'D
Upper Baffle Screen Assembly (Removable)				40	7607-8	Powerfil® Cover Plate	1
1	7512-12	Removable Screen (3/16 Hole) (Includes Items # 2, F190 & F617)	1**	41	7608-4	Hinge Plate, RH	1
2	7506	Knob / Threaded Insert (10-24)	2	42	8155-8	7.0 Gas Spring Cover, RH	1
3	7509-7	Channel Top, LH	1	43	7607-14	Catcher Door Arm, RH	1
4	8606-2	Channel Bottom	2	44	7584-3	Reinforcing Strap	1
5	6856-1	Edge Molding (21-3/4")	1	45	5801-4	Decal Plate, Round	2
6	6507	Screen Seal (23-1/4")	1	46	7608-5	Door Arm Stop	2
7	7505	Mustache Spring	2	5598-2 Optional Dump Bag (Not Shown)			
8	7509-6	C-Channel With Spring (Includes Items # 7 & F340)	1	May be ordered as an option. Contact your Walker dealer.			
9	7509-8	Channel Top, RH	1	Fasteners			
7.0 Exhaust Deflector Door Assembly					F020	5/16-18 ESNA Nut	2
10	7607-3	Upper Door Seal	1	F023	10-24 ESNA Nut	28	
11	7510-4	7.0 Catcher Box Door (Includes Frame) (Includes Items # 10, 12, 13, 15, F085, F411 & F649)	1	F029	1/4-20 x 1/2 Hex Bolt	2	
12	5583	Handle	1	F031	1/4-20 x 5/8 Hex Bolt	2	
13	7607-6	Lower Door Stiffener (7.0)	1	F049	5/16 SAE Washer	4	
14	8607-8	Door Guide	1	F050	1/4 SAE Washer	4	
15	7607-5	Upper Door Stiffener	1	F079	A/A66D Aluminum Pop Rivet	4	
GHS 7.0 Bushel Catcher Assembly				F085	3/16 Rivet Backup Washer	12	
16	7503-8	Center Strap (7.0)	1	F094	8-32 x 1/2 PTHMS	6	
17	7503-6	Upper Frame Doubler (7.0)	2	F190	#10 Internal Star Lock Washer	2	
18	7503-5	Lower Frame Doubler (7.0)	2	F196	1/4-20 x 1 PPHMS, SS	4	
19	7503-4	Outside Box Strap (7.0)	2	F230	1/4-20 x 1-1/4 PPHMS, SS	4	
20	8608-11	Catcher Door Finger	1	F242	1/4-20 x 7/8 PPHMS, SS	8	
21	8608-4	Center Frame Doubler	1	F275	5/16-18 x 2 Hex Bolt	2	
22	7503-11	Catcher Mount	1	F340	Rivet, Aluminum	4	
23	7610-4	Catcher Dump Flap Spacer (7.0)	1	F351	Aluminum Pop Rivet	6	
24	7610-9	Catcher Dump Flap (7.0)	1	F360	1/4-20 x 3/8 Hex Bolt	2	
25	8610-3	Backing Plate / Dump Flap	1	F390	1/4-20 x 7/8 Carriage Bolt	4	
26	7620-3	Pivot Bushing (1/2 x 9/16)	4	F411	3/16 Bulbex Rivet	32	
27	7607-7	Bushing	2	F442	1/4-20 x 5/8 PTHMS	2	
28	7608-3	Hinge Plate, LH	1	F524	3/16 x 3/8 Aluminum Rivet, Black	8	
29	7607-15	Catcher Door Arm, LH	1	F540	1/4-20 x 1-3/4 PPHMS, SS	1	
30	8155-7	7.0 Gas Spring Cover, LH	1	F551	5/16-18 Flange Top Lock Nut	2	
31	5155-5	Gas Spring	2	F569	1/4-20 Flange Top Lock Nut	25	
32	5155-13	10mm Ball Stud, 5/16-18 3/4 Thread	2	F612	10-24 x 5/8 Truss Head Torx	4	
33	5523-6	Gas Spring Plate	2	F613	10-24 x 1/2 Truss Head Torx	10	
34	5155-12	5/16 Ball Stud	2	F617	10-24 x 3/8 Truss Head Torx	4	
35	5155-15	Box Support, Gas Spring	2	F618	10-24 x 3/4 Truss Head Torx	12	
36	7532-1	Handle, Catcher Lift	2	F649	3/16 x .510/.625 Grip Range Rivet, SS	4	
37	7511-6	Chute Cover	1	* Service Part Only			
38	7557-1	7.0 Wire Harness Channel	1	** This screen can be replaced by P/N 7512-13 Removable Screen (3/4" holes) for improved air flow performance in wet conditions.			
39	7510-3	7.0 Bushel Catcher Box	1				
	7502-6	7.0 Catcher W/Powerfil® (Includes Door)	*				

GHS 7.0 BUSHEL CATCHER ASSEMBLY

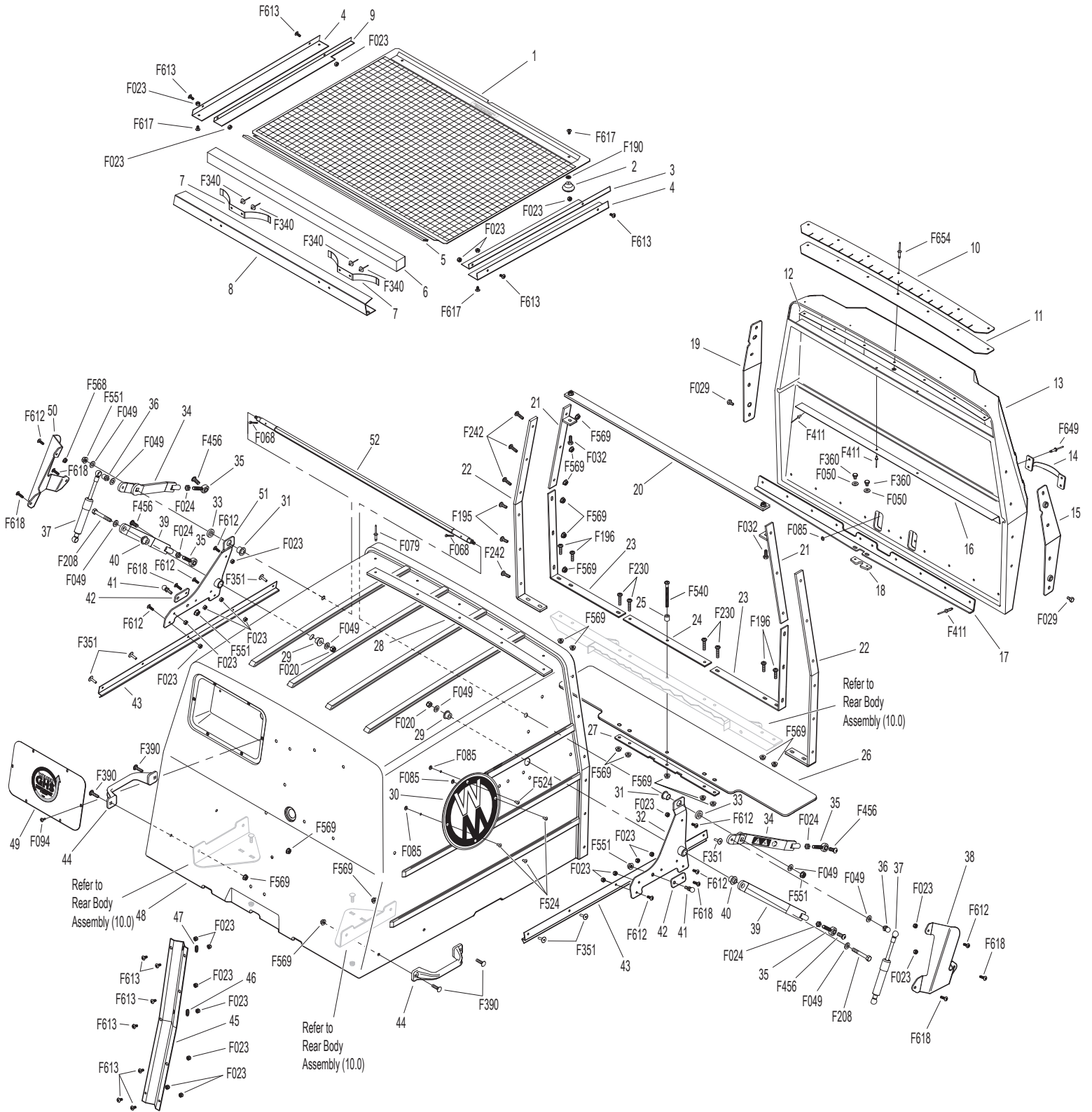


Model C23i Beginning S/N 191079
 Use only genuine **Walker®** replacement parts.

GHS 10.0 BUSHEL CATCHER ASSEMBLY

ITEM NO.	PART NO.	DESCRIPTION	NO. REQ'D	ITEM NO.	PART NO.	DESCRIPTION	NO. REQ'D
Upper Baffle Screen Assembly (Removable)				46	5976-2	Grommet (3/16 x 3/4)	1
1	7512-8	Removable Screen (3/16 Hole) (Includes Items # 2, 5, F190 & F617)	1**	47	5977-3	Grommet (9/16)	1
2	7506	Knob / Threaded Insert (10-24)	2	48	8602-3	10.0 Catcher W/O Powerfil®, Gray (Includes Door)	*
3	8606-3	Channel Top, LH	1		8602-4	10.0 Catcher W/Powerfil®, Gray (Includes Door)	*
4	8606-2	Channel Bottom	2		8610-5	10.0 Bushel Catcher Box, Gray	*
5	7856-1	Edge Molding (26")	1	49	8607-9	Powerfil® Cover Plate	1
6	7507	Screen Seal (27-1/2)	1	50	8155-2	Gas Spring Cover, RH	1
7	7505	Mustache Spring	2	51	8608-8	Hinge Plate, RH	1
8	8606	C-Channel (10.0)	1	52	8608-9	Torsion Bar	1
	8606-20	C-Channel With Spring (10.0) (Includes Items # 7, 8 & F340)	*	5598-2 Optional Dump Bag (Not Shown) May be ordered as an option. Contact your Walker dealer.			
9	8606-4	Channel Top, RH	1	Fasteners			
10.0 Exhaust Deflector Door Assembly					F020	5/16-18 ESNA Nut	2
10	8607-16	Upper Seal Support	1		F023	10-24 ESNA Nut	29
11	8607-17	Upper Door Seal	1		F024	5/16-24 Jam Nut	4
12	8607-18	Backup Plate	1		F029	1/4-20 x 1/2 Hex Bolt	8
13	8512-4	10.0 Catcher Box Door, Gray (Includes Items # 10-14, 16, 17, F085, F411, F649 & F654)	1		F032	1/4-20 x 3/4 Hex Bolt	2
14	5583	Handle	1		F049	5/16 SAE Washer	8
15	8607-1	Door Mount, LH	1		F050	1/4 SAE Washer	2
16	8607-12	Upper Door Stiffener	1		F068	1/8 x 1 Cotter Pin	2
17	8607-7	Lower Door Stiffener	1		F079	A/A66D Aluminum Pop Rivet	5
18	8607-8	Door Guide	1		F085	3/16 Rivet Backup Washer	10
19	8607-2	Door Mount, RH	1		F094	8-32 x 1/2 PTHMS	6
GHS 10.0 Bushel Catcher Assembly					F190	#10 Internal Star Lock Washer	2
20	8608-13	Center Strap	1		F195	1/4-20 x 3/4 PPHMS, SS	4
21	8608-3	Upper Frame Doubler	2		F196	1/4-20 x 1 PPHMS, SS	4
22	8608-1	Outside Box Strap	2		F208	5/16-18 x 2-1/4 Hex Bolt	2
23	8608-2	Lower Frame Doubler	2		F230	1/4-20 x 1-1/4 PPHMS, SS	4
24	8608-4	Center Frame Doubler	1		F242	1/4-20 x 7/8 PPHMS, SS	8
25	8608-11	Catcher Door Finger	1		F340	Rivet, Aluminum	4
26	8610-8	Catcher Dump Flap	1		F351	Aluminum Pop Rivet	6
27	8610-3	Backing Plate, Dump Flap	1		F360	1/4-20 x 3/8 Hex Bolt	2
28	7584	Reinforcing Strap	1		F390	1/4-20 x 7/8 Carriage Bolt	4
29	5103-5	Pivot Bushing Inner	2		F411	3/16 Bulbex Rivet	21
30	5801-4	Decal Plate, Round	2		F456	5/16-18 x 3/4 SBH Cap Screw, SS	4
31	7620-3	Pivot Bushing (1/2 x 9/16)	2		F524	3/16 x 3/8 Aluminum Rivet, Black	8
32	8608-7	Hinge Plate, LH	1		F540	1/4-20 x 1-3/4 PPHMS, SS	1
33	5103-7	Outside Torsion Bushing	2		F551	5/16-18 Flange Top Lock Nut	4
34	8607-4	Upper Arm	2		F568	10-24 Flange Top Lock Nut	1
35	5214-12	Ball Joint (5/16-24)	4		F569	1/4-20 Flange Top Lock Nut	27
36	5155-12	5/16 Ball Stud	2		F612	10-24 x 5/8 Truss Head Torx	8
37	5155-4	Gas Spring	2		F613	10-24 x 1/2 Truss Head Torx	11
38	8155-1	Gas Spring Cover, LH	1		F617	10-24 x 3/8 Truss Head Torx	4
39	8607-3	Lower Arm	2		F618	10-24 x 3/4 Truss Head Torx	6
40	5103-6	Pivot Bushing Outer	2		F649	3/16 x .510/.625 Grip Range Rivet, SS	4
41	5155-13	10mm Ball Stud, 5/16-18 3/4 Thread	2		F654	3/16 x .510/.625 Grip Range Rivet	7
42	5523-6	Gas Spring Plate	2	*	Service Part Only		
43	8608-10	Box Support, Gas Spring	2	**	This screen can be replaced by P/N 7512-11 Removable Screen (3/4" holes) for improved air flow performance in wet conditions.		
44	7532-1	Handle, Catcher Lift	2				
45	8117	Wire Harness Channel	1				

GHS 10.0 BUSHEL CATCHER ASSEMBLY

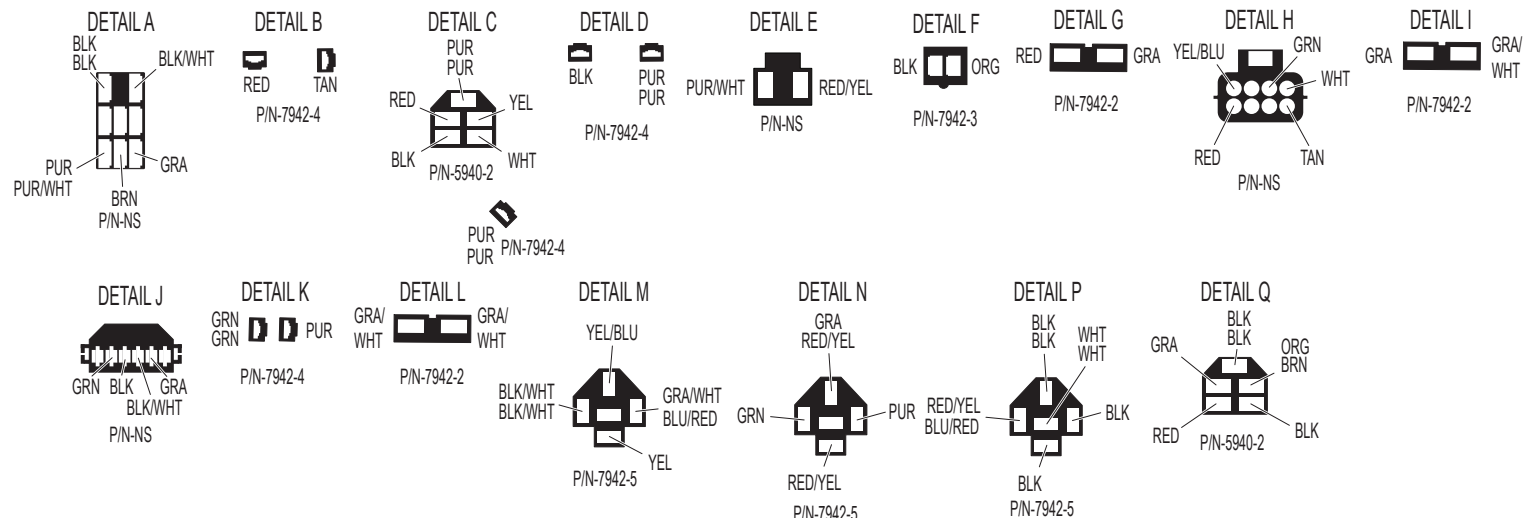
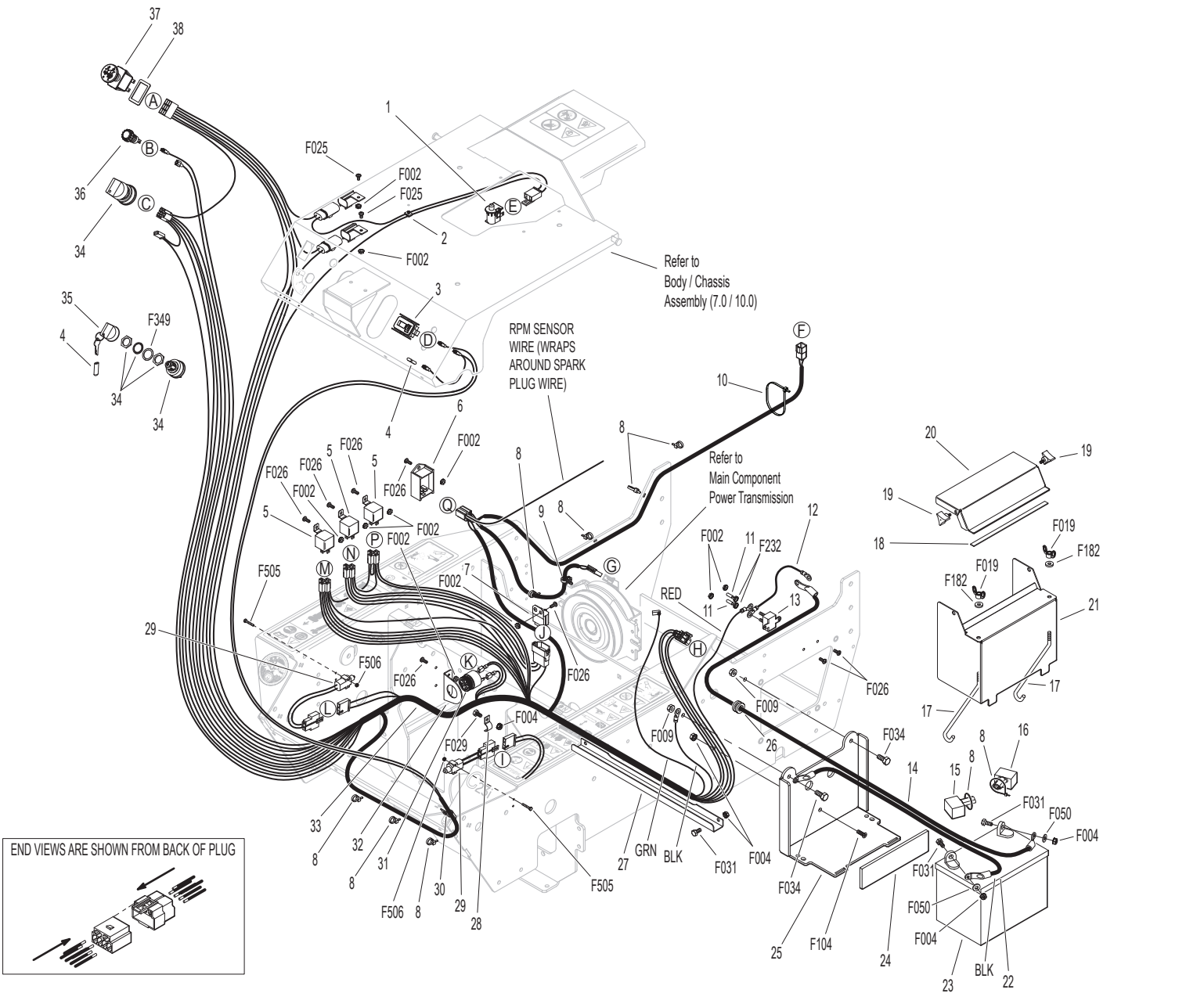


Model C23i Beginning S/N 191079
Use only genuine Walker® replacement parts.

ELECTRICAL ASSEMBLY

ITEM NO.	PART NO.	DESCRIPTION	NO. REQ'D	ITEM NO.	PART NO.	DESCRIPTION	NO. REQ'D
Electrical Assembly				Fasteners			
1	6104-11	Seat Switch, Comfort Seat (NO)	1	F002		10-24 Keps Nut	12
2	7834-2	Wire Saddle (2 Wires)	1	F004		1/4-20 Keps Nut	6
3	8990-1	Hourmeter (Global)	1	F009		5/16-18 Whiz Locknut	2
4	7854	Plastic Tip / Red	2	F019		1/4-20 ESNA Wing Nut	2
5	6941-9	Relay Switch 30/40 Amp	3	F025		10-24 x 3/8 PPHMS	2
6	4410-16	Soft Start Control	1	F026		10-24 x 1/2 PPHMS	10
7	7948-6	Time Delay Module	1	F029		1/4-20 x 1/2 Hex Bolt	1
8	5975-1	Cable Tie (18# x 3-3/4")	9	F031		1/4-20 x 5/8 Hex Bolt	4
9	7834-4	Wire Clamp .197-.354	1	F034		5/16-18 x 3/4 Hex Bolt	2
10	5975-3	Cable Tie (50# x 7")	1	F050		1/4 SAE Washer	2
11	8404-8	Plastic Cover, Red	2	F104		1/4-20 x 3/4 PFH Bolt	1
12	4940-11	Jumper Wire	1	F182		1/4 x 5/8 x 1/8 Washer	2
13	8941	Circuit Breaker (30 Amp) (Auto Reset/Sealed)	1	F232		10-32 Keps Nut	2
14	2940-2	Battery Cable (22")	1	F349		Washer .835 ID 1.122 OD, SS	1
15	5932	Battery Terminal Insul., Black (-)	1	F505		6-32 x 7/8 Hex Trim MS, SS	4
16	5933	Battery Terminal Insul., Red (+)	1	F506		6-32 Nylock Nut	4
17	5839	Hook Bolt	2	NOTE: Decals for this assembly are not shown here. Refer to TRACTOR DECALS , Page 2, for Decal listing and placement information.			
18	8790-1	Rubber Strip	1				
19	2703-5	Knob, 10-24 x 1/2	2				
20	4910-11	Cover Plate With Foam (Includes Item # 18)	1				
21	4910-10	Battery Hold Down Bracket	1				
22	4940-8	Starter Solenoid Cable	1				
23	7910-3	Battery (12V/350A CCA)	1				
24	5910-6	Battery Spacer Pad	1				
25	4910-9	Battery Mount	1				
26	4977	Grommet (1/2 x 13/16 x 3/16)	1				
27	6342-5	Wiring Channel	1				
28	5835-6	Clamp Half (5/8) .280 Hole	1				
29	5942-8	Safety Switch (NO), Delta Side Mount	2				
30	5835-1	Clamp Half (1/4)	1				
31	8536-2	Warning Horn Assembly	1				
32	8536-5	Warning Horn Bracket	1				
33	6940-27	Wire Harness Assembly	1				
34	8960-15	Ignition Switch (With Keys) (Includes Items # 4, 35 & F349)	1				
35	8960-3	Key Set W/Umbrella	1				
36	8996-9	Red Indicator Light Assembly	1				
37	4950	PTO Switch	1				
38	4950-11	PTO Switch Spacer	1				

ELECTRICAL ASSEMBLY

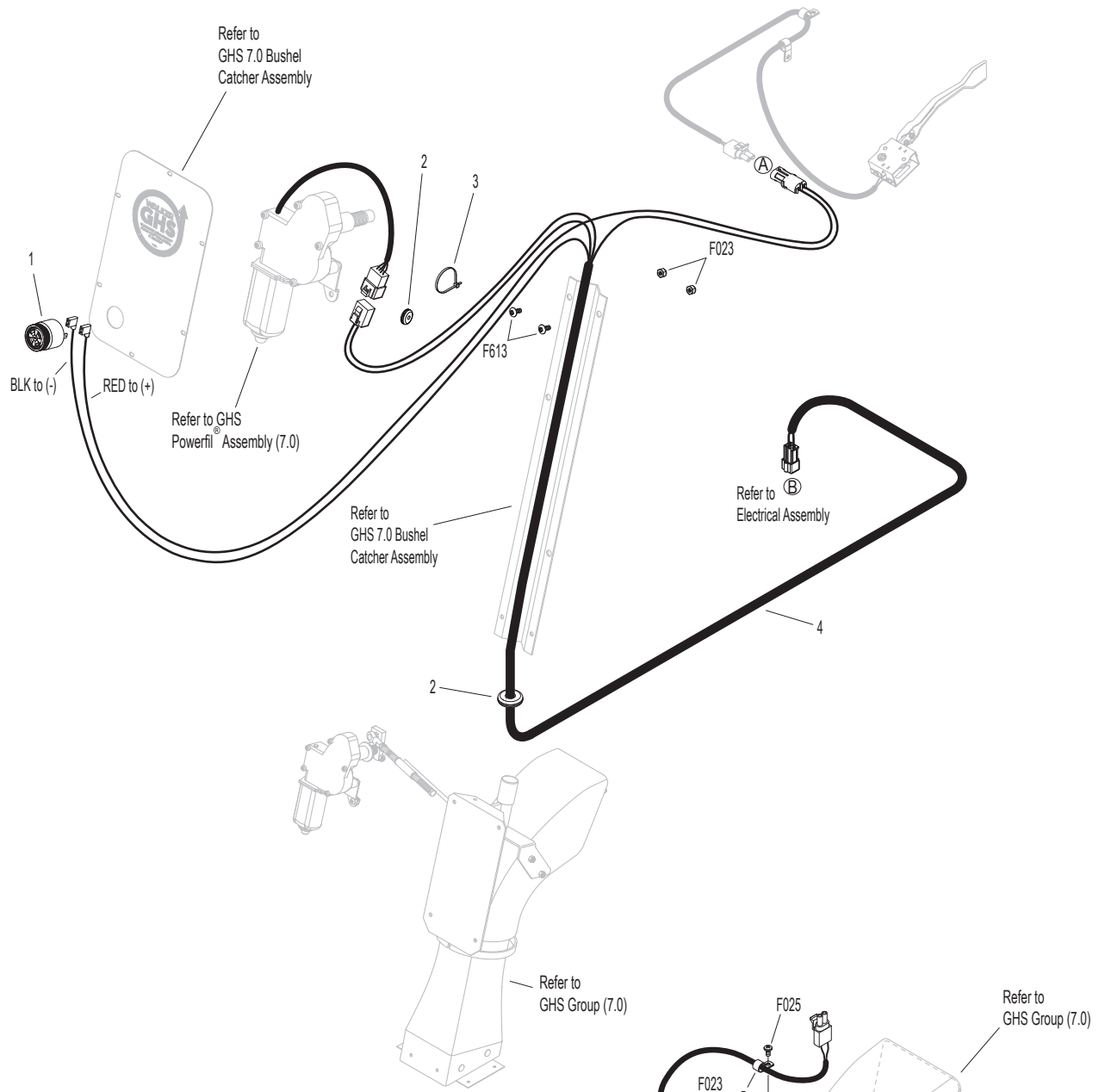


Model C23i Beginning S/N 191079
Use only genuine Walker® replacement parts.

ELECTRICAL ASSEMBLIES (GHS 7.0 BUSHEL COMPONENTS)

ITEM NO.	PART NO.	DESCRIPTION	NO. REQ'D	ITEM NO.	PART NO.	DESCRIPTION	NO. REQ'D
Horn & Harness Channel Assemblies				Fasteners			
1	5536-2	Horn, Full Signal	*	F002		10-24 Keps Nut	1
2	5976-2	Grommet (3/16 x 3/4)	2	F023		10-24 ESNA Nut	3
3	5975-1	Cable Tie (18# x 3-3/4")	1	F025		10-24 x 3/8 PPHMS	1
Harness & Grass-Pak® Switch Assemblies				F508		4-40 Keps Nut, SS	2
4	8950-4	Powerfil Wire Harness (7.0/10.0)	1	F612		10-24 x 5/8 Truss Head Torx	1
5	5833	Cable Clamp (1/4)	2	F613		10-24 x 1/2 Truss Head Torx	2
6	5594-7	Grass-Pak® Vane	1	F712		4-40 x 3/8 Hex Head, SS	2
7	5592-40	Grass-Pak® Switch Assembly	1	F713		Washer #4, SS	2
				*		Service Part Only	

ELECTRICAL ASSEMBLIES (GHS 7.0 BUSHEL COMPONENTS)



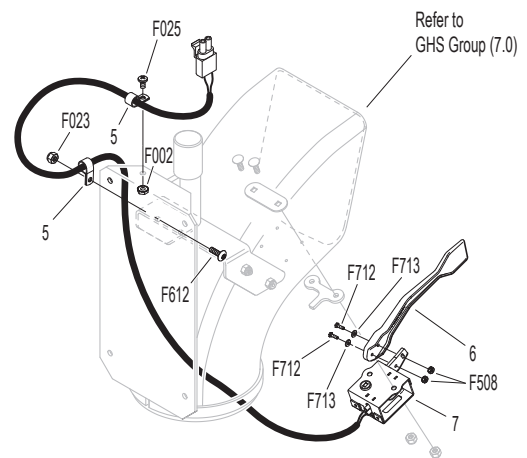
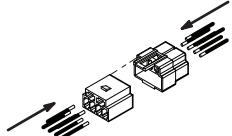
DETAIL A



DETAIL B



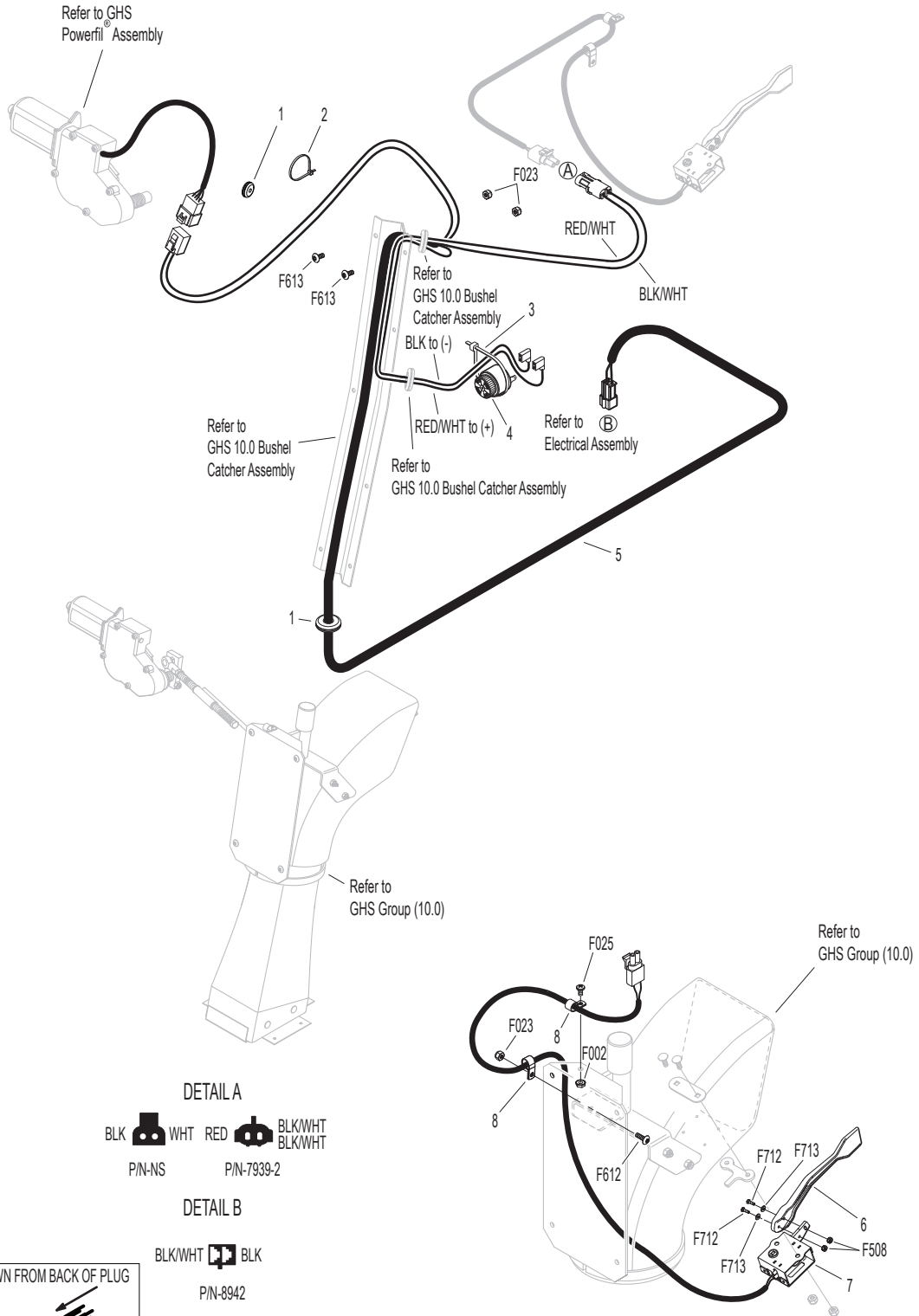
END VIEWS ARE SHOWN FROM BACK OF PLUG



ELECTRICAL ASSEMBLIES (GHS 10.0 BUSHEL COMPONENTS)

ITEM NO.	PART NO.	DESCRIPTION	NO. REQ'D	ITEM NO.	PART NO.	DESCRIPTION	NO. REQ'D
Horn & Harness Channel Assemblies				Fasteners			
1	5977-2	Grommet, Cut (1/8 x 3/8)	2	F002		10-24 Keps Nut	1
2	5975-1	Cable Tie (18# x 3-3/4")	1	F023		10-24 ESNA Nut	3
3	5975-3	Cable Tie (50# x 7")	1	F025		10-24 x 3/8 PPHMS	1
4	5536-2	Horn, Full Signal	*	F508		4-40 Keps Nut, SS	2
Harness & Grass-Pak® Switch Assemblies				F612		10-24 x 5/8 Truss Head Torx	1
5	8950-4	Powerfil® Wire Harness (7.0 / 10.0)	1	F613		10-24 x 1/2 Truss Head Torx	2
6	5594-7	Grass-Pak® Shaft	1	F712		4-40 x 3/8 Hex Head, SS	2
7	5592-40	Grass-Pak® Switch Assembly	1	F713		Washer #4, SS	2
8	5833	Cable Clamp (1/4)	2	* Service Part Only			

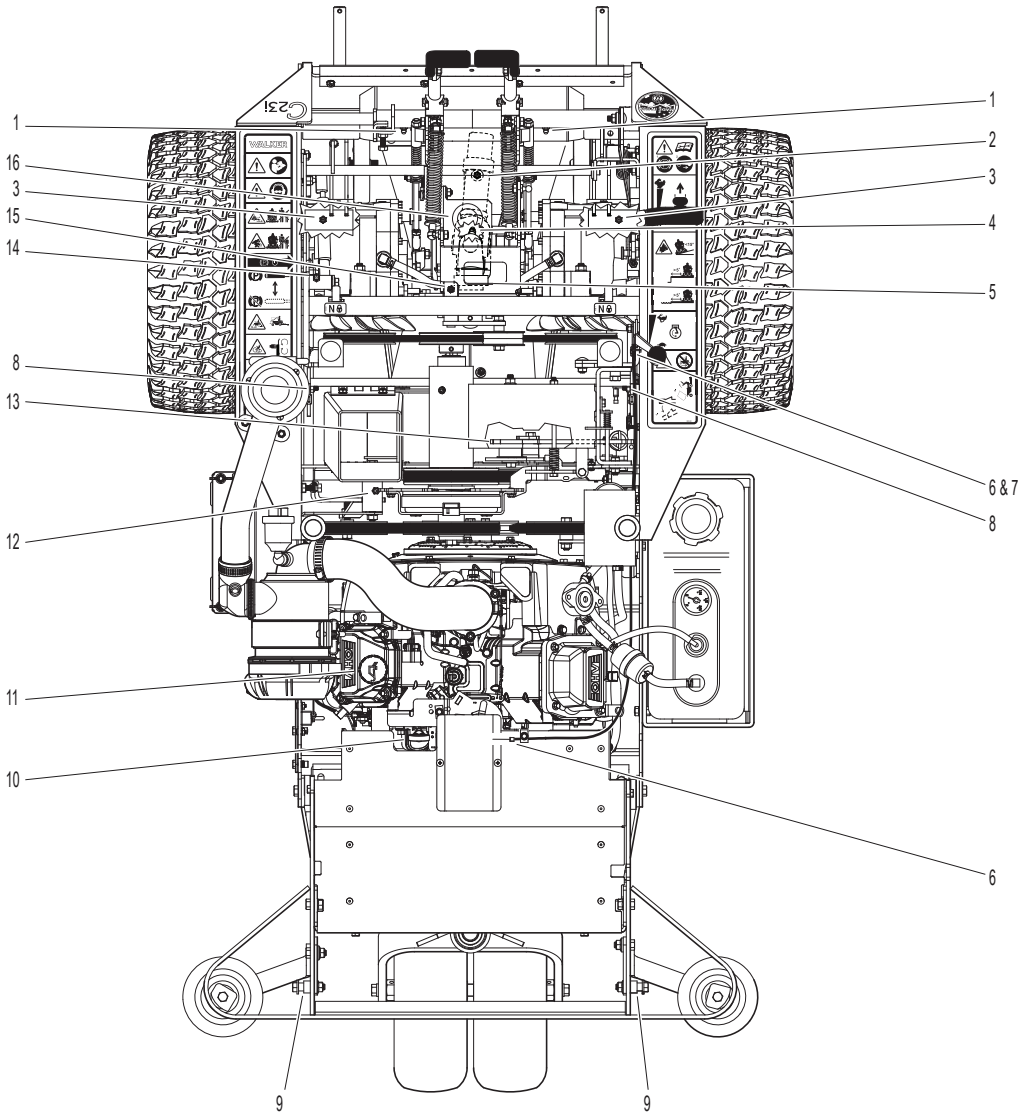
ELECTRICAL ASSEMBLIES (GHS 10.0 BUSHEL COMPONENTS)



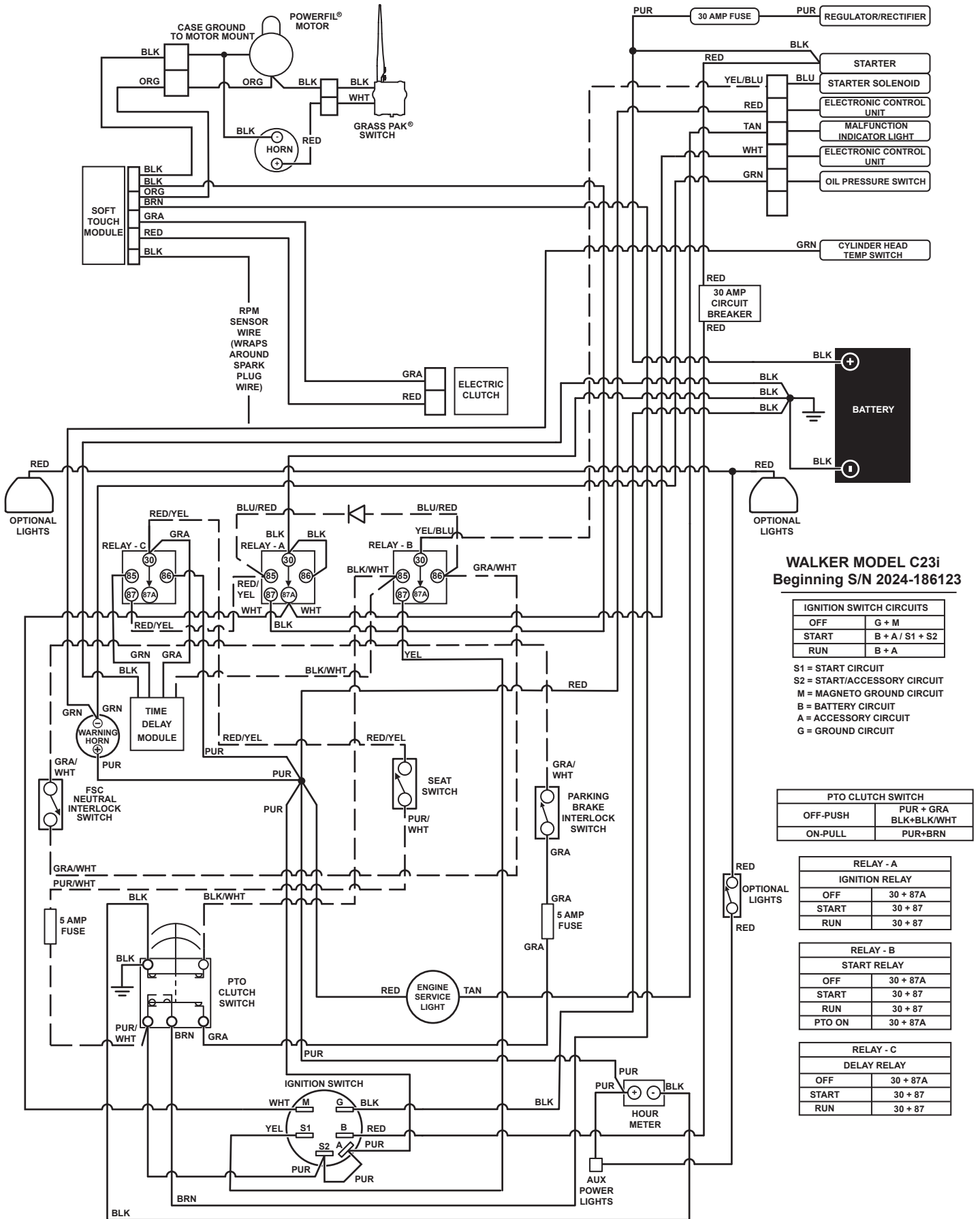
LUBRICATION POINTS

ITEM NO.	LOCATION	LUBRICATION TYPE	NO. PLACES	ITEM NO.	LOCATION	LUBRICATION TYPE	NO. PLACES
Lubrication Points				13	Jackshaft Tensioner Lever*** (Grease Contact Point)	Grease	1
1	Steering Lever Pivot	Grease	2	14	Parking Brake Lever Pivot	Grease	1
2	Deck-to-PTO Coupling (Grease Spline Slide Area)	Grease	1	15	Ground Drive Idler Pivot	Grease	1
3	Deck Support Arm Pivot	Grease	2	16	Transaxle Oil Reservoir	Oil/20W-50	1
4	Universal Joint Tube Assembly	Grease*	1	* Grease every 25 hours.			
5	Universal Joint Quick Connect Spline (Grease Slide Area)	Grease	1	** Refer to C23i Operator's Manual for procedure for checking and changing oil in Engine Crankcase.			
6	Throttle Control Cable Ends	Oil	2	*** Contact point located under jackshaft. Access with jackshaft in raised position.			
7	Throttle Control Pivot	Oil	1	NOTE: See Model C23i Operator's Manual (6000-48) for proper lubrication intervals.			
8	Seat Panel Latch Pivot	Oil	2				
9	Catcher Hinge Point	Oil	2				
10	Engine Dipstick	Oil**	1				
11	Engine Oil Fill	Oil**	1				
12	Engine Idler Pivot	Grease	1				

LUBRICATION POINTS



WIRING SCHEMATIC



WALKER MODEL C23i
Beginning S/N 2024-186123

IGNITION SWITCH CIRCUITS	
OFF	G + M
START	B + A / S1 + S2
RUN	B + A

S1 = START CIRCUIT
S2 = START/ACCESSORY CIRCUIT
M = MAGNETO GROUND CIRCUIT
B = BATTERY CIRCUIT
A = ACCESSORY CIRCUIT
G = GROUND CIRCUIT

PTO CLUTCH SWITCH	
OFF-PUSH	PUR + GRA BLK+BLK/WHT
ON-PULL	PUR+BRN

RELAY - A	
IGNITION RELAY	
OFF	30 + 87A
START	30 + 87
RUN	30 + 87

RELAY - B	
START RELAY	
OFF	30 + 87A
START	30 + 87
RUN	30 + 87
PTO ON	30 + 87A

RELAY - C	
DELAY RELAY	
OFF	30 + 87A
START	30 + 87
RUN	30 + 87

LIMITED WARRANTY FOR WALKER MODEL C23i RIDER MOWERS

1. WHAT THIS WARRANTY COVERS, AND FOR HOW LONG:

Walker Manufacturing company will, at its option, repair or replace, without charge, any part covered by this warranty which is found to be defective in material and/or workmanship within two (2) years* after date of sale to the original retail purchaser unless the product is used for rental purposes, in which case this warranty is limited to ninety (90) days. At Walker's request, customer will make the defective part available for inspection by Walker and/or return the defective part to Walker, transportation charges prepaid. All parts and components of the Walker Mower are covered by this warranty **except** the following components which are warranted separately by their respective manufacturers:

Kohler Engine

The available warranties covering these items are furnished with each mower. Walker does not assume any warranty obligation, liability or modification for these items, which are covered exclusively by the stated warranty of the respective manufacturers noted above.

The Fulbat battery comes with a one (1) year warranty from the date of sale to the original retail purchaser. Warranty claims for the battery are administered through Walker Manufacturing.

Hydro-Gear offers a two (2) year or 2000 hour (whichever comes first) warranty for the ZT-3100 Hydrostatic transaxle which covers full cost of replacement up to 1000 hours of use, and after 1000 hours warranty coverage is prorated against 2000 hours. This warranty is administered through Walker Manufacturing.

2. WHAT THIS WARRANTY DOES NOT COVER:

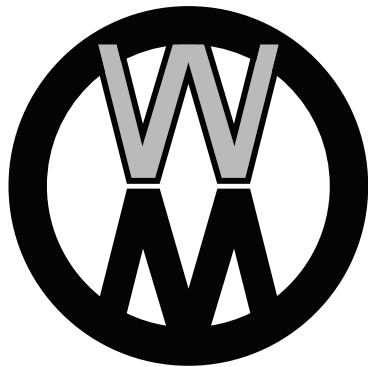
- A. This warranty does not cover defects caused by depreciation or damage caused by normal wear, accidents, improper maintenance, improper use or abuse of the product, alterations, or failure to follow the instructions contained in the Owner's Manual for operation and maintenance.
- B. The customer shall pay any charges for making service calls and/or for transporting the mower to and from the place where the inspection and/or warranty work is performed.

3. HOW TO OBTAIN SERVICE UNDER THIS WARRANTY:

Warranty service can be arranged by contacting the dealer where you purchased the mower or by contacting Walker Manufacturing Company, 5925 East Harmony Road, Ft. Collins, CO 80528. Proof of the date of purchase may be required to verify warranty coverage.

4. WARRANTY LIMITATION:

- A. **THERE IS NO OTHER EXPRESS WARRANTY. ANY WARRANTY THAT MAY BE IMPLIED FROM THIS PURCHASE INCLUDING MERCHANTABILITY AND FITNESS FOR A PARTICULAR PURPOSE IS HEREBY LIMITED TO THE DURATION OF THIS WARRANTY AND TO THE EXTENT PERMITTED BY LAW ANY AND ALL IMPLIED WARRANTIES ARE EXCLUDED.** Some states do not allow limitations on how long an implied warranty lasts, so the above limitations may not apply to you.
- B. **WALKER WILL NOT BE LIABLE FOR ANY INCIDENTAL, CONSEQUENTIAL, OR SPECIAL DAMAGES AND/OR EXPENSES IN CONNECTION WITH THE PURCHASE OR USE OF THE MOWER.** Some states do not allow the exclusion or limitation of incidental or consequential damages, so the above limitation(s) or exclusion(s) may not apply to you.
- C. Only the warranty expressed in this limited warranty shall apply and no dealer, distributor, or individual is authorized to amend, modify, or extend this warranty in any way. Accordingly, additional statements such as dealer advertising or presentations, whether oral or written, do not constitute warranties by Walker, and should not be relied upon.
- D. This warranty gives you specific legal rights, and you may also have other rights which vary from state to state.



WALKER

WALKER MFG. CO. • 5925 E. HARMONY ROAD, FORT COLLINS, CO 80528 • (970) 221-5614
FORM NO. 040225 PRINTED IN USA www.walker.com ©2025 WALKER MFG. CO