

# WALKER

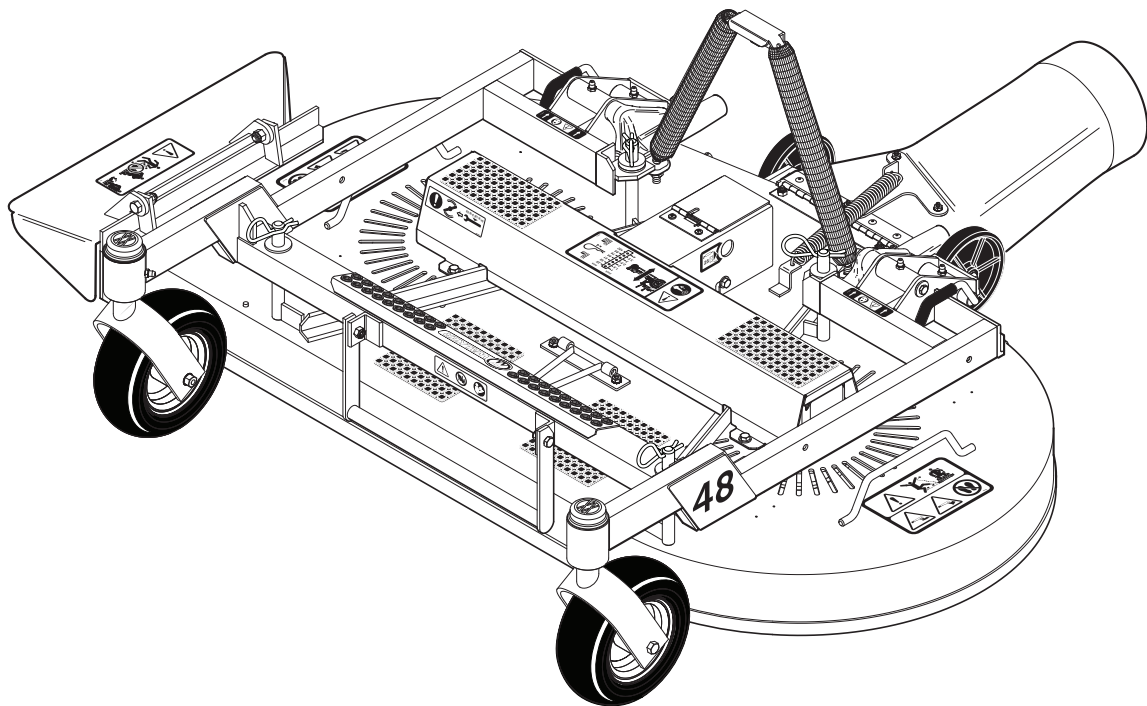
## Illustrated Parts Manual

Multi Deck and Carrier Frame Assemblies

DU42-2

DU42A-2

DU48-2



Effective Date: 12.04.24  
P/N 5000-89

# KEY TO ABBREVIATIONS USED IN THIS MANUAL

<i>Abbreviation</i>	<i>What it Represents</i>
° (Dimension)	Degrees (Angle)
" (Dimension)	inches
(-)	Negative (Polarity)
(+)	Positive (Polarity)
-1 (as deck style designation)	Standard (Aluminum) Gear Drive Deck
-2 (as deck style designation)	Heavy Duty (Cast Iron) Gear Drive Deck
-3 (as deck style designation)	Belt Drive Deck
AT	All-Terrain
CCW	Counter-clockwise
CW	Clockwise
D	Diameter
DC	Deck, Collection (number refers to size in inches)
DM	Deck, Mulching (number refers to size in inches)
DR	Deck, Rear Discharge (number refers to size in inches)
DS	Deck, Side Discharge (number refers to size in inches)
DU	Garlock (Bearing)
ESNA (Fastener)	Nylon Insert Locknut
FSC	Forward Speed Control
GA	Gauge
gal	gallon
GHS	Grass Handling System
GR (Fastener)	Grade
HD	Heavy Duty
HP	Horse Power
ID	Identification or Inside Diameter
L	Length
LH	Left Hand (orientated with operator on seat)
LP	Low Profile
mm (Dimension)	millimeters
MS (Fastener)	Machine Screw
NS (as part number)	Item is not sold by Walker Manufacturing
OD	Outside Diameter
oz	ounce
PFH (Fastener)	Phillips Flat Head
P/N	Part Number
PPH (Fastener)	Phillips Pan Head
PTH (Fastener)	Phillips Truss Head
PTO	Power Take-Off
QKS	Quick Slide
qt	quart
RH	Right Hand (orientated with operator on seat)
SAE (Fastener)	Society of Automotive Engineers
SBH (Fastener)	Socket Button Head (Bolt)
SD	Side Discharge
SFH (Fastener)	Slotted Flat Head
SHC (Fastener)	Socket Head Cap
SHL (Fastener)	Shoulder (Bolt)
SM (Fastener)	Sheet Metal (Screw)
S/N	Serial Number
SQH (Fastener)	Square Head
SS (Fastener)	Stainless Steel
ST (Fastener)	Self-Tapping (Screw)
V	Volts

**NOTE:** In some instances, combinations of abbreviations may be used (e.g. PPHMS - Phillips Pan Head Machine Screw).

# ILLUSTRATED PARTS LIST

<i>Section of Deck Covered</i>	<i>Page</i>	<i>Section of Deck Covered</i>	<i>Page</i>
<b>Decals &amp; Paint</b>		<b>Maintenance</b>	
Deck Decals / Touch-Up Paint.....	2	Lubrication Points .....	14
		Carrier Frame Deck Fork Installation .....	15
<b>Deck and Carrier Frame Assemblies</b>		Maintenance And Service Record Sheet .....	16
DU42-2 & DU42A-2 Complete		<b>Warranty</b>	
Carrier Frame Assembly .....	4	Limited Warranty.....	17
DU42-2 Deck Assembly .....	6		
DU42A-2 Deck Assembly.....	8		
DU48-2 Complete Carrier Frame Assembly.....	10		
DU48-2 Deck Assembly .....	12		

## DECK DECALS / TOUCH-UP PAINT

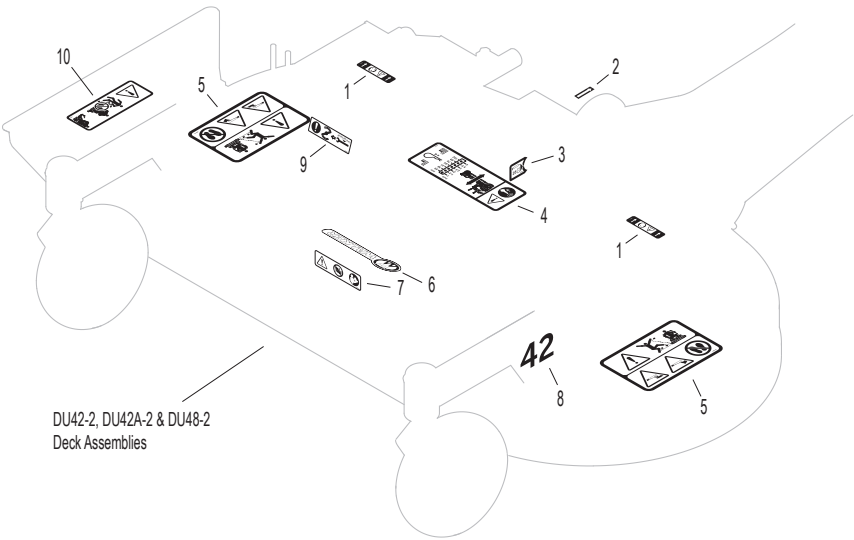
ITEM NO.	PART NO.	DESCRIPTION	LOCATION	NO. REQ'D
<b>DU42-2, DU42A-2 &amp; DU48-2 Deck Decals</b>				
1	8600-15	Caution, Tilt-Up Deck Lock	Carrier Frame	2
2	6875	PTO Alignment Arrow	Universal Joint Shaft Assembly	1
3	5846-1	Grease Fitting	PTO Shaft Guard	1
4	8600-7	Cutting Height Adjustment	Gearbox Cover	1
5	8600-28	Danger, Rotating Blades	Deck Housing (one on each end)	2
6	5809-2	Decal, Walker	Carrier Frame	1
7	8600-14	Danger, Tilt-Up	Carrier Frame, Front	1
8	8821-15	Decal (42")	Carrier Frame	1
	8821-16	Decal (48")	Carrier Frame	1
9	8600-9	Blade Mounting Torque	Gearbox Cover	1
10	5848-3	Danger, Side Discharge	Side Discharge Shield	1

### Touch-Up Paint

11	5866	Touch-Up Paint, Yellow (12 oz. Aerosol)
----	------	---

**NOTE:** All parts requiring decals are shipped with decals applied.

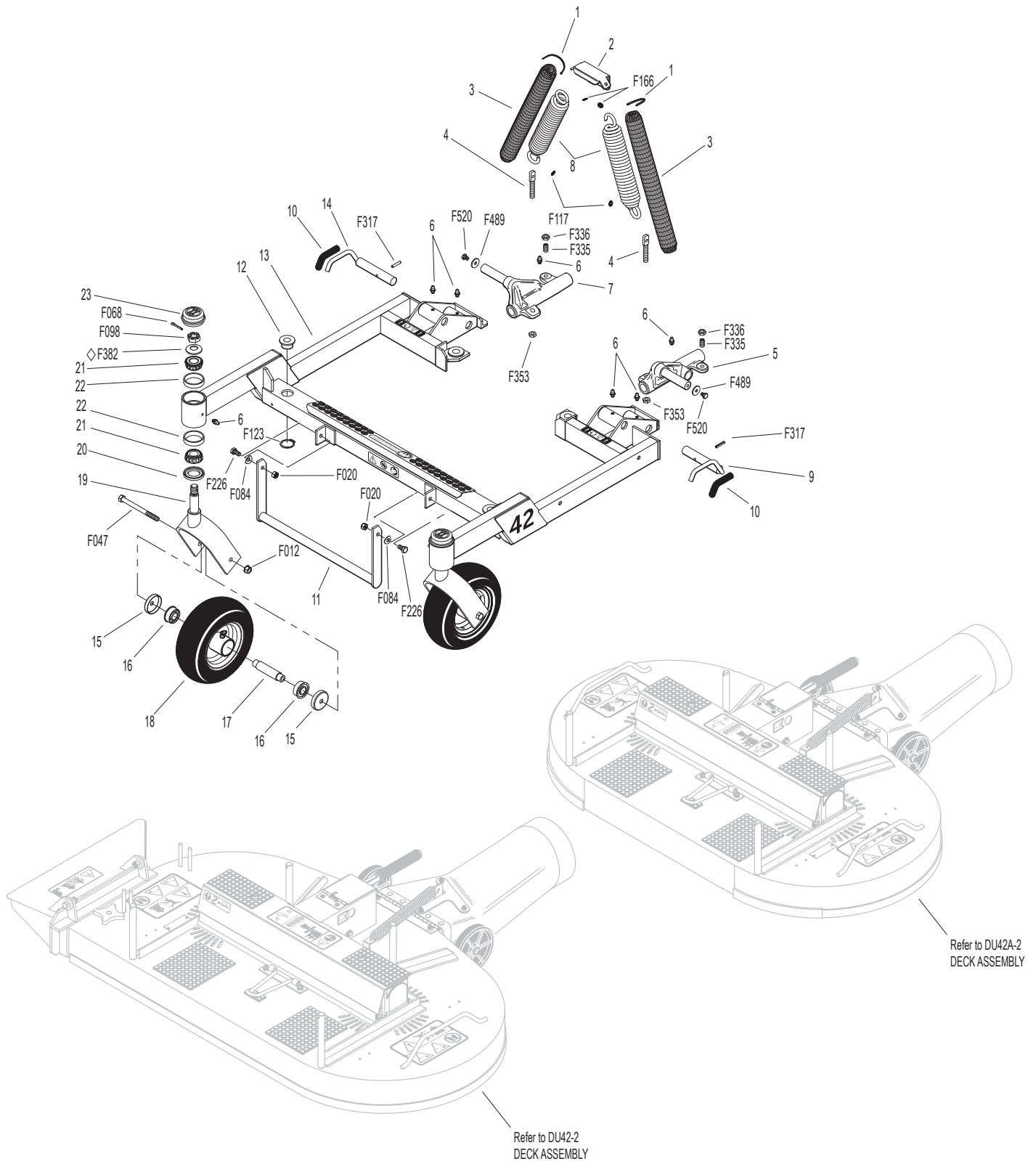
# DECK DECALS / TOUCH-UP PAINT



# DU42-2 & DU42A-2 COMPLETE CARRIER FRAME ASSEMBLY

ITEM NO.	PART NO.	DESCRIPTION	NO. REQ'D	ITEM NO.	PART NO.	DESCRIPTION	NO. REQ'D
<b>Spring and Pivot Mount Components</b>				<b>Fasteners</b>			
1	5975-3	Cable Tie (50# x 7")	4	F012	3/8-16 Keps Nut		2
2	5744-6	Spring Clip Bracket	1	F020	5/16-18 ESNA Nut		2
3	5743-1	Spring Cover	2	F047	3/8-16 x 4-1/2 Hex Bolt		2
4	5743-4	Eyebolt (3/8-16 x 2-3/4)	2	F068	1/8 x 1 Cotter Pin		2
5	8667-3	Pivot Mount, LH/Adj. (Includes Items # 6, F353, F489 & F520)	1	F084	5/16 Wave Spring Washer		2
6	5830	Grease Fitting	8	F098	5/8-18 Slotted Hex Nut		2
7	8667-4	Pivot Mount, RH/Adj. (Includes Items # 6, F353, F489 & F520)	1	F117	Retainer Ring		2
8	5743-8	Extension Spring, Red (1-1/2 x 7-3/4) (Includes Items # 1, F117 & F166)	2	F123	1" External Snap Ring		4
<b>Carrier Frame Components</b>				F166	Retainer Ring		2
9	8674-11	Lever, Deck Lock, LH	1	F226	5/16-18 x 7/8 Hex Bolt		2
10	7406-1	Handle Grip (Red)	2	F317	3/16 x 1 Split Spring Pin		2
11	8669	Lift Handle	1	F335	3/8-16 x 7/8 Set Screw, SS		2
12	5740-2	Deck Pin Bushing (5/8)	4	F336	3/8-16 Jam Nut		2
13	8663-2	42M Carrier Frame (Includes Item # 22)	1	F353	3/8-16 ESNA LP Nut		2
	8663-3	42M Carrier Frame W/Forks (Includes Items # 6, 19-23, F068, F098 & F382)	*	F382	Belleville Washer .650 x 1.36		2
14	8674-10	Lever, Deck Lock, RH	1	F489	Washer 1/4 x 7/8 x .090		2
<b>Caster Wheel Components</b>				F520	1/4-28 x 3/8 Hex Bolt		2
15	8769-11	Bearing Cup (3/8 ID)	4	* Service Part Only			
16	5714-11	Bearing	4				
17	5714-10	Axle Tube (3.417)	2				
18	5715-23	Caster Wheel & Tire/No-Flat (8 x 3.00-4) W/Cups (Includes Items # 15-17)	2				
19	5770-1	Caster Wheel Fork	2				
20	8768-1	Seal (1-3/4 x 1-1/8)	2				
21	8037	Bearing Cone (3/4 ID)	4				
22	8769-1	Bearing Cup (1-3/4 x 1-7/16)	4				
23	8769-10	Dust Cap, Deck Caster	2				

# DU42-2 & DU42A-2 COMPLETE CARRIER FRAME ASSEMBLY



◇ Refer to CARRIER FRAME DECK FORK INSTALLATION, Page 15.

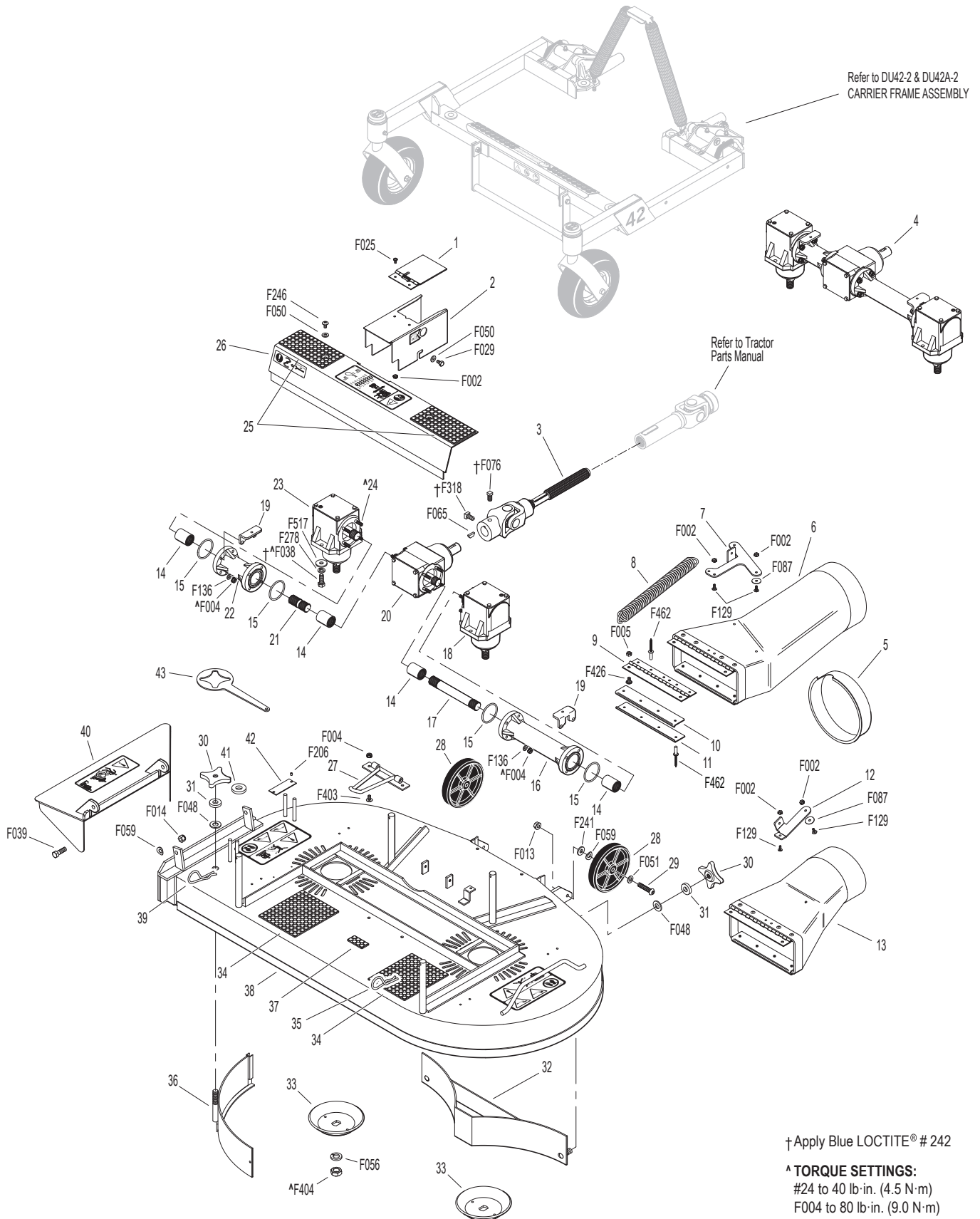
Refer to LUBRICATION POINTS, Page 14.

# DU42-2 DECK ASSEMBLY

ITEM NO.	PART NO.	DESCRIPTION	NO. REQ'D	ITEM NO.	PART NO.	DESCRIPTION	NO. REQ'D
<b>Gearbox and Drive Components</b>				35	7775-1	Hitch Pin, LH (Silver) #6	2
1	8618-1	Cover, PTO Shaft Guard	1	36	6708-4	Chute Baffle (1/4" Thick)	1
2	8618-12	PTO Shaft Guard Assembly (Includes Items # 1, F002 & F025)	1	37	8788-1	Rubber Mat (1 x 2)	1
3	5285-5	U-Joint Shaft Assembly (90 Degree) Spline, Keyed (Includes Items # F065, F076 & F318)	1	38	5701-12	DU42-2 Deck Housing (Includes Items # 34 & 37)	1
4	6711-4	Gearbox and Tube Assembly (Includes Items # 14-24, F004 & F136)	1	39	7775-2	Hitch Pin, RH (Gold) #6	2
5	5595-2	Intake Cover, GHS	**	40	6708-3	DU42-2 Discharge Shield	1
6	5794-2	Discharge Chute Assembly With Spring Mount (Includes Items # 7, 9-11, F002, F087, F129 & F462)	1	41	5727-1	Washer Shim (5/8 ID)	4
7	8678	Spring Mount, Chute	1	42	NS	Deck Serial Number Plate	1
8	8677	Extension Spring (1 x 6-1/16)	1	43	5703-16	Wrench	***
9	5726	Chute Hinge (2 x 8)	1	<b>Fasteners</b>			
10	5755-2	Chute Lip, Top	1	F002	10-24 Keps Nut		6
11	5755-3	Chute Lip, Bottom	1	F004	1/4-20 Keps Nut		18
12	8678-4	Spring Mount, Chute	1 <sup>Δ</sup>	F005	1/4-20 ESNA Nut		2
13	5794-3	Discharge Chute With Spring Mount (Includes Items # 9-12, F002, F087, F129 & F462)	1 <sup>Δ</sup>	F013	3/8-16 Whiz Locknut		2
14	6054	Spline Coupling	4	F014	3/8-16 ESNA Nut		2
15	5068-6	O-Ring (1-7/8 x 2)	4	F025	10-24 x 3/8 PPHMS		2
16	5063-2	Connector Tube (8.655)	1	F029	1/4-20 x 1/2 Hex Bolt		2
17	6733-3	Connecting Shaft (6-1/4)	1	F038	3/8-16 x 1 Hex Bolt		4
18	5053-13	HD Gearbox (1:1) CW-CW (Includes Item # 24)	1	F039	3/8-16 x 1-1/4 Hex Bolt		2
19	5704-1	Gearbox Cover Support	2	F048	1/2 SAE Washer		3
20	5051-5	HD Tee Gearbox (1:1) CW-CW & CCW (Includes Item # 24)	1	F050	1/4 SAE Washer		4
21	6733-1	Connecting Shaft (2")	1	F051	3/8 SAE Washer		2
22	5062-2	Connector Tube (4.405)	1	F056	5/8 Split Lock Washer		2
23	5052-13	HD Gearbox (1:1) CCW-CCW (Includes Item # 24)	1	F059	3/8 Wave Spring Washer		4
24	5589-1	1/4-20 x 1-1/2" Stud	16	F065	3/16 x 3/4 Woodruff Key (#606)		1
25	5747-11	Rubber Mat (3 x 6)	2	F076	3/8-16 x 5/8 SQH Set Screw		1
26	5785-5	42" Gearbox Cover (Includes Item # 25)	1	F087	#10 x 7/8 Fender Washer		2
<b>Deck Housing Components</b>				F129	10-24 x 1/2 PTHMS		4
27	8670	Tilt-Up Hook	1	F136	AN960C416L Washer		16
28	5162-12	Roller Wheel (5" Poly) (Includes Items # 29, F013 & F059)	2	F206	#2 x 3/16 Drive Pin		2
29	8490	Roller Wheel Axle Bolt	2	F241	.375 x .875 x .10 Washer		2
30	5703-1	Knob (1/2-13) (Includes Item # 31)	3	F246	1/4-20 x 1/2 PTHMS		2
31	5727	Washer Shim (1/2 ID)	3	F278	3/8 Split Lock Washer		4
32	6708-1	Rear Baffle	1	F318	3/8-16 x 3/4 SQH Set Screw		1
33	5706	Blade Hub & Trash Guard	2	F403	1/4-20 x 1/2 PTHMS, SS		2
34	8735-10	Rubber Mat (5 x 6)	2	F404	5/8-18 Jam Nut		2
				F426	1/4-20 x 1/2 Carriage Bolt		2
				F462	3/16 x .468 (+/- .010) Semi-Tube Rivet		8
				F517	Washer 3/8 x 1-1/8 x 1/8		4
				*	Service Part Only		
				**	Plugs Blower when GHS is not in use.		
				***	The wrench is used to assist the installation/removal of P/N 5703-1 (Knob).		
				Δ	Item used on Model S18 only		



# DU42-2 DECK ASSEMBLY



† Apply Blue LOCTITE® # 242

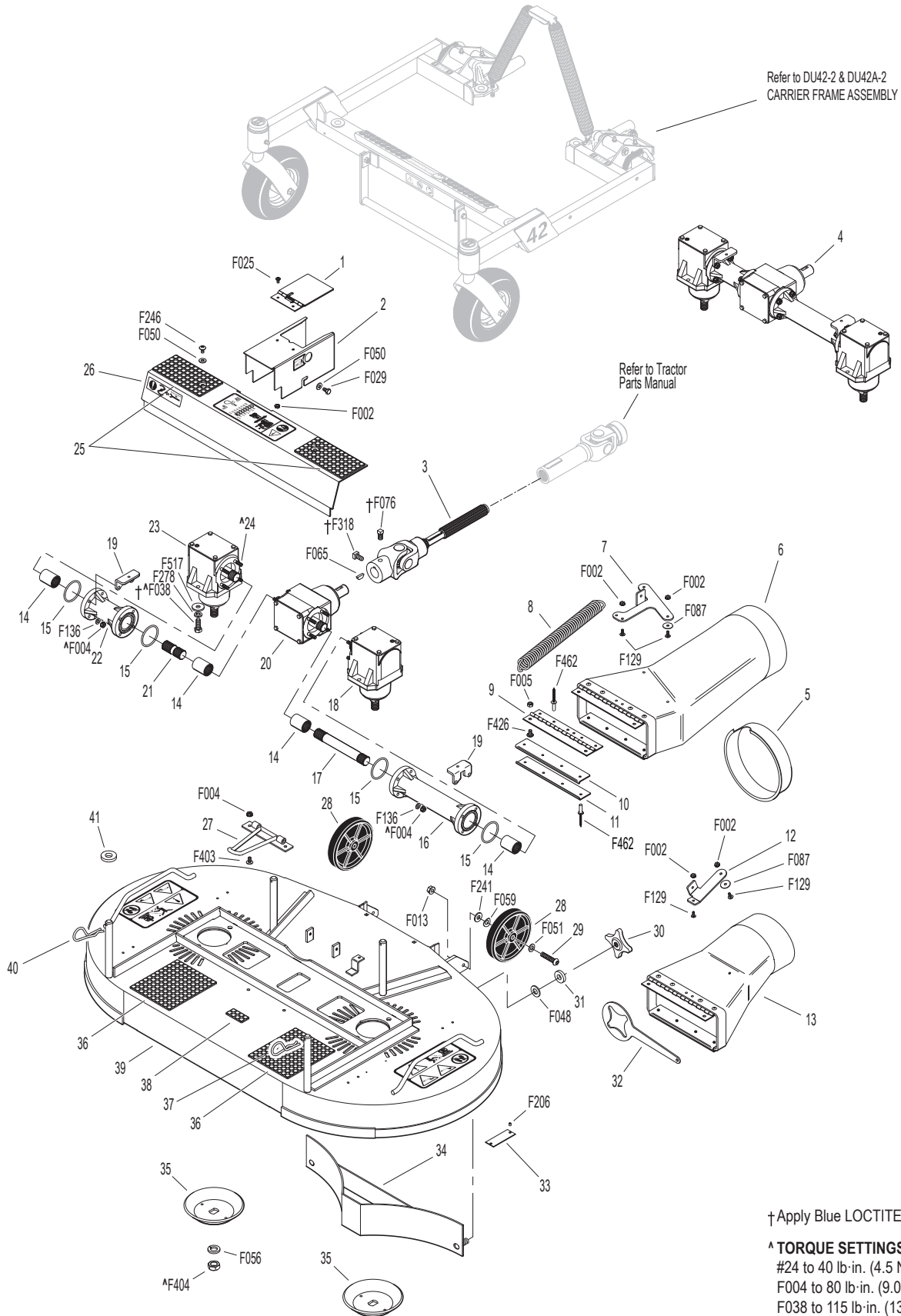
^ **TORQUE SETTINGS:**  
 #24 to 40 lb-in. (4.5 N·m)  
 F004 to 80 lb-in. (9.0 N·m)  
 F038 to 115 lb-in. (13.0 N·m)  
 F404 to 60 lb-ft (81.4 N·m)

Refer to LUBRICATION POINTS, Page 14.

# DU42A-2 DECK ASSEMBLY

ITEM NO.	PART NO.	DESCRIPTION	NO. REQ'D	ITEM NO.	PART NO.	DESCRIPTION	NO. REQ'D
<b>Gearbox and Drive Components</b>				33	NS	Deck Serial Number Plate	1
1	8618-1	Cover, PTO Shaft Guard	1	34	6708-1	Rear Baffle	1
2	8618-12	PTO Shaft Guard Assembly (Includes Items # 1, F002 & F025)	1	35	5706	Blade Hub & Trash Guard	2
3	5285-5	U-Joint Shaft Assembly (90 Degree) Spline, Keyed (Includes Items # F065, F076 & F318)	1	36	8735-10	Rubber Mat (5 x 6)	2
4	6711-4	Gearbox and Tube Assembly (Includes Items # 14-24, F004 & F136)	1	37	7775-1	Hitch Pin, LH (Silver) #6	2
5	5595-2	Intake Cover, GHS	**	38	8788-1	Rubber Mat (1 x 2)	1
6	5794-2	Discharge Chute Assembly With Spring Mount (Includes Items # 7, 9-11, F002, F087, F129 & F462)	1	39	5701-14	DU42A-2 Deck Housing (Includes Item # 36)	1
7	8678	Spring Mount, Chute	1	40	7775-2	Hitch Pin, RH (Gold) #6	2
8	8677	Extension Spring (1 x 6-1/16)	1	41	5727-1	Washer Shim (5/8 ID)	4
9	5726	Chute Hinge (2 x 8)	1	<b>Fasteners</b>			
10	5755-2	Chute Lip, Top	1	F002	10-24 Keps Nut		6
11	5755-3	Chute Lip, Bottom	1	F004	1/4-20 Keps Nut		18
12	8678-4	Spring Mount, Chute	1 <sup>Δ</sup>	F005	1/4-20 ESNA Nut		2
13	5794-3	Discharge Chute With Spring Mount (Includes Items # 9-12, F002, F087, F129 & F462)	1 <sup>Δ</sup>	F013	3/8-16 Whiz Locknut		2
14	6054	Spline Coupling	4	F025	10-24 x 3/8 PPHMS		2
15	5068-6	O-Ring (1-7/8 x 2)	4	F029	1/4-20 x 1/2 Hex Bolt		2
16	5063-2	Connector Tube (8.655)	1	F038	3/8-16 x 1 Hex Bolt		4
17	6733-3	Connecting Shaft (6-1/4)	1	F048	1/2 SAE Washer		2
18	5053-13	HD Gearbox (1:1) CW-CW (Includes Item # 24)	1	F050	1/4 SAE Washer		4
19	5704-1	Gearbox Cover Support	2	F051	3/8 SAE Washer		2
20	5051-5	HD Tee Gearbox (1:1) CW-CW & CCW (Includes Item # 24)	1	F056	5/8 Split Lock Washer		2
21	6733-1	Connecting Shaft (2")	1	F059	3/8 Wave Spring Washer		2
22	5062-2	Connector Tube (4.405)	1	F065	3/16 x 3/4 Woodruff Key (#606)		1
23	5052-13	HD Gearbox (1:1) CCW-CCW (Includes Item # 24)	1	F076	3/8-16 x 5/8 SQH Set Screw		1
24	5589-1	1/4-20 x 1-1/2" Stud	16	F087	#10 x 7/8 Fender Washer		2
25	5747-11	Rubber Mat (3 x 6)	2	F129	10-24 x 1/2 PTHMS		4
26	5785-5	42" Gearbox Cover (Includes Item # 25)	1	F136	AN960C416L Washer		16
<b>Deck Housing Components</b>				F206	#2 x 3/16 Drive Pin		2
27	8670	Tilt-Up Hook	1	F241	.375 x .875 x .10 Washer		2
28	5162-12	Roller Wheel (5" Poly) (Includes Items # 29, F013 & F059)	2	F246	1/4-20 x 1/2 PTHMS		2
29	8490	Roller Wheel Axle Bolt	2	F278	3/8 Split Lock Washer		4
30	5703-1	Knob (1/2-13) (Includes Item # 31)	2	F318	3/8-16 x 3/4 SQH Set Screw		1
31	5727	Washer Shim (1/2 ID)	2	F403	1/4-20 x 1/2 PTHMS, SS		2
32	5703-16	Wrench	***	F404	5/8-18 Jam Nut		2
				F426	1/4-20 x 1/2 Carriage Bolt		2
				F462	3/16 x .468 (+/- .010) Semi-Tube Rivet		8
				F517	Washer 3/8 x 1-1/8 x 1/8		4
				* Service Part Only			
				** Plugs Blower when GHS is not in use.			
				*** The wrench is used to assist the installation/removal of P/N 5703-1 (Knob).			
				Δ Item used on Model S18 only			

# DU42A-2 DECK ASSEMBLY



† Apply Blue LOCTITE® # 242

**^ TORQUE SETTINGS:**  
 #24 to 40 lb-in. (4.5 N·m)  
 F004 to 80 lb-in. (9.0 N·m)  
 F038 to 115 lb-in. (13.0 N·m)  
 F404 to 60 lb-ft (81.4 N·m)

Refer to LUBRICATION POINTS, Page 14.

# DU48-2 COMPLETE CARRIER FRAME ASSEMBLY

ITEM NO.	PART NO.	DESCRIPTION	NO. REQ'D	ITEM NO.	PART NO.	DESCRIPTION	NO. REQ'D
<b>Spring and Pivot Mount Components</b>				<b>Fasteners</b>			
1	5975-3	Cable Tie (50# x 7")	4	F012	3/8-16 Keps Nut		2
2	5744-6	Spring Clip Bracket	1	F020	5/16-18 ESNA Nut		2
3	5743-1	Spring Cover	2	F047	3/8-16 x 4-1/2 Hex Bolt		2
4	5743-4	Eyebolt (3/8-16 x 2-3/4)	2	F068	1/8 x 1 Cotter Pin		2
5	8667-3	Pivot Mount, LH/Adj. (Includes Items # 6, F353, F489 & F520)	1	F084	5/16 Wave Spring Washer		2
6	5830	Grease Fitting	8	F098	5/8-18 Slotted Hex Nut		2
7	8667-4	Pivot Mount, RH/Adj. (Includes Items # 6, F353, F489 & F520)	1	F117	Retainer Ring		2
8	5743-6	Extension Spring, Green (1-1/2 x 7-3/4) (Includes Items # 1, F117 & F166)	2	F123	1" External Snap Ring		4
<b>Carrier Frame Components</b>				F166	Retainer Ring		2
9	8674-11	Lever, Deck Lock, LH	1	F226	5/16-18 x 7/8 Hex Bolt		2
10	7406-1	Handle Grip (Red)	2	F317	3/16 x 1 Split Spring Pin		2
11	8669	Lift Handle	1	F335	3/8-16 x 7/8 Set Screw, SS		2
12	5740-2	Deck Pin Bushing (5/8)	4	F336	3/8-16 Jam Nut		2
13	8661-8	DU48-2 Carrier Frame (Includes Item # 22)	1	F353	3/8-16 ESNA LP Nut		2
	8661-9	DU48-2 Carrier Frame W/Forks (Includes Items # 6, 19-23, F068, F098 & F382)	*	F382	Belleville Washer .650 x 1.36		2
14	8674-10	Lever, Deck Lock, RH	1	F489	Washer 1/4 x 7/8 x .090		2
<b>Caster Wheel Components</b>				F520	1/4-28 x 3/8 Hex Bolt		2
15	8769-11	Bearing Cup (3/8 ID)	4	* Service Part Only			
16	5714-11	Bearing	4				
17	5714-10	Axle Tube (3.417)	2				
18	5715-23	Caster Wheel & Tire/No-Flat (8 x 3.00-4) W/Cups (Includes Items # 15-17)	2				
19	5770-1	Caster Wheel Fork	2				
20	8768-1	Seal (1-3/4 x 1-1/8)	2				
21	8037	Bearing Cone (3/4 ID)	4				
22	8769-1	Bearing Cup (1-3/4 x 1-7/16)	4				
23	8769-10	Dust Cap, Deck Caster	2				

This diagram illustrates the assembly of a vehicle chassis, showing the main frame, suspension components, wheels, and various fasteners. The parts are numbered 1 through 23, and specific fasteners are labeled with codes like F068, F098, F382, F123, F020, F012, F084, F226, F047, F166, F117, F336, F335, F353, F520, F489, F317, and F020. The chassis is shown in a perspective view, with the front wheel and suspension assembly (including a shock absorber and coil spring) and the rear wheel and suspension assembly (including a shock absorber and coil spring) clearly visible. The main frame is a rectangular structure with a central cross-member. The front suspension assembly includes a control arm, a shock absorber, and a coil spring. The rear suspension assembly includes a control arm, a shock absorber, and a coil spring. The wheels are shown with tires and rims. The diagram is a technical drawing with clear lines and labels, typical of a service manual.



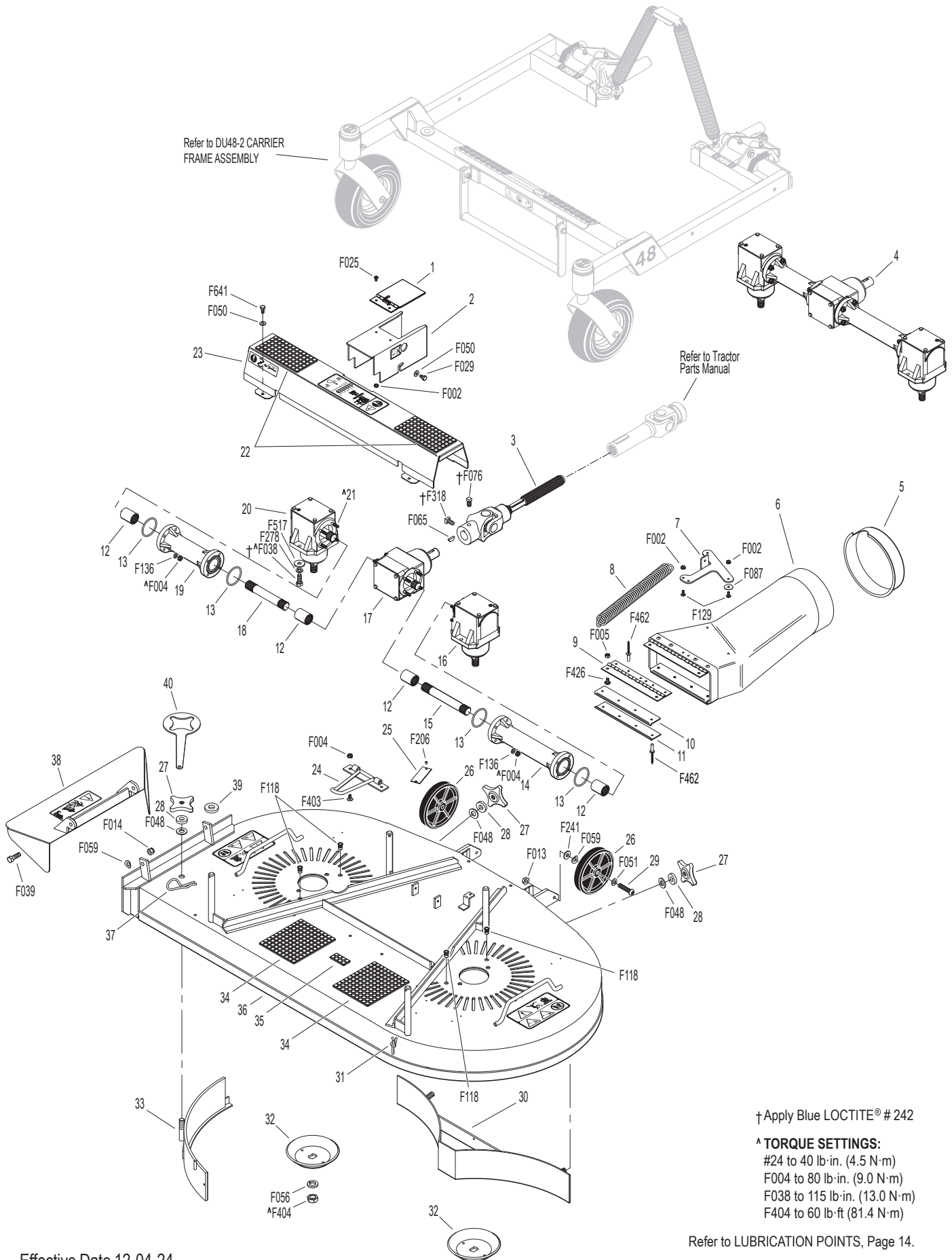
Refer to LUBRICATION POINTS, Page 14.

# DU48-2 DECK ASSEMBLY

ITEM NO.	PART NO.	DESCRIPTION	NO. REQ'D	ITEM NO.	PART NO.	DESCRIPTION	NO. REQ'D
<b>Gearbox and Drive Components</b>				34	8735-10	Rubber Mat (5 x 6)	2
1	8618-1	Cover, PTO Shaft Guard	1	35	8788-1	Rubber Mat (1 x 2)	1
2	8618-10	PTO Shaft Guard Assembly (Includes Items # 1, F002 & F025)	1	36	7702-26	DU48-2 Deck Housing (Includes Items # 34 & 35)	1
3	7285-5	U-Joint Shaft Assembly, Spline, Keyed (Includes Items # F065, F076 & F318)	1	37	7775-2	Hitch Pin, RH (Gold) #6	2
4	6711-13	HD Gearbox and Tube Assembly (Includes Items # 12-21, F004 & F136)	1	38	6708-7	DU48-2 Discharge Shield	1
5	5595-2	Intake Cover	**	39	5727-1	Washer Shim (5/8 ID)	4
6	5794-1	Discharge Chute Assembly With Spring Mount (Includes Items # 7, 9-11, F002, F087, F129 & F462)	1	40	5703-16	Wrench	***
7	8678	Spring Mount, Chute	1	<b>Fasteners</b>			
8	8677	Extension Spring (1 x 6-1/16)	1	F002	10-24 Keps Nut		6
9	5726	Chute Hinge (2 x 8)	1	F004	1/4-20 Keps Nut		18
10	5755-2	Chute Lip, Top	1	F005	1/4-20 ESNA Nut		2
11	5755-3	Chute Lip, Bottom	1	F013	3/8-16 Whiz Locknut		2
12	6054	Spline Coupling	4	F014	3/8-16 ESNA Nut		2
13	5068-6	O-Ring (1-7/8 x 2)	4	F025	10-24 x 3/8 PPHMS		2
14	5066-2	Connector Tube (9.343)	1	F029	1/4-20 x 1/2 Hex Bolt		2
15	6733-6	Connecting Shaft (7")	1	F038	3/8-16 x 1 Hex Bolt		4
16	5053-13	HD Gearbox (1:1) CW-CW (Includes Item # 21)	1	F039	3/8-16 x 1-1/4 Hex Bolt		2
17	5051-5	HD Tee Gearbox (1:1) CW-CW & CCW (Includes Item # 21)	1	F048	1/2 SAE Washer		3
18	6733-2	Connecting Shaft (4-1/8)	1	F050	1/4 SAE Washer		6
19	5061-2	Connector Tube (6.718)	1	F051	3/8 SAE Washer		2
20	5052-13	HD Gearbox (1:1) CCW-CCW (Includes Item # 21)	1	F056	5/8 Split Lock Washer		2
21	5589-1	1/4-20 x 1-1/2" Stud	16	F059	3/8 Wave Spring Washer		4
22	5747-10	Rubber Mat, No-Hole (3 x 6)	2	F065	3/16 x 3/4 Woodruff Key (#606)		1
23	7785-6	48" Gearbox Cover (Includes Item # 22)	1	F076	3/8-16 x 5/8 SQH Set Screw		1
<b>Deck Housing Components</b>				F087	#10 x 7/8 Fender Washer		2
24	8670	Tilt-Up Hook	1	F118	1/4-20 Knurled Insert		4
25	NS	Deck Serial Number Plate	1	F129	10-24 x 1/2 PTHMS		4
26	5162-12	Roller Wheel (5" Poly) (Includes Items # 29, F013 & F059)	2	F136	AN960C416L Washer		16
27	5703-1	Knob (1/2-13) (Includes Item # 28)	3	F206	#2 x 3/16 Drive Pin		2
28	5727	Washer Shim (1/2 ID)	3	F241	.375 x .875 x .10 Washer		2
29	8490	Roller Wheel Axle Bolt	2	F278	3/8 Split Lock Washer		4
30	6708-6	Rear Baffle	1	F318	3/8-16 x 3/4 SQH Set Screw		1
31	7775-1	Hitch Pin, LH (Silver) #6	2	F403	1/4-20 x 1/2 PTHMS, SS		2
32	5706	Blade Hub & Trash Guard	2	F404	5/8-18 Jam Nut		2
33	6708-5	Chute Baffle (1/4" Thick)	1	F426	1/4-20 x 1/2 Carriage Bolt		2
				F462	3/16 x .468 (+/- .010) Semi-Tube Rivet		8
				F517	Washer 3/8 x 1-1/8 x 1/8		4
				F641	1/4-20 x 5/8 Hex Bolt, SS		4
				* Service Part Only			
				** Plugs Blower when GHS is not in use.			
				*** The wrench is used to assist the installation/removal of P/N 5703-1 (Knob).			



# DU48-2 DECK ASSEMBLY



# LUBRICATION POINTS

ITEM NO.	LOCATION	LUBRICATION TYPE	NO. PLACES
----------	----------	------------------	------------

## DU42-2, DU42A-2 & DU48-2 Assemblies

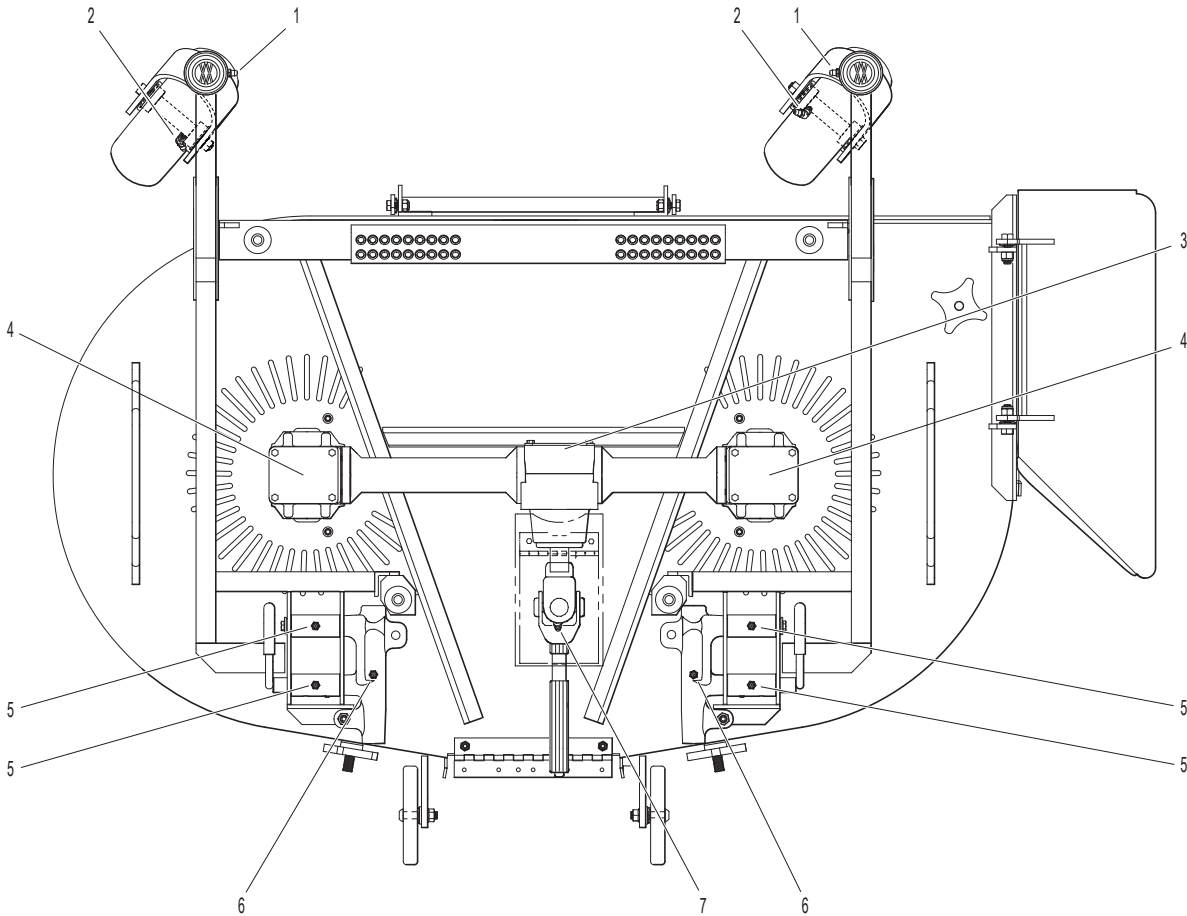
1	Deck Caster Wheel Fork Pivot	Grease	2
2	Deck Caster Wheel Bearing	Grease	2
3	Tee Gearbox, Deck	Oil*	1
4	Blade Drive Gearbox	Oil*	2
5	Pivot Assembly, Tilt-Up Deck	Grease	4
6	Deck Support Arm Socket	Grease	2
7	Universal Joint Shaft Assembly	Grease**	1

ITEM NO.	LOCATION	LUBRICATION TYPE	NO. PLACES
----------	----------	------------------	------------

\* Gearboxes are permanently lubricated and sealed requiring no scheduled lubrication. Oil level should be checked only when an oil leak is noted.

\*\* Grease every 25 hours.

**NOTE:** Exact location of some Lubrication Points may vary slightly from those shown in the illustration. Deck shown in the illustration is for reference only; for further information on location of parts not shown here, refer to the parts listings for individual Carrier Frames and Deck Assemblies.





# CARRIER FRAME DECK FORK INSTALLATION

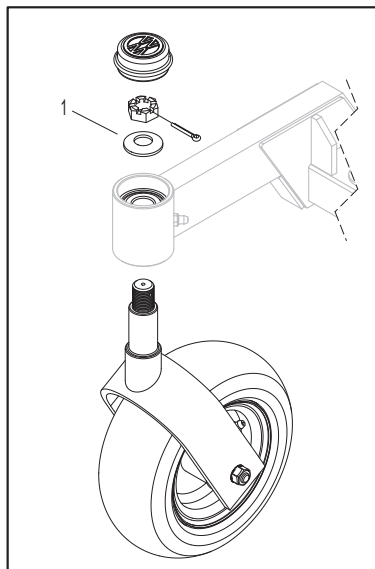
ITEM NO.	DESCRIPTION	ITEM NO.	DESCRIPTION
-------------	-------------	-------------	-------------

## Carrier Frame Deck Arm Assembly

- 1 Installing the Deck Fork with a Belleville Washer:
  - a. Install the fork up into the bearing housing through the lower and upper tapered roller bearings. Rotate the fork as the seal is engaging onto the shaft to prevent the seal lip from rolling.
  - b. Place a Belleville washer onto the fork shaft with the cupped side of the washer down against the bearing, and thread the slotted hex nut finger-tight onto the shaft.
  - c. Using a wrench or socket, tighten the slotted hex nut by hand only until the Belleville washer is fully compressed, which is felt as a distinct increase in the amount of force required to turn the nut.
  - d. Back the nut off one to two notches until the cotter pin hole is visible, and install the cotter pin to lock the nut in place.

**NOTE:** The tension of the compressed Belleville washer provides the correct amount of bearing pre-load and will remain consistent with use. Do not over-tighten the nut, which will bind the caster pivot and cause unnecessary turning friction.

Carrier Frame Deck Arm Assembly



## MAINTENANCE AND SERVICE RECORD SHEET

[illegible]

## **LIMITED WARRANTY FOR WALKER COMMERCIAL RIDER MOWER**

### **1. WHAT THIS WARRANTY COVERS, AND FOR HOW LONG:**

Walker Manufacturing company will, at its option, repair or replace, without charge, any part covered by this warranty which is found to be defective in material and/or workmanship within two (2) years after the date of sale to the original retail purchaser unless the product is used for rental purposes, in which case this warranty is limited to ninety (90) days. At Walker's request, customer will make the defective part available for inspection by Walker and/or return the defective part to Walker, transportation charges prepaid. All parts and components of the Walker Mower are covered by this warranty.

### **2. WHAT THIS WARRANTY DOES NOT COVER:**

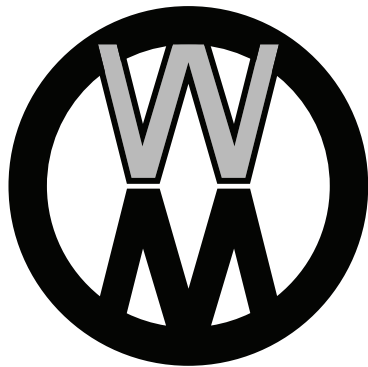
- A. This warranty does not cover defects caused by depreciation or damage caused by normal wear, accidents, improper maintenance, improper use or abuse of the product, alterations, or failure to follow the instructions contained in the Operator's Manual for operation and maintenance.
- B. The customer shall pay any charges for making service calls and/or for transporting the mower to and from the place where the inspection and/or warranty work is performed.

### **3. HOW TO OBTAIN SERVICE UNDER THIS WARRANTY:**

Warranty service can be arranged by contacting the dealer where you purchased the mower or by contacting Walker Manufacturing Company, 5925 East Harmony Road, Ft. Collins, CO 80528. Proof of the date of purchase may be required to verify warranty coverage.

### **4. WARRANTY LIMITATION:**

- A. **THERE IS NO OTHER EXPRESS WARRANTY. ANY WARRANTY THAT MAY BE IMPLIED FROM THIS PURCHASE INCLUDING MERCHANTABILITY AND FITNESS FOR A PARTICULAR PURPOSE IS HEREBY LIMITED TO THE DURATION OF THIS WARRANTY AND TO THE EXTENT PERMITTED BY LAW ANY AND ALL IMPLIED WARRANTIES ARE EXCLUDED.** Some states do not allow limitations on how long an implied warranty lasts, so the above limitations may not apply to you.
- B. **WALKER WILL NOT BE LIABLE FOR ANY INCIDENTAL, CONSEQUENTIAL, OR SPECIAL DAMAGES AND/OR EXPENSES IN CONNECTION WITH THE PURCHASE OR USE OF THE MOWER.** Some states do not allow the exclusion or limitation of incidental or consequential damages, so the above limitation(s) or exclusion(s) may not apply to you.
- C. Only the warranty expressed in this limited warranty shall apply and no dealer, distributor, or individual is authorized to amend, modify, or extend this warranty in any way. Accordingly, additional statements such as dealer advertising or presentations, whether oral or written, do not constitute warranties by Walker, and should not be relied upon.
- D. This warranty gives you specific legal rights, and you may also have other rights which vary from state to state.



**WALKER**

**WALKER MFG. CO. • 5925 E. HARMONY ROAD, FORT COLLINS, CO 80528 • (970) 221-5614**  
**FORM NO. 121624      PRINTED IN USA      [www.walker.com](http://www.walker.com)      ©2024 WALKER MFG. CO**